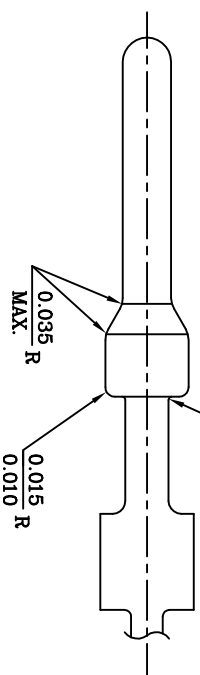
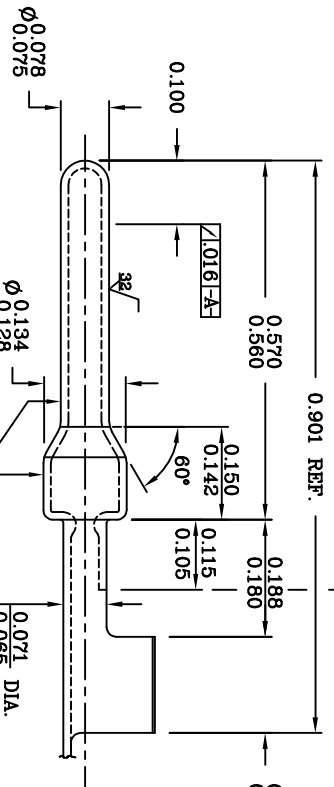
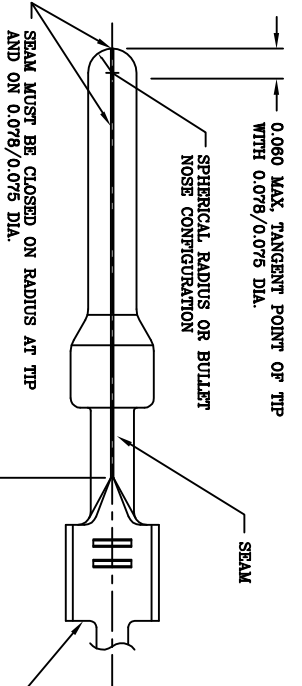


The Customer is the primary responsibility of the manufacturer. The manufacturer shall be responsible for the design, development, and production of the product. The manufacturer shall be responsible for the quality control of the product. The manufacturer shall be responsible for the delivery of the product. The manufacturer shall be responsible for the maintenance of the product. The manufacturer shall be responsible for the repair of the product. The manufacturer shall be responsible for the replacement of the product. The manufacturer shall be responsible for the disposal of the product.

REVISIONS				
REV.	ZONE	DESCRIPTION	DATE	APPROVED
U	ECH#HK1025	REDRAW AND REVISE, ADD NOTE 11 AND 12, CHANGE DIAMETER 0.077/0.075 TO 0.078/0.075, 4C	8/16/95	Y.M.LEE



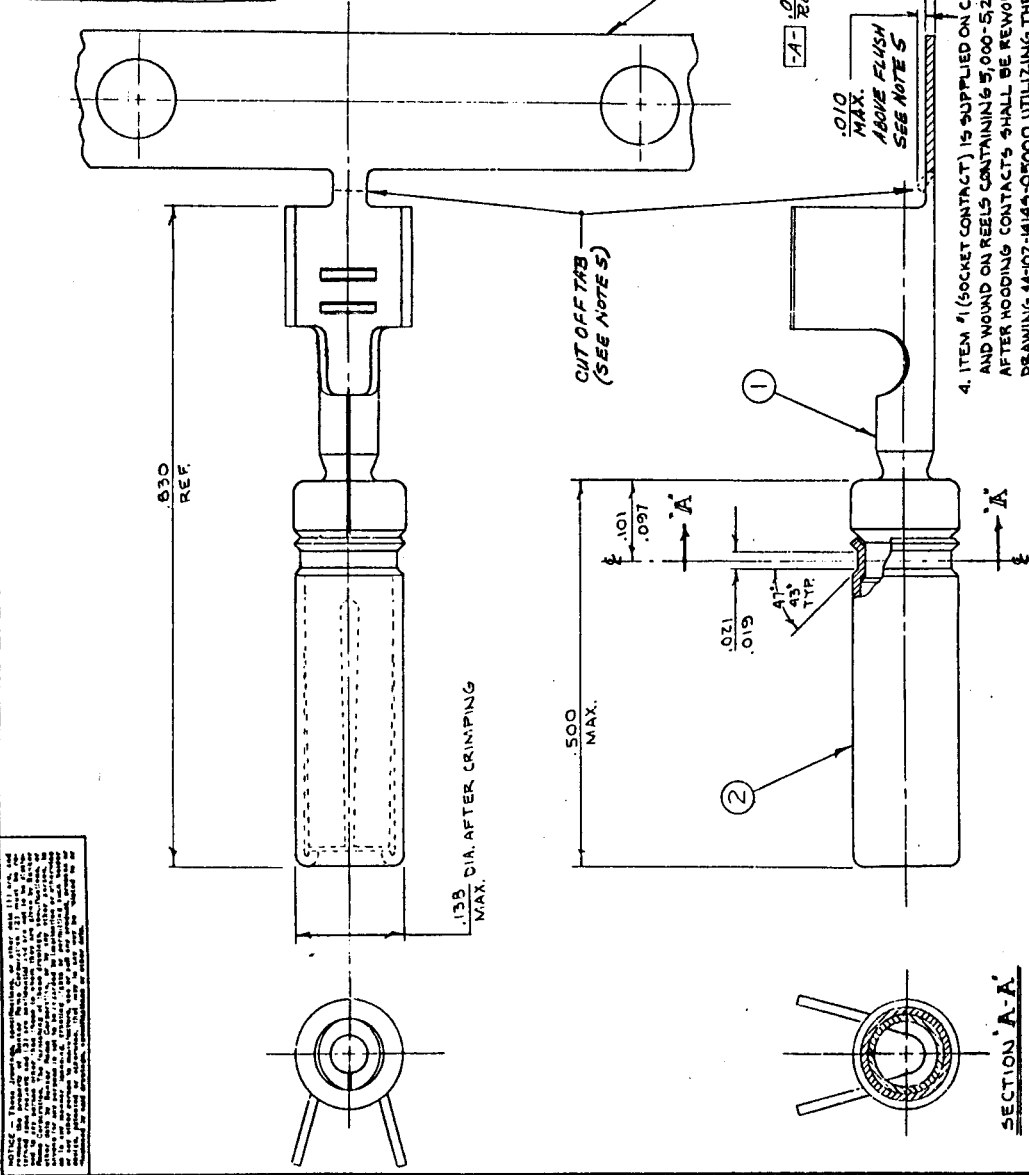
- NOTES:
1. FINISHED PART TO BE FREE OF ALL FRACTURES AND BURRS.
  2. DELETED
  3. THREE TEST STRIPS FROM CONTACT STOCK MUST ACCOMPANY EACH CONTACT LOT AND MUST BE TESTED FOR CONFORMANCE TO TENSILE STRENGTH AND PLATING THICKNESS REQUIREMENTS PER AMPH. SPEC. 123-1604. TEST STRIPS SHALL BE 9.0/10.0" LONG.
  4. SEE AMPHENOL DRAWING 123-1591 FOR CRIMP POCKET DETAIL AND CARRIER STRIP DETAIL. NOTE - CONTACTS TO BE SUPPLIED ON CARRIER STRIP.
  5. UNLESS OTHERWISE SPECIFIED, MAX ALLOWABLE SEAM GAP SHALL BE .008.
  6. CONTACTS TO BE LOADED (5.000-5.250/REEL) ON REEL 120-2016-2 USING INTERLACE PAPER 120-2015-2 (207 FT./REEL) AND FILLER 120-2018-2 (16.5 FT./REEL). PACK IN CARTON 120-1130-01 ALONG WITH INSTRUCTION SHEET 123-1617. AMPHENOL TO SUPPLY PACKING MATERIALS.
  7. FOR REEL LOADING INSTRUCTIONS REF. 44-100-1414P-05000.
  8. PROGRESSIVE STRIP OR THAT PORTION OF THE PROGRESSIVE STRIP THAT REPRESENTS THE BLANK DIMENSIONS CONTROLLED BY AMPH. DRAWING 123-1591 SHALL ACCOMPANY EACH LOT FOR INSPECTION PURPOSES.

9. ALL ITEMS MANUFACTURED UNDER THIS PART NUMBER SHALL MEET THE QUALITY ASSURANCE REQUIREMENTS OF GAP 156.
10. MAXIMUM CAMBER ALLOWED ON THE CARRIER STRIP AFTER STAMPING IS 1/4" IN A 24 INCH LENGTH.
11. MATERIAL: OLIN ALLOY 194, 1/2 HARD, .012 ± .0005 THICK. SEE AMPHENOL SPEC. 123-1604 FOR REQ. (1-216-14-134).
12. FINISH: PREPLATED STOCK, BRIGHT TIN, SEE AMPHENOL SPEC. 123-1604 FOR REQUIREMENTS.

ITEM NO.	PART OR IDENTIFICATION NO.	PARTS LIST	NONREPLICATION OR DESCRIPTION	QTY	RECD
		<b>Amphenol</b>			
TITLE: PIN CONTACT FOR 14/16/18 A.W.G. WIRE (INSULATION RANGE - .080/.125)					
UNLESS OTHERWISE SPECIFIED TOLERANCES U.S. METRIC .XX ± .010 .010 .XXX ± .005 .005 ANGLES ± .1° .1°					
FOR MATERIALS AND FINISHES SEE NOTES REMOVE SHARP EDGES DIMENSIONS U.S. INCHES (SHEM) (MM)					
DRAWING FILE: \DRAWING\VA\1001414P.DWG APPROVAL DATE DRAWN Y.M. LEE 8/15/95 CHECKED Y.M. LEE 8/16/95					
SIZE: B SCALE: NONE SHEET 1 OF 1					

DOCUMENT CONTROL  
 14 JUL 88  
 RECEIVED

REV. NO.	DESCRIPTION	DATE	APPROVED
A	RELEASED TO PRODUCTION		
B	NOTE 3 ADDED ON 4/12/88	3-22-76	JM
C	NOTE 4 ADDED ON 4/12/88	3-22-76	JM
D	ADDED NOTE 5 CUT OFF DIM. ON 4/12/88	3-22-76	JM
E	ADDED NOTE 1, 2, 3, 4, 5, 6, 7, 8, 9, 10, 11, 12, 13, 14, 15, 16, 17, 18, 19, 20, 21, 22, 23, 24, 25, 26, 27, 28, 29, 30, 31, 32, 33, 34, 35, 36, 37, 38, 39, 40, 41, 42, 43, 44, 45, 46, 47, 48, 49, 50, 51, 52, 53, 54, 55, 56, 57, 58, 59, 60, 61, 62, 63, 64, 65, 66, 67, 68, 69, 70, 71, 72, 73, 74, 75, 76, 77, 78, 79, 80, 81, 82, 83, 84, 85, 86, 87, 88, 89, 90, 91, 92, 93, 94, 95, 96, 97, 98, 99, 100	3-22-76	JM
F	REV'D NOTE 1, 3, 4, 5, 6, 7, 8, 9, 10, 11, 12, 13, 14, 15, 16, 17, 18, 19, 20, 21, 22, 23, 24, 25, 26, 27, 28, 29, 30, 31, 32, 33, 34, 35, 36, 37, 38, 39, 40, 41, 42, 43, 44, 45, 46, 47, 48, 49, 50, 51, 52, 53, 54, 55, 56, 57, 58, 59, 60, 61, 62, 63, 64, 65, 66, 67, 68, 69, 70, 71, 72, 73, 74, 75, 76, 77, 78, 79, 80, 81, 82, 83, 84, 85, 86, 87, 88, 89, 90, 91, 92, 93, 94, 95, 96, 97, 98, 99, 100	3-22-76	JM



**SECTION A-A**

**NOTES:**

1. AFTER CRIMPING HOOD (ITEM #2) IN PLACE, CONTACT SHALL BE CAPABLE OF MEETING THE FOLLOWING WITHDRAWAL FORCE REQUIREMENTS WHEN A STEEL TEST PIN IS INSERTED TO A DEPTH OF .250: THE TEST PIN MUST HAVE A SPHERICAL R. & SURFACE FINISH OF 7 TOV. 25 OZ. MAX. WITH .071 ± .0001 DIA. PIN. 5 OZ. MIN. WITH .075 ± .0001 DIA. PIN.
2. AFTER ASSEMBLY HOOD MAY ROTATE BUT NOT HAVE ANY LATERAL MOVEMENT: HOOD SHALL NOT SEPARATE FROM SOCKET CONTACT BODY WHEN SUBJECT TO A 15 LB. PULL.
3. ITEMS MANUFACTURED UNDER THIS PART NUMBER SHALL MEET THE QUANTITY ASSURANCE REQUIREMENTS OF QAP 156.

4. ITEM #1 (SOCKET CONTACT) IS SUPPLIED ON CARRIER AND WOUND ON REELS CONTAINING 5,000-5250 PCS. AFTER HOODING CONTACTS SHALL BE REMOIND PER DRAWING 44-102-14149-05000 UTILIZING THE ORIGINAL PACKAGING MATERIALS. AFTER HOODING EACH REEL SHALL CONTAIN A MINIMUM OF 5,000 PCS.

5. DEFECTIVE CONTACTS DUE TO IMPAIRED ASSEMBLY OF HOOD SHALL BE REMOVED FROM THE CARRIER STRIP, EACH REEL ASSEMBLY (SEE DRAWING 44-102-14145-05000) SHALL HAVE NO LESS THAN 500 CONTACTS. THERE SHALL NOT BE MORE THAN 50 CONTACTS MISSING IN A ROL. CUT OFF TAB REMAINING ON THE CARRIER STRIP AFTER REMOIND CONTACTS SHALL BE FLUSH WITH THE CARRIER STRIP TO .010 MAX. ABOVE OR BELOW FLUSH.

ITEM NO.	DESCRIPTION	QUANTITY	UNIT
1	44-100-14145	1	SOCKET CONTACT
2	44-101-1400-02	1	CONTACT HOOD

NO.	DESCRIPTION	DATE	BY
1	44-100-14145	3-22-76	JM
2	44-101-1400-02	3-22-76	JM

REV. NO.	DESCRIPTION	DATE	APPROVED
A	RELEASED TO PRODUCTION		
B	NOTE 3 ADDED ON 4/12/88	3-22-76	JM
C	NOTE 4 ADDED ON 4/12/88	3-22-76	JM
D	ADDED NOTE 5 CUT OFF DIM. ON 4/12/88	3-22-76	JM
E	ADDED NOTE 1, 2, 3, 4, 5, 6, 7, 8, 9, 10, 11, 12, 13, 14, 15, 16, 17, 18, 19, 20, 21, 22, 23, 24, 25, 26, 27, 28, 29, 30, 31, 32, 33, 34, 35, 36, 37, 38, 39, 40, 41, 42, 43, 44, 45, 46, 47, 48, 49, 50, 51, 52, 53, 54, 55, 56, 57, 58, 59, 60, 61, 62, 63, 64, 65, 66, 67, 68, 69, 70, 71, 72, 73, 74, 75, 76, 77, 78, 79, 80, 81, 82, 83, 84, 85, 86, 87, 88, 89, 90, 91, 92, 93, 94, 95, 96, 97, 98, 99, 100	3-22-76	JM
F	REV'D NOTE 1, 3, 4, 5, 6, 7, 8, 9, 10, 11, 12, 13, 14, 15, 16, 17, 18, 19, 20, 21, 22, 23, 24, 25, 26, 27, 28, 29, 30, 31, 32, 33, 34, 35, 36, 37, 38, 39, 40, 41, 42, 43, 44, 45, 46, 47, 48, 49, 50, 51, 52, 53, 54, 55, 56, 57, 58, 59, 60, 61, 62, 63, 64, 65, 66, 67, 68, 69, 70, 71, 72, 73, 74, 75, 76, 77, 78, 79, 80, 81, 82, 83, 84, 85, 86, 87, 88, 89, 90, 91, 92, 93, 94, 95, 96, 97, 98, 99, 100	3-22-76	JM

REV. NO.	DESCRIPTION	DATE	APPROVED
A	RELEASED TO PRODUCTION		
B	NOTE 3 ADDED ON 4/12/88	3-22-76	JM
C	NOTE 4 ADDED ON 4/12/88	3-22-76	JM
D	ADDED NOTE 5 CUT OFF DIM. ON 4/12/88	3-22-76	JM
E	ADDED NOTE 1, 2, 3, 4, 5, 6, 7, 8, 9, 10, 11, 12, 13, 14, 15, 16, 17, 18, 19, 20, 21, 22, 23, 24, 25, 26, 27, 28, 29, 30, 31, 32, 33, 34, 35, 36, 37, 38, 39, 40, 41, 42, 43, 44, 45, 46, 47, 48, 49, 50, 51, 52, 53, 54, 55, 56, 57, 58, 59, 60, 61, 62, 63, 64, 65, 66, 67, 68, 69, 70, 71, 72, 73, 74, 75, 76, 77, 78, 79, 80, 81, 82, 83, 84, 85, 86, 87, 88, 89, 90, 91, 92, 93, 94, 95, 96, 97, 98, 99, 100	3-22-76	JM
F	REV'D NOTE 1, 3, 4, 5, 6, 7, 8, 9, 10, 11, 12, 13, 14, 15, 16, 17, 18, 19, 20, 21, 22, 23, 24, 25, 26, 27, 28, 29, 30, 31, 32, 33, 34, 35, 36, 37, 38, 39, 40, 41, 42, 43, 44, 45, 46, 47, 48, 49, 50, 51, 52, 53, 54, 55, 56, 57, 58, 59, 60, 61, 62, 63, 64, 65, 66, 67, 68, 69, 70, 71, 72, 73, 74, 75, 76, 77, 78, 79, 80, 81, 82, 83, 84, 85, 86, 87, 88, 89, 90, 91, 92, 93, 94, 95, 96, 97, 98, 99, 100	3-22-76	JM