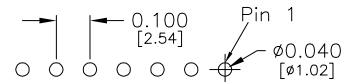
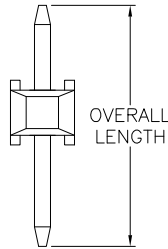
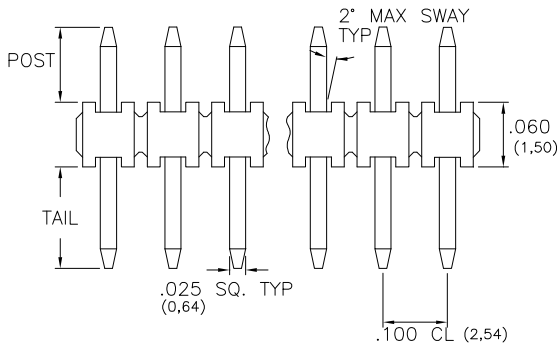
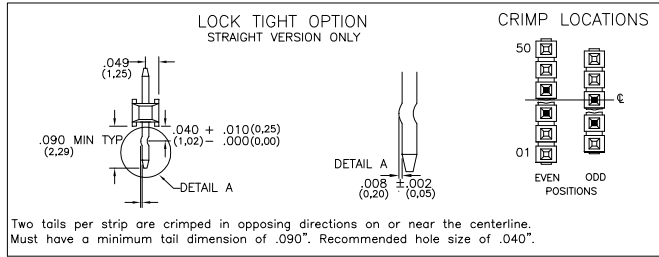
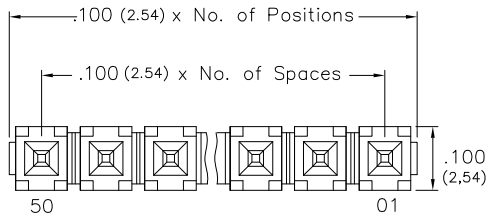


Major League Electronics .100 cl Ultra Low Profile Headers - Custom



Recommended P.C. Board Layout

Tails may be clipped to achieve desired pin length

$$\text{Length (L)} - \text{Post Height (P)} - .060 (1.50) = \text{Tail Length (T)}$$

Ordering Information

ULTSHC-1 [XX] - S - [XX] - [XX] - [XX] - [XX] - [XX] - [X] - LF

Pins Per Row
01 - 50
Row Specification
S = Single Row

Lead Free

Every Other Pin Filled (.200 Centers)
Leave blank if not needed
E = Filled

Polarized Position
Leave blank if not needed
If required, specify empty pin position, e.g. 012 for Pin 12

Lock Tight "LT" (Optional)
Leave blank if not needed
LT = With

Pin Options			
Overall Pin Length	Max Post Length		
.300	7.62mm	.150	3.81mm 02
.335	8.51mm	.185	4.70mm 03
.430	10.92mm	.280	7.11mm 06
.445	11.30mm	.295	7.49mm 08
.456	11.58mm	.306	7.77mm 10
.480	12.19mm	.330	8.38mm 11
.530	13.46mm	.380	9.65mm 14
.630	16.00mm	.480	12.19mm 16
.730	18.54mm	.580	14.73mm 20
.830	21.08mm	.680	17.27mm 22
.930	23.62mm	.780	19.81mm 24
1.030	26.16mm	.880	22.35mm 26
1.130	28.70mm	.980	24.89mm 28
1.230	31.24mm	1.080	27.43mm 30
1.330	33.78mm	1.180	29.97mm 32
1.430	36.32mm	1.280	32.51mm 34
1.530	38.86mm	1.380	35.05mm 36

Recommended Minimum Tail Length - .090 (2.29)

Desired Post Height
Please specify
E.g. .230 (5.84) = 230

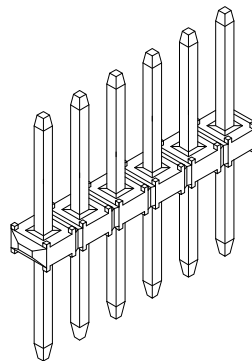
Plating Options	
G	- 10µ Gold on Contact area/Flash on Tail
T	- Matte Tin all Over
GT	- 10µ Gold on Contact Area / Matte Tin on Tail
H	- 30µ Gold on Contact Area / Matte Tin on Tail
F	- Gold Flash over Entire Pin

Specifications

- Current Rating: 3.0 Ampere
- Insulation Resistance: 1000MΩ Min.
- Dielectric Withstanding: 600V AC
- Contact Resistance: 20 mΩ Max.
- Operating Temperature: -40°C to + 105°C
- Max. Process Temperature:
 - Peak: 260°C up to 20 secs.
 - Process: 230°C up to 60 secs.
 - Wave: 260°C up to 6 secs.
 - Manual Solder: 350°C up to 5 secs.

Materials

- Contact Material: Phosphor Bronze
- Insulator Material: Nylon 6T
- Plating: Au or Sn over 50µ" (1.27) Ni



Mates with:

- BCSS,
- BSSH,
- BSSHC,
- BSSQ,
- BSSQC,
- BSSQM,
- LBCSS,
- LSMBC,
- LSWSS,
- SMBC,
- SSHQ,
- SSHQR,
- SSHR,
- SSHS,
- SSHSM

Products cut to specific sizes are uncancellable/nonreturnable

Parts are subject to change without notice

ULTSHC-1-S SERIES

.100 cl Single Row
Ultra Low Profile Header - Custom

23 JAN 07

Scale
NTS

UNLESS OTHERWISE SPECIFIED
DIMENSIONS IN INCHES (MM)
TOLERANCES ARE:

ONE PLACE DECIMALS ±.100
TWO PLACE DECIMALS ±.010
THREE PLACE DECIMALS ±.005
FOUR PLACE DECIMALS ±.0020
ANGLES
±5°



4235 Earnings Way, New Albany, Indiana, 47150, USA
1-800-782-3486 (USA/Canada/Mexico)

Tel: 812-944-7244
Fax: 812-944-7268

E-mail: mle@mlelectronics.com
Web: www.mlelectronics.com

Edition
1

Sheet
1/1