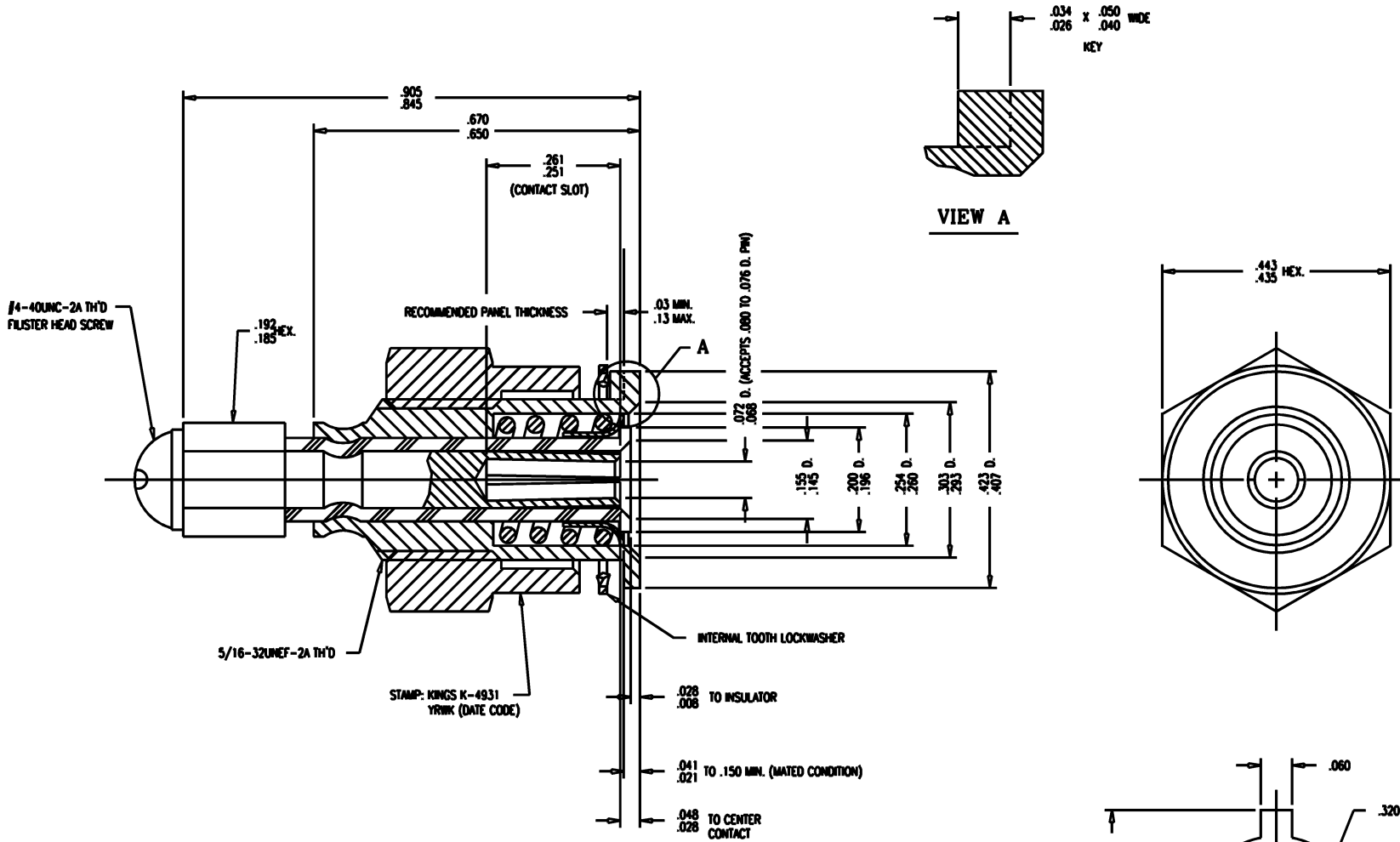


GSD

REVISIONS	
ISSUE	CHANGES
1	ADD VIEW A & NOTES 3 & 4 VLS 05/07/92
2	ER 35626 KH 06/14/94
3	CN 36016 B VLS 12/20/94
4	CN 36281 B VLS 05/04/95
5	CN 36922 C KH 04/10/96
6	CN 38030 E TML 07/21/00



NOTES:

- MATERIALS:**
INSULATORS-POLYETHYLENE, PER MIL-P-22748A
CENTER CONTACT-BER. COP., ASTM-B-196
LOCKWASHER-PHOSPHOR BRONZE, ASTM-B-103
SCREW-STEEL
ALL OTHER METAL PARTS-BRASS, ASTM-B16
- FINISHES:**
ALL METAL PARTS-KINGS TARNISH RESISTANT NICKEL FINISH (TR-5)
- ELECTRICAL CHARACTERISTICS:**
1500V-60Hz HI-POT
25 MIL VOLTAGE DROP
100 MEGOHM IMPEDANCE
LEAKAGE NOT TO EXCEED 0.5 MIL
- MECHANICAL CHARACTERISTICS:**
DEMATING FORCE- 3.0 LBS
RECOMMENDED TORQUE IS 50 INCH POUNDS.
- ALL COMPONENTS TO BE ASSEMBLED AS SHOWN.

WAS: KAM1262 K4931S

K-4931

SCALE 6:1	
APPROX SURFACE AREA	
WAS: E-17013	
USED ON	
REF:	
5 VOLT CONNECTOR	
DESIGN KH	09/11/91
DESIGN VLS	09/11/91
APPR.	DATE

KINGS
ELECTRONICS CO., INC.
ROCK HILL, SOUTH CAROLINA 29730

K-4931

GSD