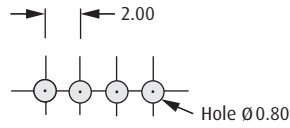
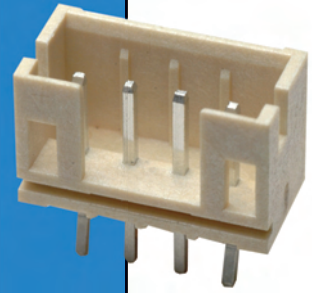


# M22 Connectors

## Latched Male PC Tail

- ❖ Shrouded connectors for added protection of male pins.
- ❖ Mates with female connectors shown on page 108.
- ❖ Female Crimp connector latches into both male connectors.

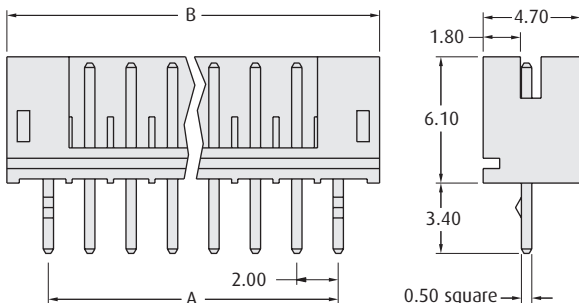


Recommended PC Board Pattern

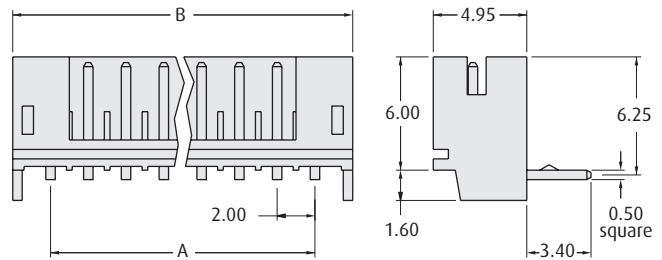
### CALCULATION

<b>A</b>	$2.00 \times (\text{No. of ways per row} - 1)$
<b>B</b>	$A + 4.00$

### VERTICAL



### HORIZONTAL



### HOW TO ORDER

**M22 - 22 X XX 46**

SERIES CODE

TYPE

<b>0</b>	Vertical
<b>1</b>	Horizontal

NO. OF WAYS PER ROW

02 to 15

FINISH

46 Tin

All dimensions in mm.

[www.harwin.com](http://www.harwin.com)

2mm (.080") PITCH

