

PLEASE CHECK WWW.MOLEX.COM FOR LATEST PART INFORMATION

Part Number: [0350220015](#)
Status: **Active**
Description: 2.50mm (.098") Pitch Board-In Crimp Housing, 2.95mm (.116") Height, Right Angle and Vertical, 15 Circuits

Documents:

| | |
|--|--|
| 3D Model | Product Specification PS-35022-003 (PDF) |
| Drawing (PDF) | RoHS Certificate of Compliance (PDF) |
| Product Specification PS-35021-001 (PDF) | |

Agency Certification

| | |
|-----|---------|
| CSA | LR19980 |
| UL | E29179 |

General

| | |
|----------------|-----------------------|
| Product Family | Crimp Housings |
| Series | 35022 |
| Product Name | Board-In |

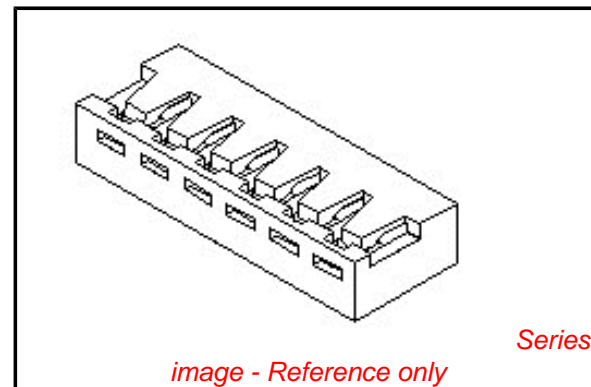
Physical

| | |
|-------------------------------|-----------------|
| Circuits (maximum) | 15 |
| Color - Resin | Natural |
| Flammability | 94V-0 |
| Gender | Male |
| Glow-Wire Compliant | No |
| Lock to Mating Part | None |
| Material - Resin | Nylon |
| Number of Rows | 1 |
| Packaging Type | Bag |
| Panel Mount | No |
| Pitch - Mating Interface (in) | 0.098 In |
| Pitch - Mating Interface (mm) | 2.50 mm |
| Stackable | No |
| Temperature Range - Operating | -40°C to +105°C |

Material Info

Reference - Drawing Numbers

| | |
|-----------------------|---|
| Product Specification | PS-35021-001, PS-35022-003, RPS-35022-001 |
| Sales Drawing | SD-35022-00** |



EU RoHS

ELV and RoHS Compliant
REACH SVHC Contains SVHC: No
Halogen-Free Status

China RoHS



Not Reviewed

Need more information on product environmental compliance?

Email productcompliance@molex.com
 For a multiple part number RoHS Certificate of Compliance, [click here](#)

Please visit the [Contact Us](#) section for any non-product compliance questions.

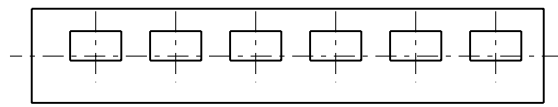
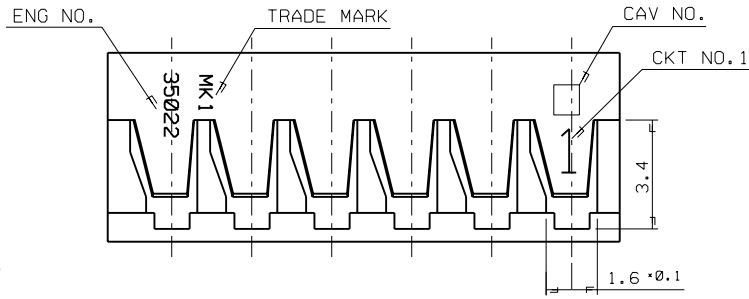
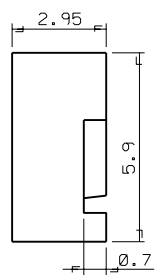
Search Parts in this Series

[35022Series](#)

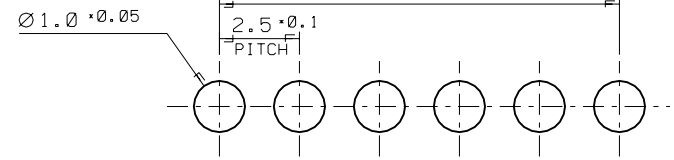
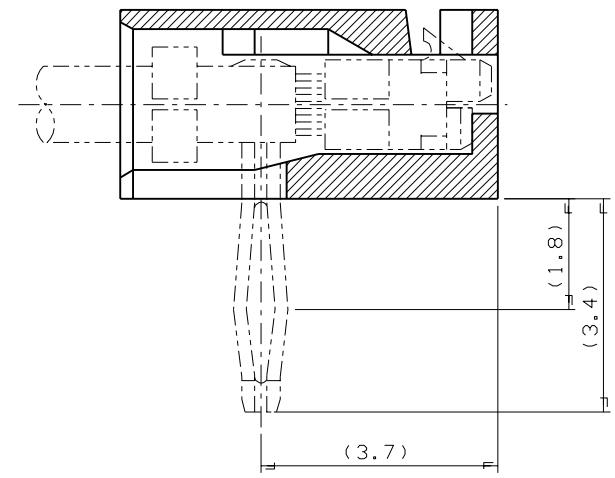
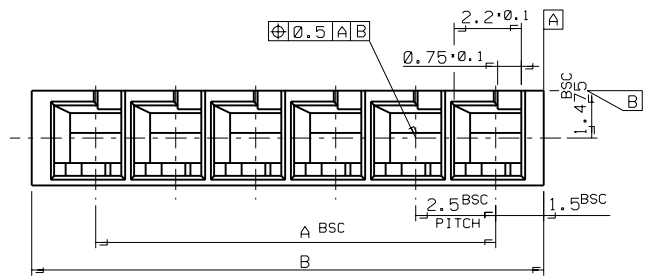
Use With

[35044](#) , [35021](#)

PROJECT NO. SIMILAR ITEM EDP NO. 35022-00** ENG. NO. SD 35022-00**



NOTE
 1. MATERIAL : NYLON 66 UL94V-0
 2. APPLIED TERMINAL : 35021-1001/1101



P.C. BOARD LAY OUT
(THK. : 1.6T)

| | | | | | | | |
|------|------|------------|---------|------|------|------------|---------|
| | | | | 23.5 | 20.0 | -0009 | 9 |
| 41.0 | 37.5 | 35022-0016 | 16 | 21.0 | 17.5 | -0008 | 8 |
| 38.5 | 35.0 | -0015 | 15 | 18.5 | 15.0 | -0007 | 7 |
| 36.0 | 32.5 | -0014 | 14 | 16.0 | 12.5 | -0006 | 6 |
| 33.5 | 30.0 | -0013 | 13 | 13.5 | 10.0 | -0005 | 5 |
| 31.0 | 27.5 | -0012 | 12 | 11.0 | 7.5 | -0004 | 4 |
| 28.5 | 25.0 | -0011 | 11 | 8.5 | 5.0 | -0003 | 3 |
| 26.0 | 22.5 | -0010 | 10 | 6.0 | 2.5 | 35022-0002 | 2 |
| B | A | ENG NO. | CKT NO. | B | A | ENG NO. | CKT NO. |

| | | | | | | | |
|-----|-----------------|--------|----------|--------------------------------------|--|----------------------------|--|
| | | | | MATERIAL NYLON 66 UL94V-0 | | molex MOLEX-KOREA CO.,LTD. | |
| | | | | GENERAL TOLERANCE DIMENSION : 0.3 | | DRAWN BY HSSHIN | |
| | | | | ANGLE : 1° | | CHK'D BY | |
| G | REVISED | 96-019 | 96-2/14 | DIMENSION CLASSIFICATION | | APPR'D BY | |
| F | REDRAWING | 93-021 | 93-10/26 | ▽ : CRITICAL ▼ : MAJOR | | SCALE 7-1 | |
| | | | | () : REFERENCE | | TITLE: 2.5MM PITCH | |
| LTR | REVISION RECORD | ECN | DATE | ASS'Y PART | | R/A B-IN CONNECTOR | |
| | | | | DESCRIPTION/ENG. NO. | | HOUSING | |
| | | | | REVISE ONLY ON CAD SYSTEM | | SHEET 10F1 | |
| | | | | | | ENG. NO. SD 35022-00** | |
| | | | | | | REV G | |