

New Jersey Semi-Conductor Products, Inc.

20 STERN AVE.
 SPRINGFIELD, NEW JERSEY 07081
 U.S.A.

TELEPHONE: (201) 376-
 (212) 227-
 FAX: (201) 376-

PARAMETERS

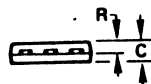
2N4441

SCR, V(DRM) = 50 V TO 99.9 V

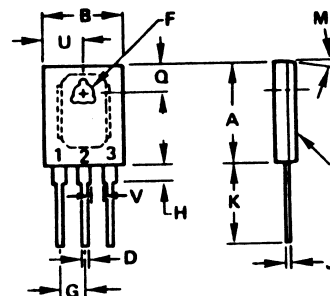
Description: SCR, V(DRM) = 50 V to 99.9 V

Manufacturer..... many
 Mil/High-Rel? (Y/N).....
 V(drm) Max..... 50
 It(stat) Max. (A)..... 8.02
 @Temp. (test) (xC)..... 100u
 Supp Curr. I(TSM)..... 80%,
 Firing Char-Igt Max..... 60
 Firing Char-Vgt Max..... 2.
 Id(off) Max. (A)..... 2.0m
 @Temp. (test) (xC)..... 100u
 I(h) Max. (A)..... 70
 V(T) Max..... 2.0
 @It (A)..... 15
 Dv/Dt Worst Case..... 50B%
 t(switch) Off Typ. Time (S)... 1.0u
 @It (test) (A)..... 5.0
 t(switch) Off Typ. Time (S)... 15u
 Oper. Temp (xC) Min..... -40
 Oper. Temp (xC) Max..... 100u
 Pkg Style..... TO-225AA
 Surface Mounted (Y/N)..... N

u Junction Temperature % @ above 125xC B Typical 2 It(rms)
 Measured at < 25xC , For less than + cycle



DIM	MILLIMETERS		INCHES	
	MIN	MAX	MIN	MAX
A	16.13	16.38	0.635	0.645
B	12.57	12.83	0.495	0.505
C	3.18	3.43	0.125	0.135
D	1.09	1.24	0.043	0.049
F	3.51	3.76	0.138	0.148
G	4.22 BSC		0.166 BSC	
H	2.67	2.92	0.105	0.115
J	0.813	0.864	0.032	0.034
K	15.11	16.38	0.595	0.645
M	90° TYP		90° TYP	
Q	4.70	4.95	0.185	0.195
R	1.91	2.16	0.075	0.085
U	6.22	6.48	0.245	0.255
V	2.03	-	0.080	-



STYLE 1:
 PIN 1. CATHODE
 2. ANODE
 3. GATE