

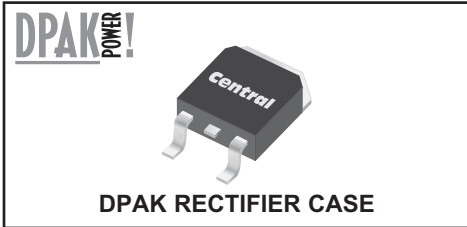
CSHD6-100C
SURFACE MOUNT
DUAL, COMMON CATHODE
HIGH VOLTAGE
SILICON SCHOTTKY RECTIFIERS
6 AMP, 100 VOLTS



www.centrasemi.com

DESCRIPTION:

The CENTRAL SEMICONDUCTOR CSHD6-100C is a Silicon Schottky Rectifier designed for surface mount high voltage applications requiring a low forward voltage drop.



MARKING: FULL PART NUMBER

| MAXIMUM RATINGS: ($T_C=25^\circ\text{C}$ unless otherwise noted) | SYMBOL | | UNITS |
|--------------------------------------------------------------------------|----------------|-------------|--------------------|
| Peak Repetitive Reverse Voltage | V_{RRM} | 100 | V |
| Average Rectified Forward Current ($T_C=120^\circ\text{C}$) | I_O | 6.0 | A |
| Peak Forward Surge Current, $t_p=10\text{ms}$ | I_{FSM} | 50 | A |
| Peak Repetitive Reverse Surge Current, $t_p=2.0\mu\text{s}$ | I_{RRM} | 1.0 | A |
| Critical Rate of Rise of Reverse Voltage | dv/dt | 10,000 | V/ μs |
| Operating and Storage Junction Temperature | T_J, T_{stg} | -65 to +150 | $^\circ\text{C}$ |
| Thermal Resistance | θ_{JC} | 3.5 | $^\circ\text{C/W}$ |

ELECTRICAL CHARACTERISTICS PER DIODE: ($T_C=25^\circ\text{C}$ unless otherwise noted)

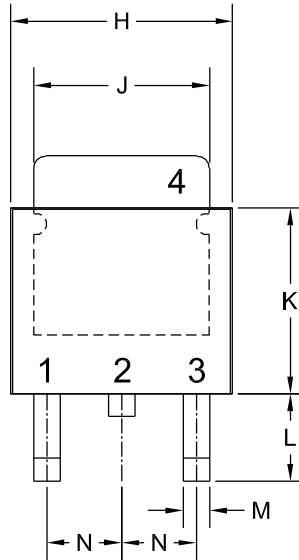
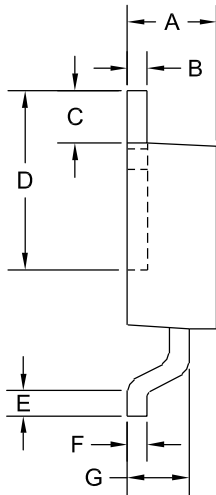
| SYMBOL | TEST CONDITIONS | MAX | UNIT |
|---------------|------------------------------------------|------------|---------------|
| I_R | $V_R=100\text{V}$ | 30 | μA |
| I_R | $V_R=100\text{V}, T_C=125^\circ\text{C}$ | 10 | mA |
| V_F | $I_F=3.0\text{A}$ | 0.75 | V |
| V_F | $I_F=3.0\text{A}, T_C=125^\circ\text{C}$ | 0.70 | V |
| V_F | $I_F=6.0\text{A}$ | 1.10 | V |
| V_F | $I_F=6.0\text{A}, T_C=125^\circ\text{C}$ | 1.05 | V |

CSHD6-100C

**SURFACE MOUNT
DUAL, COMMON CATHODE
HIGH VOLTAGE
SILICON SCHOTTKY RECTIFIERS
6 AMP, 100 VOLTS**



DPAK RECTIFIER CASE - MECHANICAL OUTLINE

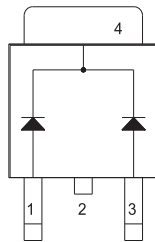


R2

LEAD CODE:

- 1) Anode 1
 - 2) Cathode
 - 3) Anode 2
 - 4) Cathode
- Pin 2 is Common to the Tab (4).

MARKING: FULL PART NUMBER



| SYMBOL | INCHES | | MILLIMETERS | |
|--------|--------|-------|-------------|------|
| | MIN | MAX | MIN | MAX |
| A | 0.083 | 0.108 | 2.10 | 2.75 |
| B | 0.016 | 0.024 | 0.40 | 0.60 |
| C | 0.063 | | 1.60 | |
| D | 0.203 | 0.219 | 5.15 | 5.55 |
| E | 0.039 | | 1.00 | |
| F | 0.020 | | 0.50 | |
| G | 0.051 | 0.071 | 1.30 | 1.80 |
| H | 0.248 | 0.268 | 6.30 | 6.80 |
| J | 0.197 | 0.217 | 5.00 | 5.50 |
| K | 0.209 | 0.224 | 5.30 | 5.70 |
| L | 0.090 | 0.106 | 2.30 | 2.70 |
| M | 0.012 | 0.031 | 0.30 | 0.80 |
| N | 0.091 | | 2.30 | |

DPAK RECTIFIER (REV: R2)

R5 (17-February 2010)