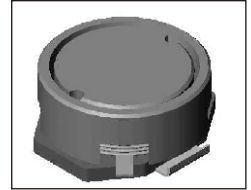


SMT Power Inductor

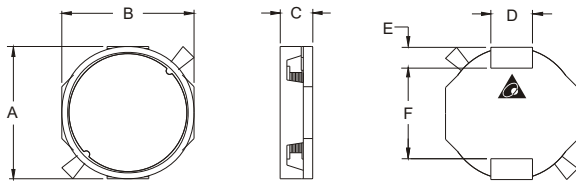
SIWC1365 Type

Features

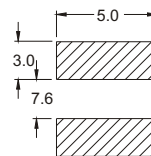
- Low profile (6.8mm max. height) SMD type.
- Magnetically shielded, suitable for high density mounting
- High energy storage and low DCR.
- Provided with embossed carrier tape packing.
- Ideal for power source circuits, DC-DC converter, DC-AC inverters inductor application.
- In addition to the standard versions shown here, customized inductors are available to meet your exact requirements.



Mechanical Dimension:



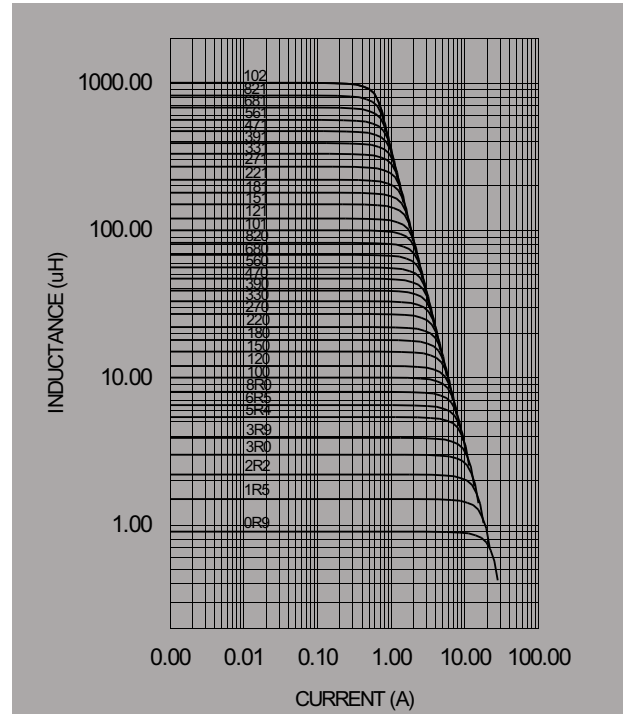
RECOMMENDED PAD



UNIT:mm/inch
 A = 13.0/0.512 Max.
 B = 13.0/0.512 Max.
 C = 6.5±0.3/0.256±0.012
 D = 4.0/0.157
 E = 2.0/0.079
 F = 8.6±0.1 /0.339±0.004

Electrical Characteristics: At 25°C: 1KHz, 1V

PART NO.	L ¹ (uH)	DCR (Ω)MAX	I _{RATED} ² (A dc)
SIWC1365-0R9	0.9	0.010	11
SIWC1365-1R5	1.5	0.012	10
SIWC1365-2R2	2.2	0.014	9.0
SIWC1365-3R0	3.0	0.016	8.0
SIWC1365-3R9	3.9	0.018	6.5
SIWC1365-5R4	5.4	0.020	6.0
SIWC1365-6R5	6.5	0.021	5.5
SIWC1365-8R0	8.0	0.022	5.0
SIWC1365-100	10	0.024	4.8
SIWC1365-120	12	0.026	4.6
SIWC1365-150	15	0.029	4.2
SIWC1365-180	18	0.034	3.7
SIWC1365-220	22	0.038	3.5
SIWC1365-270	27	0.044	3.2
SIWC1365-330	33	0.050	2.8
SIWC1365-390	39	0.060	2.6
SIWC1365-470	47	0.070	2.4
SIWC1365-560	56	0.090	2.2
SIWC1365-680	68	0.100	2.0
SIWC1365-820	82	0.138	1.8
SIWC1365-101	100	0.150	1.6
SIWC1365-121	120	0.185	1.4
SIWC1365-151	150	0.220	1.3
SIWC1365-181	180	0.250	1.1
SIWC1365-221	220	0.330	1.0
SIWC1365-271	270	0.395	0.95
SIWC1365-331	330	0.490	0.90
SIWC1365-391	390	0.564	0.80
SIWC1365-471	470	0.640	0.75
SIWC1365-561	560	0.800	0.68
SIWC1365-681	680	0.970	0.60
SIWC1365-821	820	1.300	0.55
SIWC1365-102	1000	1.500	0.45



1. Tolerance of inductance
0.9~1000uH±20%
2. I_{RATED}: rated current. ΔL<20%, ΔT<45°C at I_{RATED}
3. Operating temperature: -20°C to 105°C (including self-temperature rise)



DELTA ELECTRONICS, INC.

(TAOYUAN PLANT CPBG) 252, SAN YING ROAD, KUEISAN INDUSTRIAL ZONE, TAOYUAN SHIEN, 333, TAIWAN, R.O.C.

TEL: 886-3-3591968; FAX: 886-3-3591991

<http://www.deltaww.com>