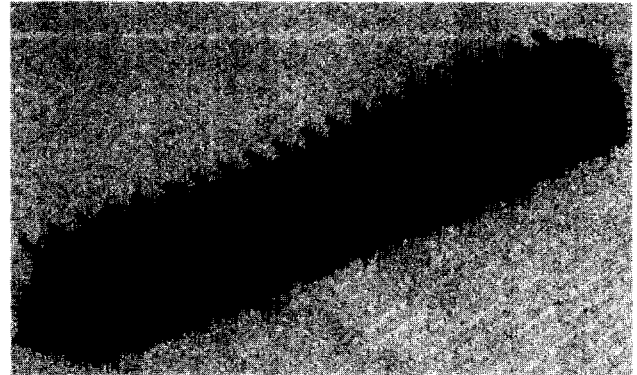
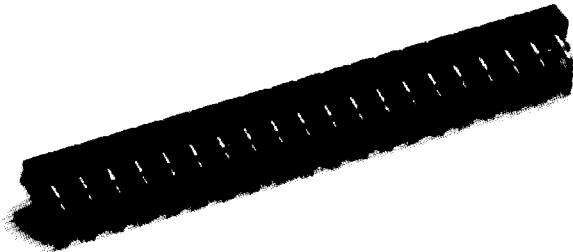


## Single Row Right Angle Board to Board Interconnections



### Features:

- High reliability method of interconnecting PCB to PCB.
- .018" (.46 mm) diameter male pins.
- .100" (2.54 mm) center pin to pin.

### Terminals and Contacts:

Terminal: Brass - Copper Alloy 360, ASTM-B-16

Contact: Beryllium Copper - Copper Alloy 172, ASTM-B-194

### Plating:

Adapter: Tin-Lead or Gold

Socket: Tin-Lead/Gold, Gold/Gold or Tin-Lead/Tin-Lead

Gold per MIL-G-45204

Tin-Lead per MIL-P-81728

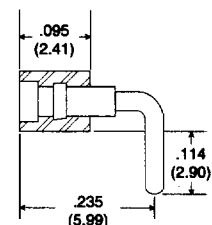
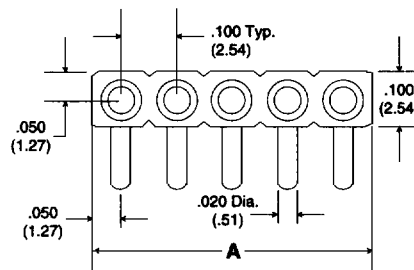
Nickel per QQ-N-290

### Body Material:

Glass Filled Thermoplastic Polyester (P.B.T.), U.L. Rated 94V-O, -60°C to 140°C (-76°F to 284°F)

### Single Row Right Angle Socket

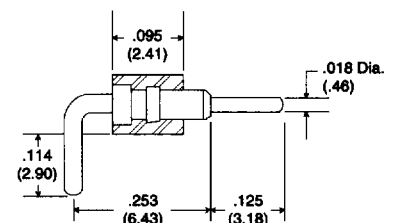
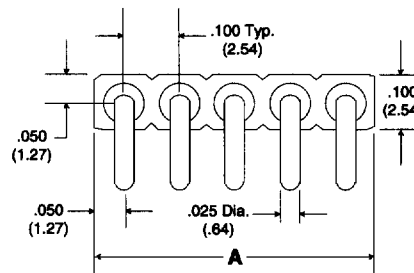
#### LSS XXX - 160 XX



A = Pitch .100" (2.54 mm) x Number of Terminals in Row

### Single Row Right Angle Adapter

#### LSA XXX - 159 X



A = Pitch .100" (2.54 mm) x Number of Terminals in Row

### How To Order

