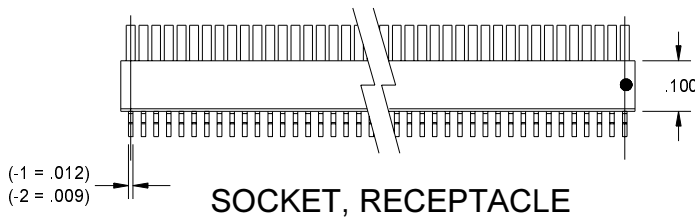
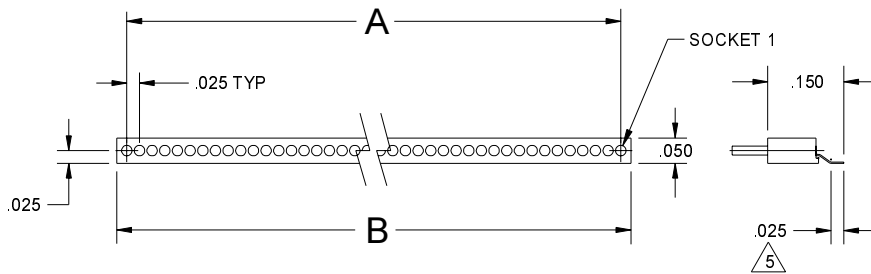


| NO. OF POSITIONS | A NOM | B MAX |
|------------------|-------|-------|
| 2                | .025  | .059  |
| 3                | .050  | .084  |
| 4                | .075  | .109  |
| 5                | .100  | .134  |
| 6                | .125  | .159  |
| 7                | .150  | .184  |
| 8                | .175  | .209  |
| 9                | .200  | .234  |
| 10               | .225  | .259  |
| 11               | .250  | .284  |

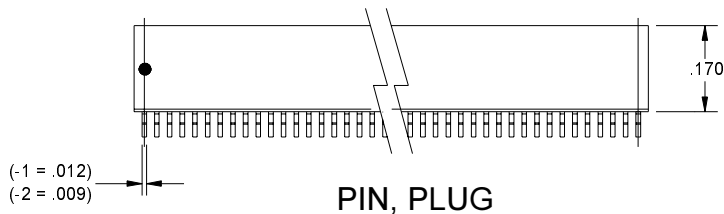
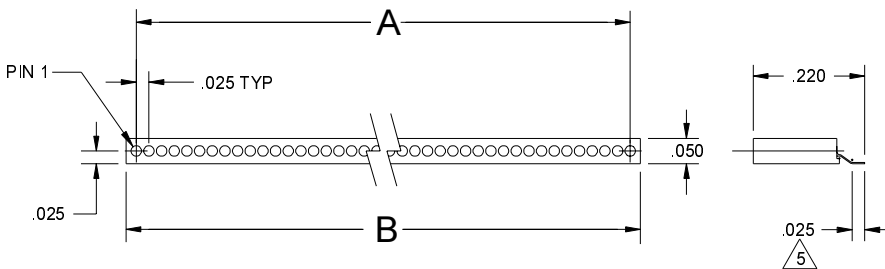
| NO. OF POSITIONS | A NOM | B MAX |
|------------------|-------|-------|
| 12               | .275  | .309  |
| 13               | .300  | .334  |
| 14               | .325  | .359  |
| 15               | .350  | .384  |
| 16               | .375  | .409  |
| 17               | .400  | .434  |
| 18               | .425  | .459  |
| 19               | .450  | .484  |
| 20               | .475  | .509  |
| 21               | .500  | .534  |

| NO. OF POSITIONS | A NOM | B MAX |
|------------------|-------|-------|
| 22               | .525  | .559  |
| 23               | .550  | .584  |
| 24               | .575  | .609  |
| 25               | .600  | .634  |
| 26               | .625  | .659  |
| 27               | .650  | .684  |
| 28               | .675  | .709  |
| 29               | .700  | .734  |
| 30               | .725  | .759  |
| 31               | .750  | .784  |

| NO. OF POSITIONS | A NOM | B MAX |
|------------------|-------|-------|
| 32               | .775  | .809  |
| 33               | .800  | .834  |
| 34               | .825  | .859  |
| 35               | .850  | .884  |
| 36               | .875  | .909  |
| 37               | .900  | .934  |
| 38               | .925  | .959  |
| 39               | .950  | .984  |
| 40               | .975  | 1.015 |



GUIDE PIN AVAILABLE ON BOTH ENDS  
OR IN A SPECIALLY ORDERED LOCATION

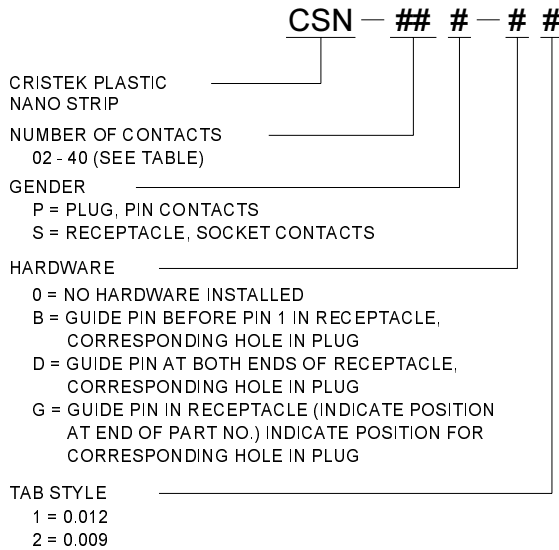


|  |          |                          |  |  |  |       |     |        |     |
|--|----------|--------------------------|--|--|--|-------|-----|--------|-----|
| CRISTEK INTERCONNECTS, INC.<br>www.cristek.com<br>1301 S. Lewis St.<br>Anaheim, CA 92805<br>Phone: (714) 618-2000<br>FAX: (714) 535-4897 | TITLE    | SURFACE MOUNT NANO-STRIP |  |  | DWG. NO.                                 | CSN   |     |        |     |
|  | FILENAME | ADS-CSN-1                |  |  | CODE IDENT NO.                           | 67720 | SHT | 1 OF 2 | REV |
|  |          |                          |  |  | TOLERANCE: .XXX ±.005 .XX ±.01 ANGLE ±1° |       |     |        |     |

## 2.3 NANO CONNECTORS / STRIP

### THINGS TO KNOW ABOUT NANO STRIPS

1. THE CRISTEK PART NUMBER INDICATES THE NUMBER OF CONTACTS NEEDED.
2. TO CALCULATE DIMENSIONS, ADD ONE CONTACT POSITION FOR EACH GUIDE PIN/OPENING REQUIRED.
3. GUIDE PINS ARE INSTALLED IN THE RECEPTACLES. MATING PLUGS MUST HAVE CORRESPONDING OPENINGS TO ACCOMMODATE THE HARDWARE.
4. HARDWARE CAN BE POSITIONED TO CONFORM TO CUSTOMER SPECIFICATIONS. PLEASE CONTACT CRISTEK FOR FURTHER INFORMATION.
5. SPECIAL "NANO" CONNECTORS WITH MULTIPLE ROW CONFIGURATIONS AND FOR END-ON-END STACKING APPLICATIONS ARE ALSO AVAILABLE. PLEASE CONTACT CRISTEK FOR DETAILS.



**1. MATERIALS:**

CONTACT - BeCu PER ASTM B194  
INSULATOR - LCP PER MIL-M-24519, TYPE GLCP-30F.

**2. FINISH:**

CONTACT - GOLD PLATED PER MIL-C-45204, TYPE II, OVER NICKEL PER QQ-N-290.

**3. SPECIFICATIONS:**

CURRENT RATING ..... 1 AMP MAX  
TEMPERATURE RATING ..... -65° C TO +125° C  
INSULATION RESISTANCE ..... 5000 MEGOHMS MIN  
DWV AT SEA LEVEL ..... 350 VAC  
DWV AT 70,000 FT ALTITUDE --- 100 VAC  
CONTACT RESISTANCE ..... 30 mV DROP @ 1 A, 10 mA  
CONTACT RETENTION ..... 2 LBS AXIAL LOAD  
ENGAGEMENT FORCE ..... 5 oz MAX  
SEPARATION FORCE ..... 0.4 oz MIN

**4. ADDITIONAL INFORMATION:**

OTHER CONFIGURATIONS AVAILABLE. CONSULT CRISTEK FOR ORDERING INFORMATION.

FOR THROUGH HOLE MOUNT NANO CONNECTOR, SEE CNS STYLE.

|  |  |                                |                          |
|--|--|--------------------------------|--------------------------|
| CRISTEK INTERCONNECTS, INC.<br>www.cristek.com<br>1301 S. Lewis St.<br>Anaheim, CA 92805<br>Phone: (714) 618-2000<br>FAX: (714) 535-4897 | TITLE<br><b>SURFACE MOUNT NANO-STRIP</b> | DWG. NO.<br><b>CSN</b>         |                          |
|  | FILENAME<br><b>ADS-CSN-2</b>             | CODE IDENT NO.<br><b>67720</b> | SHT <b>2</b> OF <b>2</b> |
| TOLERANCE: .XXX ±.005 .XX ±.01 ANGLE ±1°   |  |                                |                          |