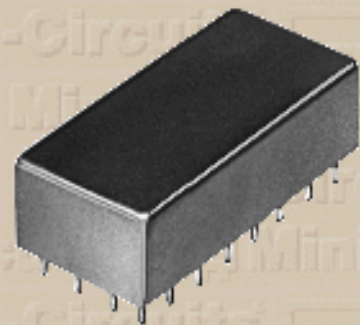


# Power Splitter



## Notes:

- Non-catalog model. Please consult factory for price and delivery.
- General Quality Control Procedures and Environmental Specifications are given in [Mini-Circuits Guarantees Quality](#).
- Hi-Rel, MIL description are given in [Hi-Rel and MIL](#).
- Prices and Specifications subjects to change without notice.

## PSC-ED5825A/1 12 Way-0°

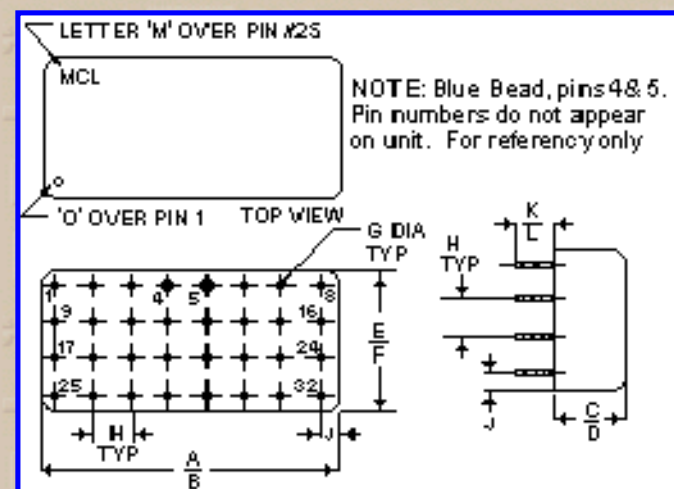
Frequency MHz	Isolation, dB						Insertion Loss, dB Above 10.8dB						Phase Unbalance Degrees			Amplitude Unbalance, dB		
	L		M		U		L		M		U		L	M	U	L	M	U
$f_L - f_U$	Typ.	Min.	Typ.	Min.	Typ.	Min.	Typ.	Max.	Typ.	Max.	Typ.	Max.	Max.	Max.	Max.	Max.	Max.	
2.80-375																		

L=low range( $f_L$  to  $10f_L$ ) M=mid range( $10f_L$  to  $f_U/2$ ) U=upper range( $f_U/2$  to  $f_U$ )

## Pin Connections

Port	Sum Port	Port 1	Port 2	Port 3	Port 4	Port 5	Port 6
bu	5	7	8	1	2	31	32
Port 7	Port 8	Port 9	Port 10	Port 11	Port 12	Gnd Ext	Case Gnd
25	26	22	30	19	27	4	all other pins
Not Used							
11,14,21							

FREQ (MHz)	Insertion Loss (dB) S-1	Amplitude Unbalance (dB)	Isolation (dB)		Phase Unbalance (Degrees)	FREQ (MHz)	VSWR S	VSWR 12
			(dB) ADJ 1-2	(dB) OPP 3-6				
2.800	11.34	0.040	45.55	56.52	0.28	2.80	1.14	1.17
4.600	11.27	0.040	46.37	57.89	0.20	4.60	1.11	1.13
6.400	11.27	0.020	46.48	58.65	0.19	6.40	1.09	1.12
8.200	11.27	0.030	46.30	58.07	0.29	8.20	1.08	1.11
10.00	11.26	0.020	46.02	57.65	0.21	10.00	1.07	1.10
30.40	11.32	0.040	44.33	52.54	0.51	30.40	1.06	1.09
50.80	11.37	0.030	43.33	49.26	0.65	50.80	1.07	1.10
71.20	11.45	0.040	43.00	46.87	0.86	71.20	1.08	1.10
91.60	11.47	0.040	43.14	45.13	1.00	91.60	1.09	1.10
112.00	11.53	0.050	43.64	43.81	1.20	112.00	1.10	1.10
132.40	11.60	0.080	44.91	42.74	1.41	132.40	1.10	1.11
152.80	11.65	0.090	46.52	42.02	1.76	152.80	1.11	1.12
173.20	11.68	0.140	46.82	41.19	2.03	173.20	1.11	1.13
193.60	11.75	0.140	44.39	40.71	2.31	193.60	1.11	1.14
214.00	11.78	0.170	40.71	40.28	2.63	214.00	1.12	1.15
217.60	11.76	0.180	40.08	40.23	2.57	217.60	1.12	1.15
221.20	11.79	0.190	39.42	40.19	2.64	221.20	1.12	1.16
224.80	11.82	0.210	38.96	40.15	2.65	224.80	1.12	1.16
228.40	11.83	0.190	38.36	40.02	2.71	228.40	1.12	1.16
232.00	11.84	0.220	37.86	40.11	2.84	232.00	1.12	1.16
235.60	11.84	0.190	37.31	40.02	2.92	235.60	1.12	1.17
239.20	11.87	0.220	36.79	39.93	2.91	239.20	1.12	1.17
242.80	11.88	0.230	36.23	39.98	2.98	242.80	1.13	1.17
246.40	11.87	0.240	35.72	40.02	2.93	246.40	1.13	1.18
250.00	11.88	0.260	35.24	39.89	3.02	250.00	1.13	1.18



**Case Style - E10** (inch,mm ) weight: 23 grams.

A	B	C	D	E	F	G	H	J
1.580	1.620	.380	.410	.770	.810	.030	.200	.10
40.132	41.148	9.652	10.414	19.558	20.574	0.762	5.080	2.540
K	L	M	N	P	Q	R	S	T
.20	.14							
5.080	3.556							

281.25	11.98	0.280	31.43	39.65	3.59	281.25	1.14	1.21
312.50	11.99	0.350	28.58	40.02	4.25	312.50	1.17	1.24
343.75	12.14	0.470	26.23	40.23	4.84	343.75	1.20	1.28
375.00	12.18	0.500	24.22	40.24	5.57	375.00	1.23	1.31

Tolerance: .x ± .1 .xx ± .03 .xxx ± .015 inch.

Material and Finish:

Header material: C.R.S. Pin material: #52 alloy. Finish: electro tin, hot-oil flowed. Cover material:upro-nickel.

Mounting:

Pin's meniscus (of header): 0.015" max.

Special Tolerances:

Pin diameter ±.005 inch.

 **Mini-Circuits**®

INTERNET <http://www.minicircuits.com>

P.O.Box 350166, Brooklyn, New York 11235-0003 (718) 934-4500 Fax (718) 332-4661

Distribution Centers NORTH AMERICA 800-654-7949 • 417-335-5935 • Fax 417-335-5945 • EUROPE • 44-1252-832600 • Fax 44-1252-837010

ISO 9001 CERTIFIED

[Back](#)

# i2 Technologies US, Inc.

## HTML Pages converted to PDF Document

This document contains component information from the manufacturer's website which are not available in a revision controlled document from the manufacturer. To facilitate the addition of these parts into the Electronics Database, we are converting the HTML pages related to that part, from the manufacturer's website into Adobe PDF format. The contents of this document is based on the information provided on the manufacturer's website, therefore the information may have been changed by the manufacturer since this was created.

