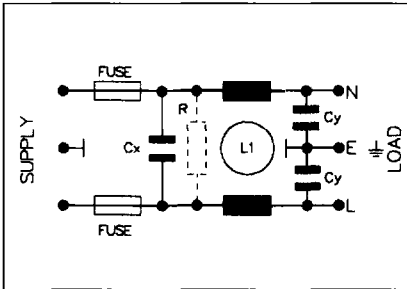


PS25 or PS26/A xx 2x / xx xx



Series	Rating	L/C Circuit	Additional Components	Tag type and Configuration	Panel Thickness
PS25/A	03 = 3A	2 = Version 2	0 = None 1 = Bleed (R) Resistor	28 = 28mm	00 = Flanged
	06 = 6A			63 = 63mm tabs	10 = 1.0mm 15 = 1.5mm 20 = 2.0mm 30 = 3.0mm
PS26/A					



Data	List No.	PS25/Axx2x/xx00	PS26/Axx2x/xxxx	Example
Max. Working Voltage:		250V a.c. 50-400Hz.	250V a.c. 50-400Hz.	PS25/A0420/2800= PS25 series, flange fitting, standard filtered IEC power inlet, twin fused, rated at 4 amperes. L/C circuit version 2, i.e L1 = 2 x 0.7mH, Cx = 1 x 15nF, Cy = 2 x 2.2nF Without bleed resistor or surge protection device fitted, with 2.8mm tabs.
Max. Power Dissipation:		2.5W per fuse.	2.5W per fuse.	
Earth Leakage Current:		<0.35mA (250V, 50Hz).	<0.35mA (250V, 50Hz).	
Temperature Range:		-25°C to +85°C.	-25°C to +85°C.	
Max. Ambient Temp.: (@ Full Load)		40°C (derate linearly to 0A @ 85°C).	40°C (derate linearly to 0A @ 85°C).	
Test Voltage:		2700V d.c. 2 secs. Lines to Earth. 1100V d.c. 2 secs. Live to Neutral.	2700V d.c. 2 secs. Lines to Earth. 1100V d.c. 2 secs. Live to Neutral.	
Approvals:				
Mating Connectors:		PX0587, PX0587/SE, PX0588, PZ0100, PZ0200.	PX0587, PX0587/SE, PX0588, PZ0100, PZ0200.	

IEC POWER INLETS FLANGE AND SNAP FIT (FUSED TWIN)



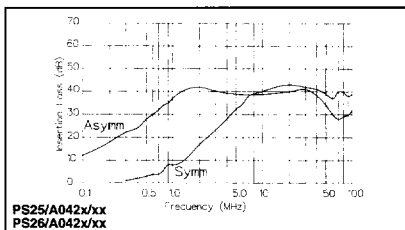
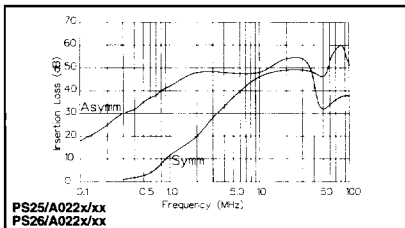
Rating & Version Table

PS25/Axx2x/xxxx & PS26/Axx2x/xxxx

Rating	Version	L1	Cx	Cy
1 AMP	1			
"	2	2 x 1.8mH	2 x 47nF	2 x 2.2nf
"	3			
3 AMP	1			
"	2	2 x 0.7mH	2 x 47nF	2 x 2.2nf

F I L T E R S

Version 2



Certificate No. 7813822