

# MISC. Connectors

Power Cable to  
Chassis

## PA-PA

Examples:

PLUG:	PA	4-5	S	JTB
RECEPTACLE:	PA	4-5	P	J

### PLUG

### RECEPTACLE

#### SERIES

• Molded bodies: PA4 and PA4-5: Diallyl phthalate per MIL-M-14 (GDI-30F or SDG-F). PA10: Polyphenylene sulfide  
 PA = Power connectors | PA = Power connectors

#### NUMBER OF CONTACTS

5 = 5 #12 pin contacts	5 = 5 #12 pin contacts
4-5 = 4 #12 and 5 #16 pin contacts	4-5 = 4 #12 and 5 #16 pin contacts
10 = 10 #12 pin contacts	10 = 10 #12 pin contacts

#### TYPE OF CONTACTS

- Contact Rating: #12 contacts = 23 amps; #16 contacts = 13 amps.
- Socket Contacts: Phosphor bronze, gold plated.
- Pin Contacts: Brass, gold plated.
- Nominal au plating thickness is 20 micro-inches on mating surfaces.

P = Pin, straight, solder cup	S = Socket, straight, open entry, solder cup
PD11 = Pin, straight, dip solder, .172	

• **WARNING:** When interchanging contacts, position of male and female hardware is automatically reversed.

S = Socket, straight, open entry, solder cup	P = Pin, straight, solder cup
	PD11 = Pin, straight, dip solder, .172

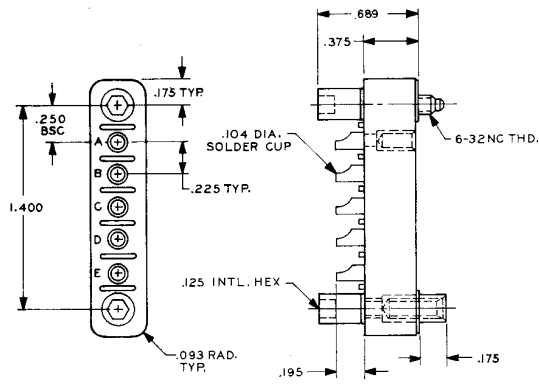
#### TYPE OF HARDWARE

• For hood strain relief, add "H" to "JTL" hardware; Example: PA5SJTLH. See "Options" below.

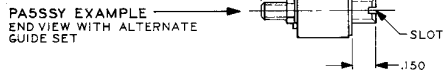
SY = Guide set	SY = Guide set
JT = Turning jackset, 1.054	J = Fixed jackset
JTB = Hex turning jackset, .314	

#### OPTIONS

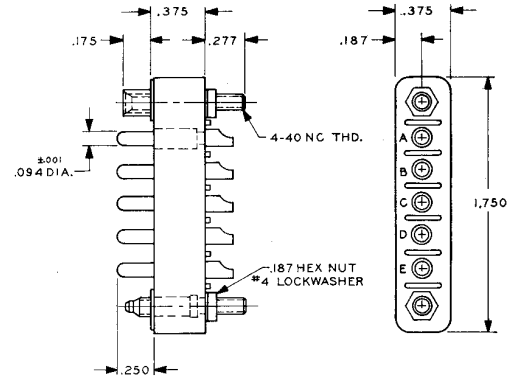
• Hood PA5H for use with PA5 and PA4-5 connectors. Specify JTL hardware when using hood.



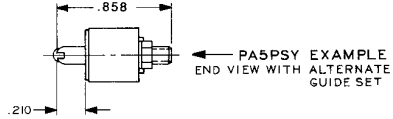
**EXAMPLE:  
PA5SJT**



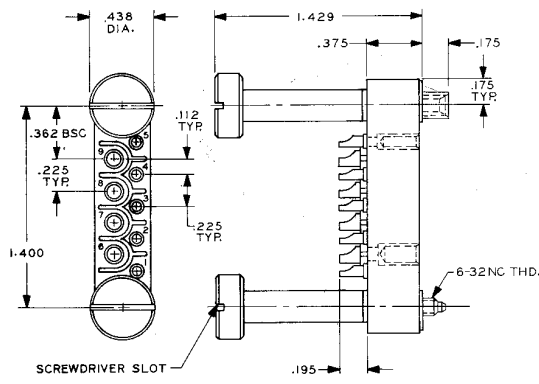
**PA5SSY EXAMPLE  
END VIEW WITH ALTERNATE  
GUIDE SET**



**EXAMPLE:  
PA5PJ**

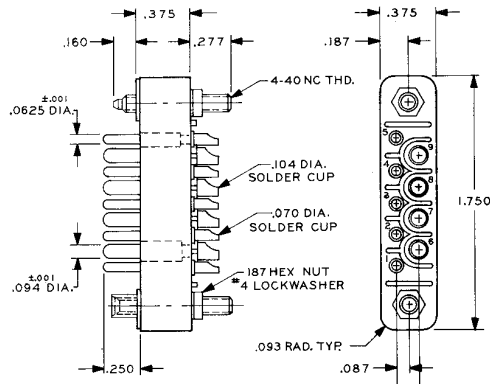


**PA5PSY EXAMPLE  
END VIEW WITH ALTERNATE  
GUIDE SET**

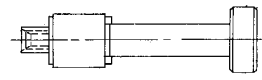


**EXAMPLE:  
PA4-5SJT**

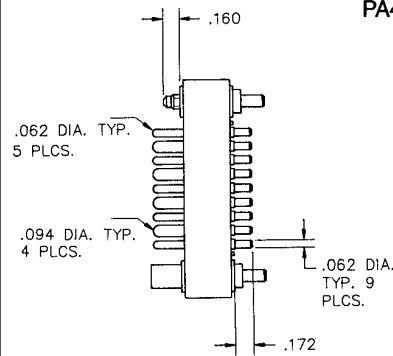
**EXAMPLE:  
PA4-5SJ**



**EXAMPLE:  
PA4-5PJ**



**EXAMPLE:  
PA4-5PJT**



**EXAMPLE:  
PA4-5PD11J**