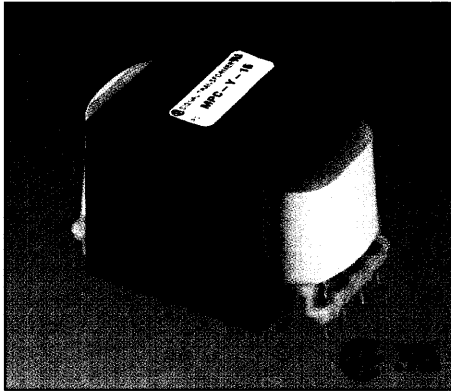


Printed Circuit Triple Output Transformers Printed Circuit Mount

BUY DIRECT

24 HOURS
PHONE

For 5 VDC and ± 12 VDC or ± 15 VDC Regulated Power Supplies



Signal's MPC, DMPC and MPL transformers have all of the performance features of our PC and LP series.

MPC and DMPC Series

General Specifications

- Power – 10 VA and 24 VA
- Dielectric Strength – 1500VRMS Hipot
- Primaries – Single or dual primaries (115V or 115/230V nominal - 50-500 Hz)
Input range (100V to 130V or 200V to 260V - 50/60 Hz)
- Secondaries – Dual complementary outputs (5 VDC with ± 12 VDC or 5 VDC with ± 15 VDC)
- Insulation – Class B insulation (130°C)
- Brackets – Available for 10 & 24 VA sizes (PN 10-BR & 24-BR)

Agency Standards

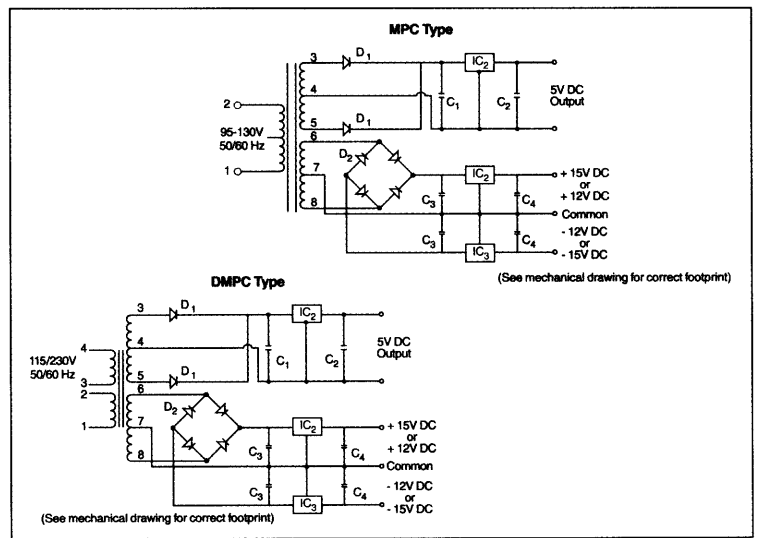
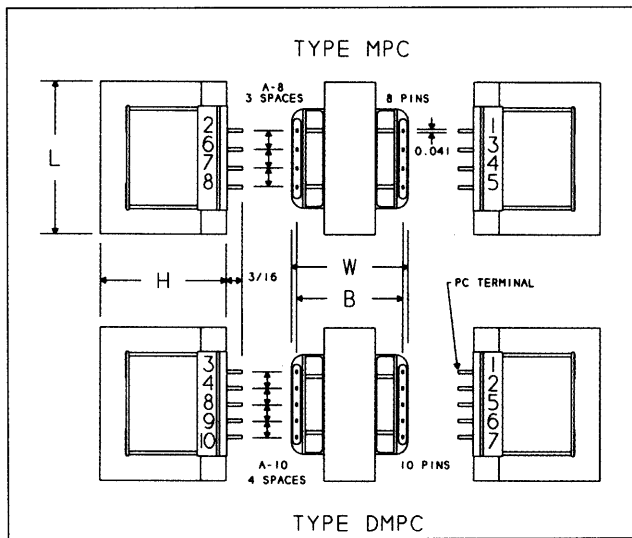
- UL recognized to UL 506 (File #E63829)
- CSA certified to C22.2 #66 (File #LR 51265)

MPC & DMPC TYPES

Part Number Primary 50/60 Hz		DC Output		Size	Suggested Components							
115V (8 Pin)	115/230V (10 Pin)	Regulator I	Regulator II		C ₁	C ₂	C ₃	C ₄	D ₁ (2)	D ₂ (4)	IC ₁ *	IC ₂ *
MPC-X-12	DMPC-X-12	5 VDC 360mA	± 12 VDC 60mA	X	2100MFD 30V	2.7MFD 20V	250MFD 50V	10MFD 20V	1N4001	1N4002	LM341P-5.0	LM326N
MPC-X-15	DMPC-X-15	5 VDC 360mA	± 15 VDC 50mA	X	2100MFD 30V	2.7MFD 20V	250MFD 50V	10MFD 20V	1N4001	1N4002	LM341P-5.0	LM325N
MPC-Y-12	DMPC-Y-12	5 VDC 835mA	± 12 VDC 150mA	Y	4000MFD 20V	2.7MFD 20V	1000MFD 50V	2.7MFD 20V	1N4001	1N4002	LM340K-5.0	LM326N
MPC-Y-15	DMPC-Y-15	5 VDC 835mA	± 15 VDC 130mA	Y	4000MFD 20V	2.7MFD 20V	1000MFD 50V	2.7MFD 20V	1N4001	1N4002	LM340K-5.0	LM325N

*National Semiconductor

(Size)	L	W	H	A-8 (8 Pin)	A-10 (10 Pin)	B	Wgt	Optional Bracket		
								No.	MW	MD
X	1.87" 47.6mm	1.43" 36.5mm	1.62" 41.3mm	.250" 6.4mm	.200" 5.1mm	1.300" 33.0mm	.56 lbs .25 kg	10-BR	1.64" 41.6mm	1.12" 28.6mm
Y	1.62" 41.3mm	2.25" 57.2mm	1.37" 34.9mm	.250" 6.4mm	.200" 5.1mm	2.100" 53.3mm	.75 lbs .34 kg	24-BR	1.37" 34.9mm	2.00" 50.8mm



If you don't see a specific part that meets your requirement, see page 31 for our custom magnetics design data sheet.

Signal Transformer

CALL: 516-239-5777 • FAX: (24hrs) 516-239-7208

500 Bayview Avenue, Inwood, New York 11096