

## STRIPLINE POWER DIVIDERS, 12 WAY - 0°

Power Dividers

Frequency Range (GHz)	Insertion Loss (dB) max.	Isolation (dB) min.	Amplitude Balance (dB) max.	Phase Balance (Deg) max.	VSWR max.	(1) Input Power (watts) max.	P/N
1.8-2.2	1.2	18	0.3	6.0	1.70:1	5	PS12-01-455/1*
3.7-4.2	1.4	18	0.4	8.0	1.80:1	5	PS12-02-455/1*
5.8-6.4	1.6	16	0.5	9.0	1.80:1	5	PS12-03-455/1*
7.2-8.5	1.9	16	0.6	10.0	1.90:1	5	PS12-04-455/1*

\* Available with SMA or N connectors - Specify by adding S or N suffix to P/N

Note: (1) For Load VSWR better than 1.2:1.

## STRIPLINE POWER DIVIDERS, 16 WAY - 0°

Frequency Range (GHz)	Insertion Loss (dB) max.	Isolation (dB) min.	Amplitude Balance (dB) max.	Phase Balance (Deg) max.	VSWR max.	(1) Input Power (watts) max.	P/N
3.7-4.2	1.8	20	0.5	5.0	1.50:1	5	PS16-05-456/1*
5.8-6.4	1.8	22	0.5	5.0	1.60:1	5	PS16-06-456/1*

\* Available with SMA or N connectors - Specify by adding S or N suffix to P/N

Note: (1) For Load VSWR better than 1.2:1.

## STRIPLINE POWER DIVIDERS, 32 WAY - 0°

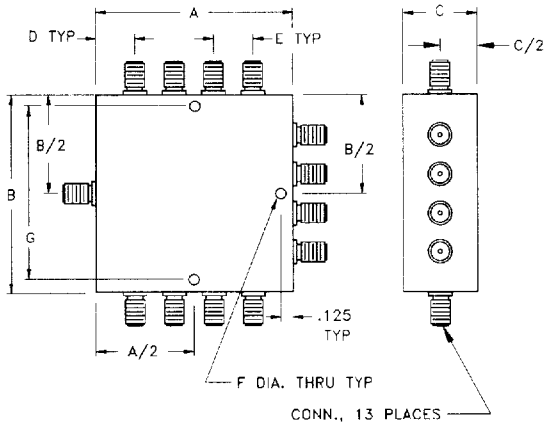
Frequency Range (MHz)	Insertion Loss (dB) max.	Isolation (dB) min.	Amplitude Balance (dB) max.	Phase Balance (Deg) max.	VSWR max.	(1) Input Power (watts) max.	P/N
3.7-4.2	2.5	20	0.8	7.0	1.60:1	5	PS32-05-457/1*
5.8-6.4	2.5	22	0.8	7.0	1.70:1	5	PS32-06-457/1*

\* Available with SMA & N connectors - Specify by adding S or N suffix to P/N

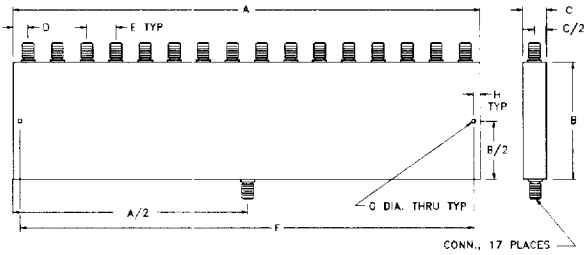
Note: (1) For Load VSWR better than 1.2:1.

# STRIPLINE POWER DIVIDERS

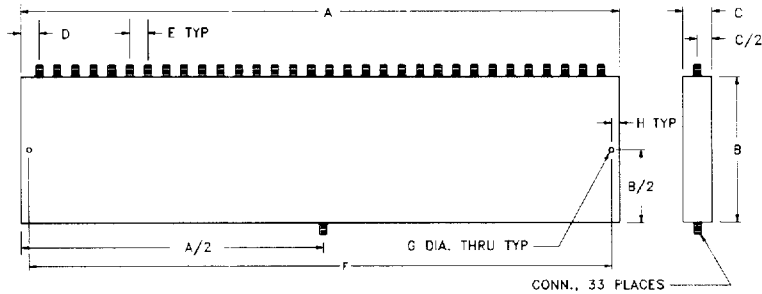
## MULTI WAY - 0°



Outline 455



Outline 456



Outline 457

OUTLINE	CONN.	A	B	C	D	E	F	G	H
455/1S	SMA	3.00	3.00	0.40	.75	0.50	.125	2.75	--
455/1N	N	3.55	4.00	1.00	.50	0.85	.125	3.75	--
456/1S	SMA	6.40	2.85	0.40	.20	0.40	5.90	.149	.250
456/1N	N	16.00	2.90	1.00	.50	1.00	15.50	.149	.250
457/1S	SMA	12.80	3.50	0.40	.20	0.40	12.30	.149	.250
457/1N	N	32.00	3.60	1.00	.50	1.00	31.50	.149	.250