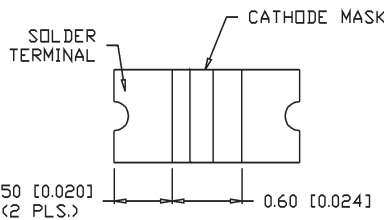
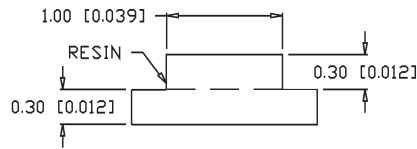
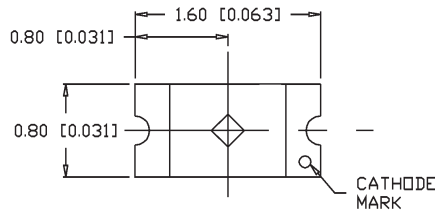


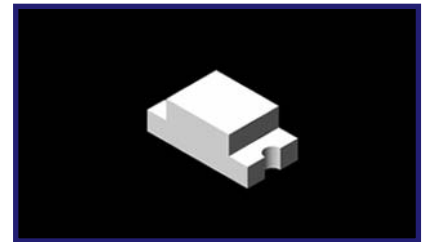


SML-LX0603XW-TR

Half-Moon Solder Terminals



ANODE CATHODE

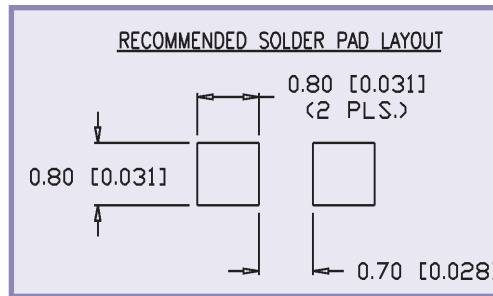


Features/Options

- ▶ Small 0603 Package
- ▶ State-of-the-Art LED Die
- ▶ Wide Angle of Emission
- ▶ High Volume Capacity Production
- ▶ Quick Delivery
- ▶ All Color Choices Available

Applications/Uses

- ▶ Display or Character Backlighting
- ▶ Status Indicators
- ▶ Circuit Fault Indicators
- ▶ Keyboard Post Lighting
- ▶ Medical Diagnostic Instruments



SML-LX0603 Package Style - Super Bright

Half-Moon Solder Terminals

Lumex Part Number	Die Material	Emitted Color	Peak (nm)	Lens	Axial Intensity @ If=20mA	V _f Typ @ If=20mA	V _f Max @ If=20mA	View Angle° 2θ	Reel Size (pcs)	Reflow Profile Pg. 138	Tape Specs Pg. 138
SML-LX0603SIW-TR	AllnGaP	Super High Intensity Red	636	Milky White	60	2.0	2.6	140	4000	Figure 1	Figure A
SML-LX0603SOW-TR	AllnGaP	Super Orange	610	Milky White	60	2.0	2.5	140	4000	Figure 1	Figure A
SML-LX0603SRW-TR	GaAlAs	Super Red	660	Milky White	45	1.7	2.2	140	4000	Figure 1	Figure A
SML-LX0603SUGW-TR	AllnGaP	Super Ultra Green	574	Milky White	45	2.2	2.6	140	4000	Figure 1	Figure A
SML-LX0603SYW-TR	AllnGaP	Super Yellow	590	Milky White	60	2.0	2.5	140	4000	Figure 1	Figure A

SML-LX0603 Package Style - Ultra Bright and White

Half-Moon Solder Terminals

Lumex Part Number	Die Material	Emitted Color	Peak (nm)	Lens	Axial Intensity @ If=20mA	Chromaticity Coordinates		V _f Typ @ If=20mA	V _f Max @ If=20mA	View Angle° 2θ	Reel Size (pcs)	Reflow Profile Pg. 138	Tape Specs Pg. 138
						X	Y						
SML-LX0603USBW-TR	InGaN	Ultra Super Blue	470	Milky White	20	-	-	3.5	4.0	140	4000	Figure 1	Figure A
SML-LX0603UPGW-TR	InGaN	Ultra Pure Green	525	Milky White	45	-	-	3.5	4.0	140	4000	Figure 1	Figure A
SML-LX0603UWW-TR	InGaN	White	-	Yellow Diffused	150	0.3	0.32	3.5	4.0	140	4000	Figure 1	Figure A



USA/Canada +1-800-278-5666
 Europe +49-6081-964380
 Asia +886-3-5821124



www.lumex.com



USA/Canada +1-847-359-8904
 Europe +49-6081-964381
 Asia +886-3-5821154