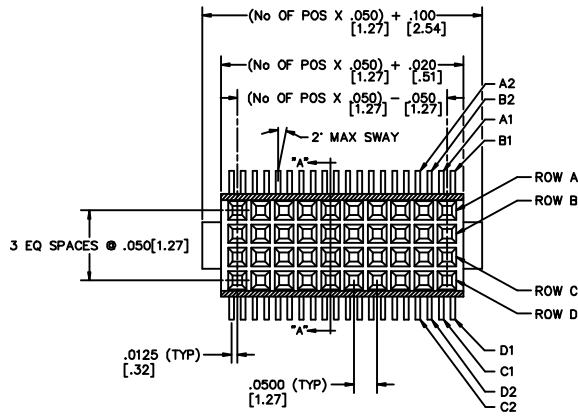


REVISIONS AD

DIMENSIONS ARE IN INCHES		UNLESS OTHERWISE NOTED		TOLERANCES ARE:		TITLE:		DWG NO:	
ONE PLACE DECIMALS ± .1	TWO PLACE DECIMALS ± .01	THREE PLACE DECIMALS ± .005	FOUR PLACE DECIMALS ± .0020	ANGLES ± 5°		.050 X .050 C.L. 4 ROW SOCKET STRIP		FOLC-1XX-X2-XX-Q-XXX-XX	
								SHEET 1 OF 2	



FOLC-1XX-X2-XX-Q-XXX-XX

No. OF POSITIONS
-05 THRU -50

LEAD STYLE
-02: SURFACE MOUNT
-L2: LOW INSERTION FORCE SURFACE MOUNT

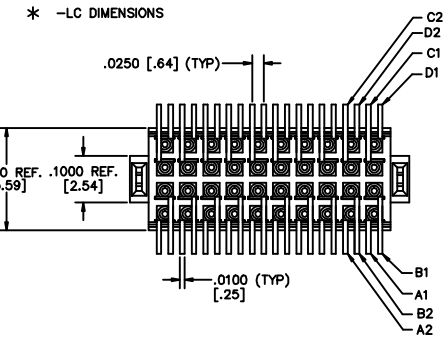
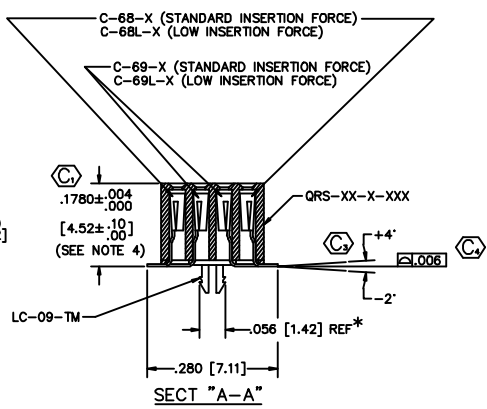
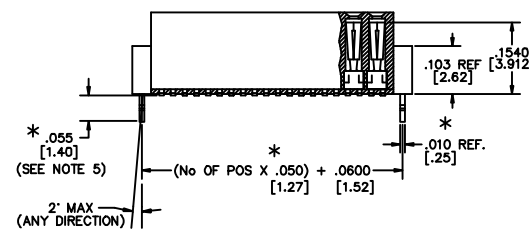
-LC: LOCKING CLIP (FIG: 1)

OPTION
-P: PICK AND PLACE PAD (SEE FIG 3, SHT 2)
-TR: TAPE & REEL
-K: POLYAMIDE FILM PAD (.005 [.13] THICK W/ SILICONE ADHESIVE)(SEE FIG 4, SHT 2) (USE K-500-300)

OPTION
-LC: LOCKING CLIP (SEE FIGURE 1)
-LCR: LOCKING CLIP REVERSED (SEE FIG 2, SHT 2)

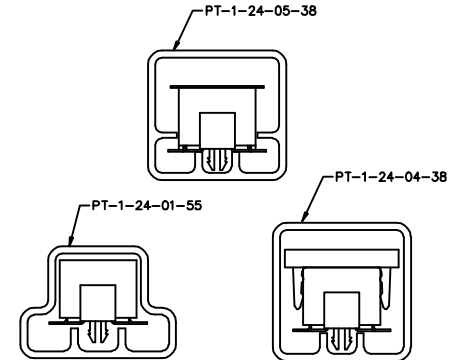
BODY SPECIFICATION
-Q: 4 ROW

PLATING SPECIFICATION
-S: SELECTIVE, .000030 GOLD ON POST WITH TIN ON TAIL
-H: HEAVY GOLD, .000030 GOLD ON POST FLASH GOLD ON TAILS
-SM: SELECTIVE, .000030 GOLD ON POST/MATTE TIN TAILS
-L: LIGHT SELECTIVE, .00010 GOLD ON POST, MATTE TIN TAILS

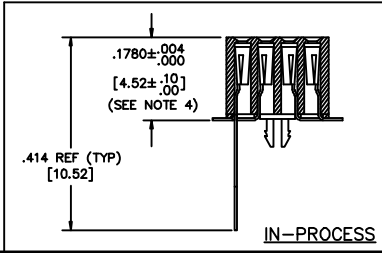


- NOTES:
1. PARTS TO BE PACKAGED IN TUBES.
 2. ROW TO ROW DIMENSION MUST BE WITHIN .002 OF EACH OTHER
 3. (C) REPRESENTS A CRITICAL DIMENSION
 4. MEASURE AT THE BEND, NOT AT THE TIP OF THE CONTACT
 5. THIS DIMENSION TO BE MEASURED FROM TAIL TO LC.

OPTION	PACKAGING TUBE	PLUG
-LC, -LCR	PT-1-24-01-55	TP-24
-P, -P-LC, -P-LCR	PT-1-24-04-38	TP-03
-K, -K-LC, -K-LCR	PT-1-24-05-38	TP-03



PACKAGING VIEW
SCALE .75



MATERIAL:
INSULATOR:
BLACK LIQUID CRYSTAL POLYMER

TERMINAL:
BeCu

PLOT SCALE 1=2

PROPRIETARY NOTE
THIS DOCUMENT CONTAINS INFORMATION CONFIDENTIAL AND PROPRIETARY TO SAMTEC INC. AND SHALL NOT BE REPRODUCED OR TRANSMITTED TO OTHER DOCUMENTS OR DISCLOSED TO OTHERS OR USED FOR ANY PURPOSE OTHER THAN THAT FOR WHICH IT WAS OBTAINED WITHOUT THE EXPRESSED WRITTEN CONSENT OF SAMTEC INC.

samtec

520 PARK EAST BLVD. NEW ALBANY, INDIANA 47150
PHONE (812) 944-6733 P.O. BOX 1147
CODE 55322

MADE BY:
GREG REIDINGER 3-29-93

FOLC-1XX-X2-XX-Q-XXX-XX
SHEET 1 OF 2