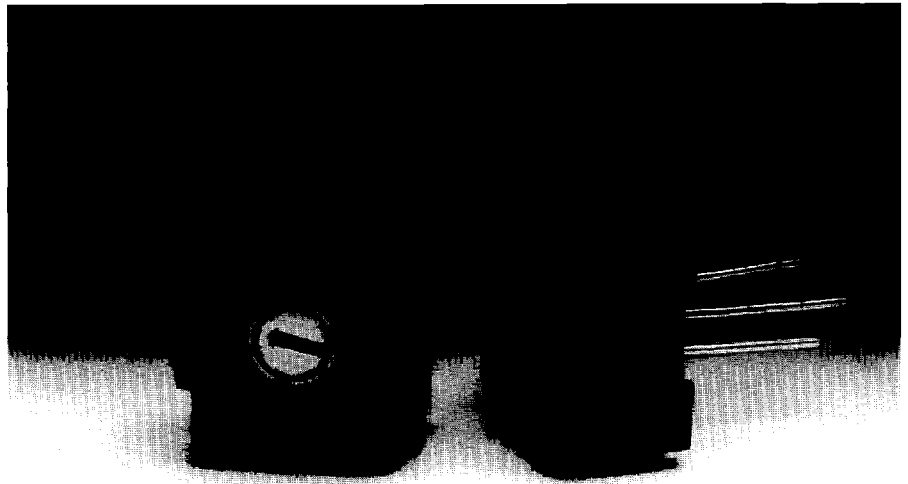


# Series AT-10

## Features of AT10

TOCOS AT10 T-type continuous attenuator is available in 3 attenuations 6.5dB, 10dB, 20dB.

This space saving 11mm square utilizing metal-film technology also provides a wide frequency range and is sealed to withstand wave soldering and immersion process.



## Specifications

### Electrical

**Input Impedance:** 50Ω, 75Ω, 600Ω  
**Max. Attenuation:** 6.5dB, 10dB, 20dB  
**Power Rating:** 0.2W at 70°C  
**Frequency:** DC -380MHZ  
**Dielectric Strength:** 1,000V AC, one minute  
**Insulation Resistance:** 1,000 V DC, 100MΩ Min.

### Mechanical

**Adjustment Travel:** 150° ± 10  
**Torque:** 180gf.cm (2.5 OZ-IN)  
**Stop Strength:** 0.8Kgf.cm (11.1 OZ-IN)  
**Marking:** Trade mark, Impedance max. attenuation, date code

### Environmental

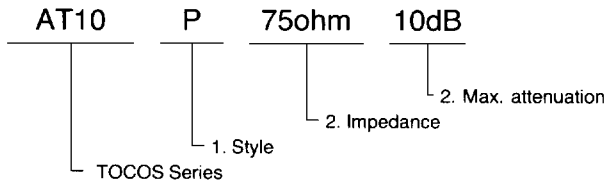
**Temperature Range:** -55°C to +100°C  
**Rotational Life:** 50 cycles, Impedance Change; ± 5% Max.  
**Load Life:** JIS C 6444, 0.2W for 500 hr., Impedance Change; ± 5% Max.  
**Thermal Shock:** MIL-STD-202 Method 107, -55°C to +25 - +100 - +25°C, 5 cycles, Impedance change; ± 2% Max.  
**Resistance to Soldering Heat:** MIL-STD-202 Method 116, 350°C for 3 sec., Impedance Change; ± 2% Max.  
**Vibration:** JIS C 6444, Impedance Change; ± 2% Max.

### 2. Impedance/Attenuation—See “How To Order”

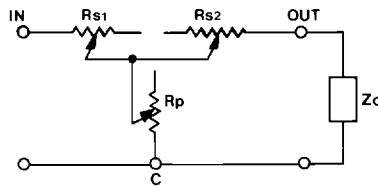
Max. Atten.	Attenuation (dB)			Input Impedance (Ω)	
	Tolerance vs. Rotation (CCW)			Input Impedance	Tolerance
	Max.	50%	Min.		
20dB	± 1.5	± 1.2	1.2 Max.	50Ω, 75Ω, 600Ω	± 12%
10dB	± 1.0	± 0.8	0.6 Max.	50Ω, 75Ω, 600Ω	± 10%
6.5dB	± 0.7	± 0.5	0.4 Max.	50Ω, 75Ω, 600Ω	± 10%

ΔT/R = change in total resistance S.S = setting stability

**How To Order**



**Circuit**



Dimension:  $\frac{\text{in}}{\text{mm}}$

**1. Style—See "How To Order"**

