

# WIREWOUND RESISTORS

RECTANGULAR  
CLAMP MOUNTING TYPE  
SQH (STANDARD TYPE)  
NSQH (NON-INDUCTIVE TYPE)

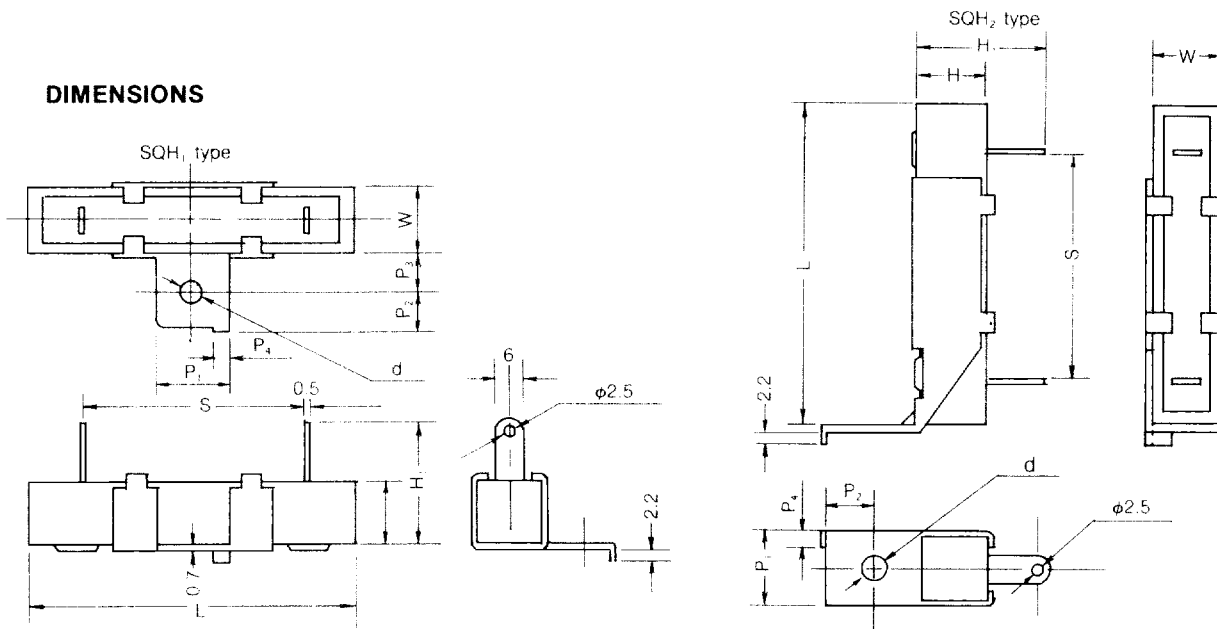
## FEATURE

1. Low Cost
2. Small size, high power capacity.
3. Non-Inductive type up to 50Ω available.
4. Tolerance: 5%, 10%.
5. Completely unflammmable.

## PERFORMANCE

Temperature Coefficient	±300 PPM/°C
Insulation Resistance	> 100 MΩ
Load Life (1,000 hours)	±5% + 0.05Ω
Short-time Overload	±2% + 0.05Ω
Dielectric Withstanding Volt	±2% + 0.05Ω
Moisture Resistance	±5% + 0.05Ω
Shock and Vibration	±1% + 0.05Ω
Effect of Soldering	±2% + 0.05Ω

## DIMENSIONS



Type	Power Rating (W)	Range of Resistance (Ω)	Dimensions (mm)									
			L	H	W	S	H1	P1	P2	P3	P4	d
SQH-10	10	0.1—800	48.0	10.5	10.5	33	19.5	11	6	5.8	2.5	3.8
SQH-15	15	0.1—800	48.0	12.5	12.0	33	20.5	11	6	6.5	3.0	3.8
SQH-20	20	0.1—1K	48.0	12.5	12.0	48	20.5	11	6	6.5	3.0	3.8
SQH-30	30	0.5—1K	63.5	19.0	18.0	56	28.0	18	8	10.0	3.0	4.2
SQH-40	40	1.0—1.5K	90.0	19.0	18.0	71	28.0	18	8	10.0	3.0	4.2

Note: Resistance up to 50Ω maximum for Non-Inductive type

## ORDERING INFORMATION

SQHXX X XXX X  
TYPE TOL. RES. VALUE PACKAGING

TOLERANCE: 5% = J  
10% = K  
PACKAGING: BULK = B