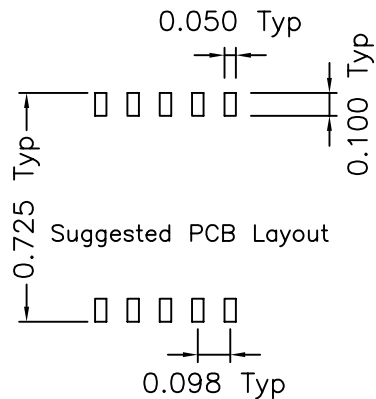
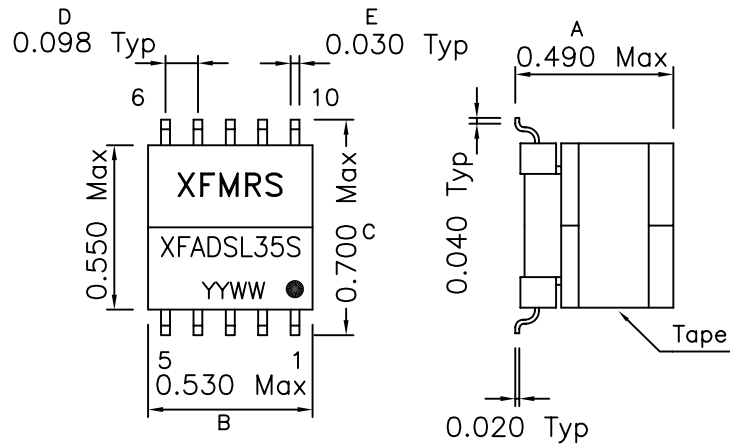
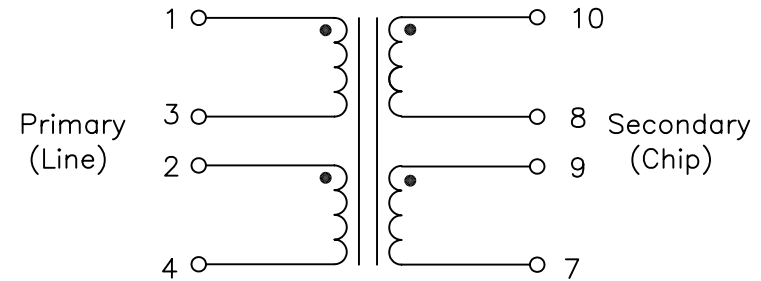


## 1. Mechanical Dimensions:



## 2. Schematic:



## 3. Electrical Specifications:

OCL: (Pins 1-4) 450uH±5% 10KHz, 0.1V  
 Leakage L: (Pins 1-4) 5.5uH Max 100KHz, 0.1V  
 Short Pins 10-7, tie 3-2  
 Impedance Ratio: 100 : 30.9 Ohms  
 Turns Ratio: (1-4):(10-7) 1.8CS:1CS±1%  
 DC Res: (Pins 10-8) 0.250 Ohms Max  
 DC Res: (Pins 9-7) 0.300 Ohms Max  
 DC Res.: (Pins 1-3) 0.800 Ohms Max  
 DC Res.: (Pins 2-4) 0.800 Ohms Max  
 HYPOT: 2000VAC Chip-Line, Wdgs-Core  
 Insertion Loss: 0.3dB±0.2dB @ 100KHz  
 Freq Resp.: ±1.20dB 20KHz to 1.1MHz (Ref 100KHz)  
 Long Bal.: -40dB Min 20KHz to 1.1MHz  
 THD: -95dB Typ 40KHz 2.5V

### Notes:

- Solderability: Leads shall meet MIL-STD-202, Method 208D for solderability.
- Flammability: UL94V-0
- ASTM oxygen index: > 28%
- Insulation System: Class F 155°C. UL file E151556
- Operating Temperature Range: All listed parameters are to be within tolerance from -40°C to +85°C
- Storage Temperature Range: -55°C to +125°C
- Aqueous wash compatible

DOC. REV: A/1

UL1950 approved for the requirements of Supplementary Insulation with 300 working volts. UL file #E165866

<b>XFMRS Inc</b>	Title: Isolation Transformer	
	UNLESS OTHERWISE SPECIFIED	P/N: XFADSL35S
TOLERANCES: .xxx ±0.010 Dimensions in INCH	DWN.	廖玉坤
	CHK.	李清儿
SHEET 1 OF 1	APP.	Joe Huff
		REV. A
		Mar-26-01
		Mar-26-01
		Mar-26-01