

**PLEASE CHECK WWW.MOLEX.COM FOR LATEST PART INFORMATION**

**Part Number:** [0015388097](#)  
**Status:** **Active**  
**Overview:** [cgrid\\_sl\\_products](#)  
**Description:** 2.54mm (.100") C-Grid SL™ Single Row, Female, Version C Receptacle, 9 Circuits

**Documents:**

[3D Model](#) [Product Specification PS-70430 \(PDF\)](#)  
[Drawing \(PDF\)](#) [RoHS Certificate of Compliance \(PDF\)](#)

**Agency Certification**

CSA LR19880  
 UL E29179

**General**

Product Family FFC/FPC Connectors  
 Series [70430](#)  
 Overview [cgrid\\_sl\\_products](#)  
 Product Name SL™

**Physical**

Circuits (Loaded) 9  
 Color - Resin Black  
 Contact Position N/A  
 Durability (mating cycles max) 25  
 Entry Angle Vertical  
 Flammability 94V-0  
 Material - Metal Phosphor Bronze  
 Material - Plating Mating Tin  
 Material - Plating Termination Tin  
 Material - Resin Polyester Alloy  
 Number of Rows 1  
 Orientation Vertical  
 PCB Retention None  
 Packaging Type Tube  
 Pitch - Mating Interface (in) 0.100 In  
 Pitch - Mating Interface (mm) 2.54 mm  
 Plating min: Mating (µin) 150  
 Plating min: Mating (µm) 3.75  
 Plating min: Termination (µin) 75  
 Plating min: Termination (µm) 1.875  
 Polarized to PCB No  
 Stackable Yes  
 Temperature Range - Operating -40°C to +105°C  
 Termination Interface: Style IDT or Pierce  
 Wire/Cable Type FFC/FPC

**Electrical**

Current - Maximum per Contact 1A, 2A  
 Voltage - Maximum 250V

**Material Info**

Old Part Number 70430-0043

**Reference - Drawing Numbers**

Product Specification PS-70430  
 Sales Drawing SDA-70430-0036-0059

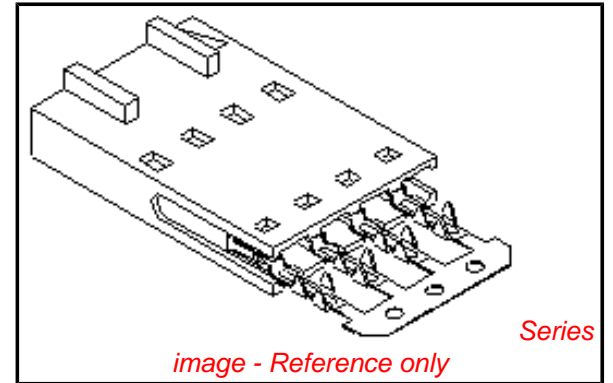


image - Reference only

**EU RoHS**

**ELV and RoHS  
 Compliant  
 REACH SVHC  
 Not Reviewed  
 Halogen-Free  
 Status**

**China RoHS**



**Need more information on product  
 environmental compliance?**

Email [productcompliance@molex.com](mailto:productcompliance@molex.com)  
 For a multiple part number RoHS Certificate of  
 Compliance, [click here](#)

Please visit the [Contact Us](#) section for any  
 non-product compliance questions.

**Search Parts in this Series**

[70430Series](#)

**Mates With**

70544, 70546 straight and 70554, 70556  
 right angle polarized headers

**Application Tooling | FAQ**

*Tooling specifications and manuals are  
 found by selecting the products below.  
 Crimp Height Specifications are then  
 contained in the Application Tooling  
 Specification document.*

**Global**

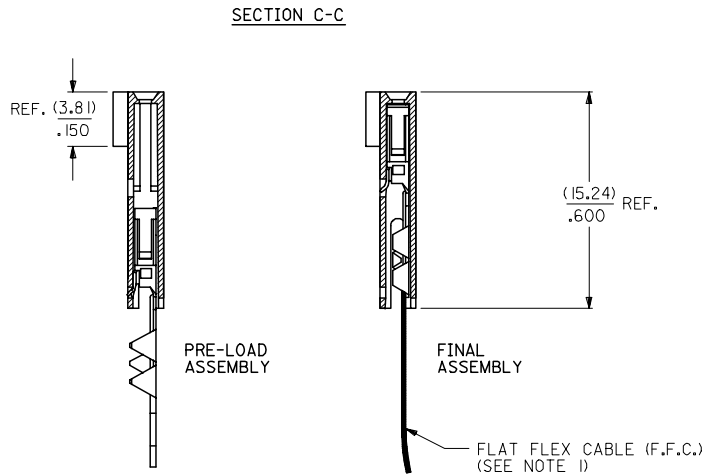
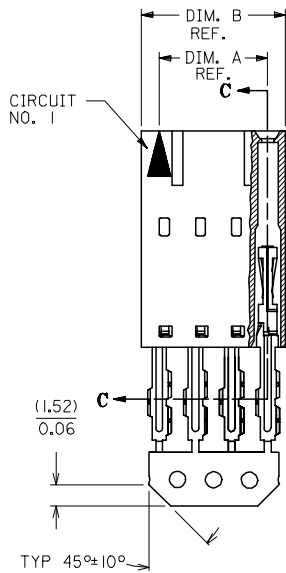
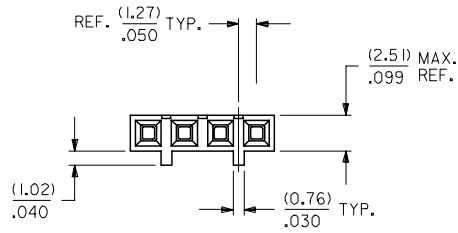
| Description                            | Product #                  |
|--|----------------------------|
| Manual Ribbon Cable Cutter Hand Tool   | <a href="#">0638170100</a> |
| Tool Kit for Standard Manual Press FFC | <a href="#">0622007400</a> |
| Standard Manual Press for FFC          | <a href="#">0622007800</a> |
| TM-42™ FFC and SL™ Termination Kit     | <a href="#">0622018700</a> |

TM-42™ FFC and 0622020800  
SL™ Press and  
Termination Kit for  
110v applications

This document was generated on 05/18/2010

**PLEASE CHECK [WWW.MOLEX.COM](http://WWW.MOLEX.COM) FOR LATEST PART INFORMATION**

"C" - OPTION



- NOTES:**
- 1) PRE LOADED ASSEMBLY TO BE USED WITH (0.30)/.012 MAX. THICK FLAT FLEX CABLE WITH (1.57)/.062 WIDE COPPER CONDUCTORS ON (2.54)/.100 CENTERS OR, (0.13)/.005 - (0.28)/.011 THICK MYLAR WITH (1.02)/.040 - (1.65)/.065 WIDE SILVER INK CONDUCTORS ON (2.54)/.100 CENTERS.
  - 2) STANDARD PACKING PER PK70873-0001 SHALL BE USED.
  - 3) SEE CHART FOR CIRCUIT SIZES, 'A' AND 'B' DIMENSIONS.
  - 4) TWO (2) CIRCUIT ASSEMBLIES SUPPLIED AS GROUPED PAIRS.
  - 5) PART MATES WITH (0.64)/.025 SQ. PINS, (8.13)/.320 TO (5.08)/.200 LONG ON (2.54)/.100 CENTERS.
  - 6) REFER TO SDA-70430-\*\*\*\* (SHEET 3) FOR MINOR VARIATIONS TO "G" OPTION HOUSINGS.
  - 7) PARTS CONFORM TO CLASS B OF COSMETIC SPECIFICATION PS-45499-002.

HOUSING MATERIAL: GLASS FILLED POLYSTER, UL 94V-0.  
 TERMINAL MATERIAL: PHOSPHOR BRONZE.  
 PLATING: TIN - .000150 MINIMUM TIN OVER  
 .000050 MINIMUM NICKEL PLATE.

| CONTACT PLATING | COLOR CODE |
|-----------------|------------|
| TIN             | NONE       |
| 15 GOLD         | YELLOW     |
| 30 GOLD         | RED        |

| CKT. SIZE | EDP. NO.    | ENG. NO.   | A             | B             |
|-----------|-------------|------------|---------------|---------------|
| 2         | 015-38-8027 | 70430-0036 | (2.54) .100   | (5.05) .199   |
| 3         | 015-38-8037 | 70430-0037 | (5.08) .200   | (7.59) .299   |
| 4         | 015-38-8047 | 70430-0038 | (7.62) .300   | (10.13) .399  |
| 5         | 015-38-8057 | 70430-0039 | (10.16) .400  | (12.67) .499  |
| 6         | 015-38-8067 | 70430-0040 | (12.70) .500  | (15.21) .599  |
| 7         | 015-38-8077 | 70430-0041 | (15.24) .600  | (17.75) .699  |
| 8         | 015-38-8087 | 70430-0042 | (17.78) .700  | (20.29) .799  |
| 9         | 015-38-8097 | 70430-0043 | (20.32) .800  | (22.83) .899  |
| 10        | 015-38-8107 | 70430-0044 | (22.86) .900  | (25.37) .999  |
| 11        | 015-38-8117 | 70430-0045 | (25.40) 1.000 | (27.91) 1.099 |
| 12        | 015-38-8127 | 70430-0046 | (27.94) 1.100 | (30.45) 1.199 |
| 13        | 015-38-8137 | 70430-0047 | (30.48) 1.200 | (32.99) 1.299 |
| 14        | 015-38-8147 | 70430-0048 | (33.02) 1.300 | (35.53) 1.399 |
| 15        | 015-38-8157 | 70430-0049 | (35.56) 1.400 | (38.07) 1.499 |
| 16        | 015-38-8167 | 70430-0050 | (38.10) 1.500 | (40.61) 1.599 |
| 17        | 015-38-8177 | 70430-0051 | (40.64) 1.600 | (43.15) 1.699 |
| 18        | 015-38-8187 | 70430-0052 | (43.18) 1.700 | (45.69) 1.799 |
| 19        | 015-38-8197 | 70430-0053 | (45.72) 1.800 | (48.23) 1.899 |
| 20        | 015-38-8207 | 70430-0054 | (48.26) 1.900 | (50.77) 1.999 |
| 21        | 015-38-8217 | 70430-0055 | (50.80) 2.000 | (53.31) 2.099 |
| 22        | 015-38-8227 | 70430-0056 | (53.34) 2.100 | (55.85) 2.199 |
| 23        | 015-38-8237 | 70430-0057 | (55.88) 2.200 | (58.39) 2.299 |
| 24        | 015-38-8247 | 70430-0058 | (58.42) 2.300 | (60.93) 2.399 |
| 25        | 015-38-8257 | 70430-0059 | (60.96) 2.400 | (63.47) 2.499 |

|  |                               |                                       |                       |   |                    |  |                      |                        |  |  |  |
|--|-------------------------------|---------------------------------------|-----------------------|---|--------------------|--|----------------------|------------------------|--|--|--|
| ADD TOLERANCES<br>FC NO: UCP2007-2849<br>DRAWN: JORGAN 2007/05/18<br>CHKD: MS BARRA 2007/05/21<br>APPR: SMILLER 2007/05/21 | QUALITY SYMBOLS<br>▽=0<br>▽=0 | GENERAL TOLERANCES (UNLESS SPECIFIED) |                       | DIMENSION STYLE<br>MM/IN  |                    | SCALE<br>4:1   | DESIGN UNITS<br>INCH | THIRD ANGLE PROJECTION |  |  |  |
|  |                               | 4 PLACES ± --- ± ---                  | 3 PLACES ± --- ± .010 | DRAWN BY<br>RAS   | DATE<br>1986/07/21 | TITLE<br>ASSEMBLY, CONNECTOR FFC FEMALE SINGLE ROW (2.54)/.100 |                      |                        |  |  |  |
|  |                               | 2 PLACES ± 0.25 ± .015                | 1 PLACE ± 0.38 ± ---  | CHECKED BY<br>WAZ   | DATE<br>1986/07/21 | MATERIAL NO.<br>SDA-70430-0036-0059                            |                      |                        |  |  |  |
|  |                               | ANGULAR ±1/2°                         |                       | APPROVED BY<br>MJM  | DATE<br>1986/07/21 | SHEET NO.<br>1 OF 1  |                      |                        |  |  |  |
| DRAFT WHERE APPLICABLE MUST REMAIN WITHIN DIMENSIONS   |                               | SEE TABLE                             |                       | THIS DRAWING CONTAINS INFORMATION THAT IS PROPRIETARY TO MOLEX INCORPORATED AND SHOULD NOT BE USED WITHOUT WRITTEN PERMISSION |                    |  |                      |                        |  |  |  |