



P-Channel 100-V (D-S) MOSFET

CHARACTERISTICS

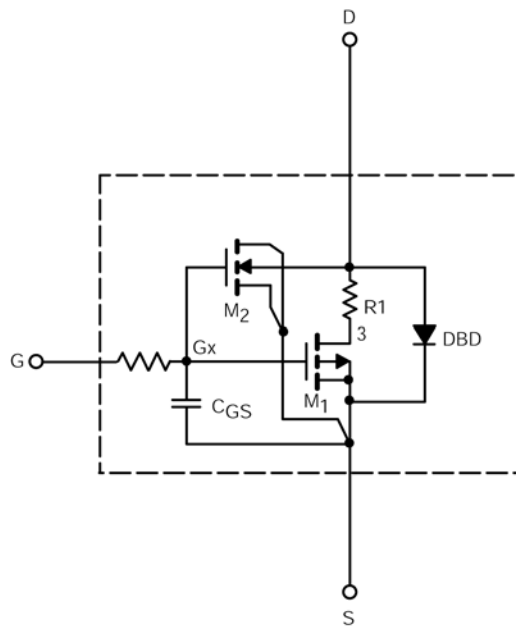
- P-Channel Vertical DMOS
- Macro Model (Subcircuit Model)
- Level 3 MOS
- Apply for both Linear and Switching Application
- Accurate over the -55 to 125°C Temperature Range
- Model the Gate Charge, Transient, and Diode Reverse Recovery Characteristics

DESCRIPTION

The attached spice model describes the typical electrical characteristics of the p-channel vertical DMOS. The subcircuit model is extracted and optimized over the -55 to 125°C temperature ranges under the pulsed 0-V to 10-V gate drive. The saturated output impedance is best fit at the gate bias near the threshold voltage.

A novel gate-to-drain feedback capacitance network is used to model the gate charge characteristics while avoiding convergence difficulties of the switched C_{gd} model. All model parameter values are optimized to provide a best fit to the measured electrical data and are not intended as an exact physical interpretation of the device.

SUBCIRCUIT MODEL SCHEMATIC



This document is intended as a SPICE modeling guideline and does not constitute a commercial product data sheet. Designers should refer to the appropriate data sheet of the same number for guaranteed specification limits.

SPICE Device Model SUM90P10-19L



Vishay Siliconix

SPECIFICATIONS (T _J = 25°C UNLESS OTHERWISE NOTED)					
Parameter	Symbol	Test Condition	Simulated Data	Measured Data	Unit
Static					
Gate Threshold Voltage	V _{GS(th)}	V _{DS} = V _{GS} , I _D = -250 μA	1.9		V
On-State Drain Current ^a	I _{D(on)}	V _{DS} = -5 V, V _{GS} = -10 V	313		A
Drain-Source On-State Resistance ^a	r _{DS(on)}	V _{GS} = -10 V, I _D = -20 A	0.0157	0.0156	Ω
		V _{GS} = -4.5 V, I _D = -15 A		0.0173	
Forward Voltage ^a	V _{SD}	V _{DS} = -15 V, I _F = -20 A	0.88	0.80	V
Dynamic^b					
Input Capacitance	C _{iss}	V _{DS} = -50 V, V _{GS} = 0 V, f = 1 MHz	10710	11100	pF
Output Capacitance	C _{oss}		556	700	
Reverse Transfer Capacitance	C _{riss}		1214	1690	
Total Gate Charge ^c	Q _g	V _{DS} = -50 V, V _{GS} = -10 V, I _D = -90 A		217	nC
			117	97	
Gate-Source Charge ^c	Q _{gs}	V _{DS} = -50 V, V _{GS} = -4.5 V, I _D = -90 A	42	42	
Gate-Drain Charge ^c	Q _{gd}		51	51	

Notes

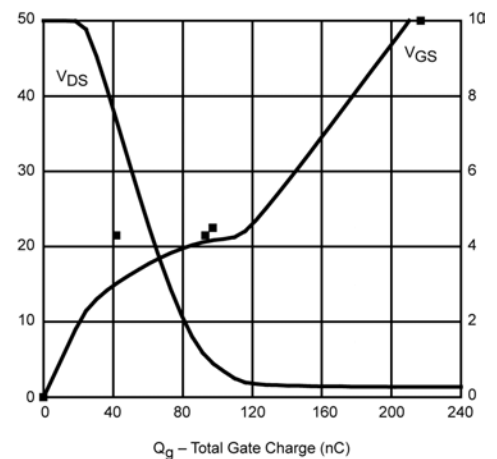
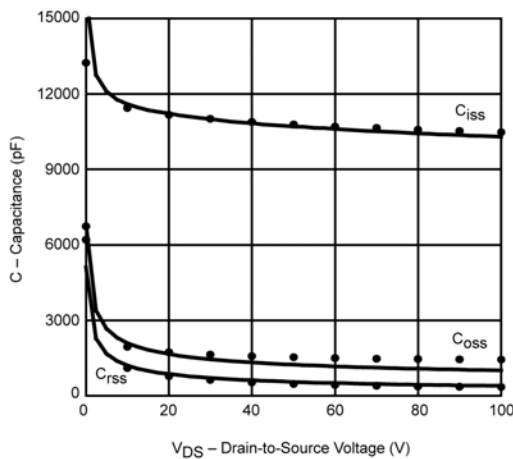
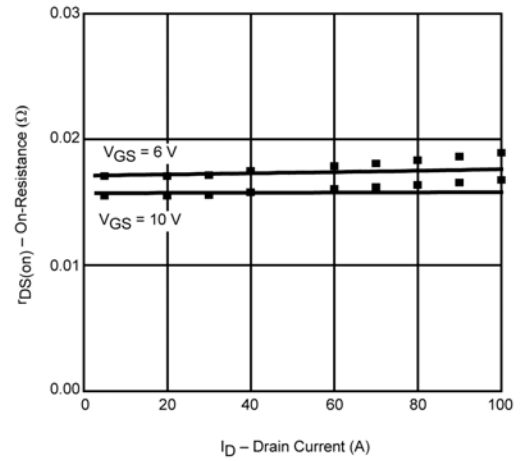
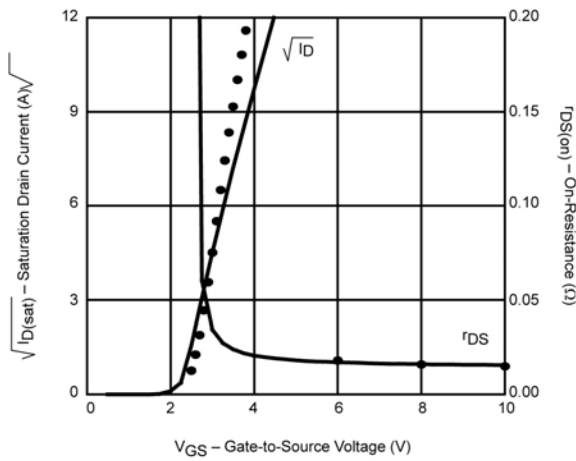
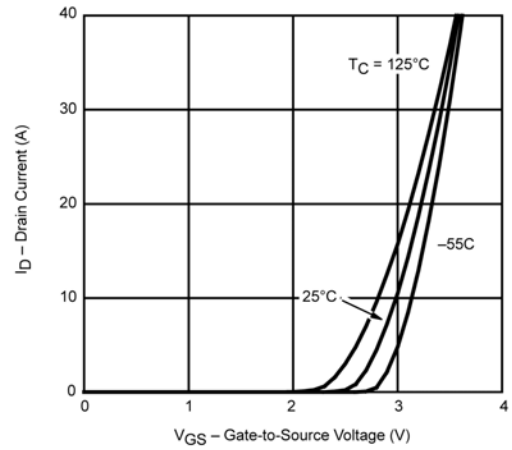
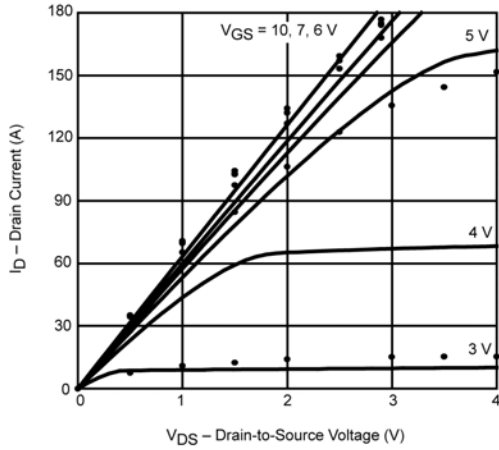
- Pulse test; pulse width ≤ 300 μs, duty cycle ≤ 2%.
- Guaranteed by design, not subject to production testing.
- Independent of operating temperature.



SPICE Device Model SUM90P10-19L

Vishay Siliconix

COMPARISON OF MODEL WITH MEASURED DATA ($T_J=25^\circ\text{C}$ UNLESS OTHERWISE NOTED)



Note: Dots and squares represent measured data.