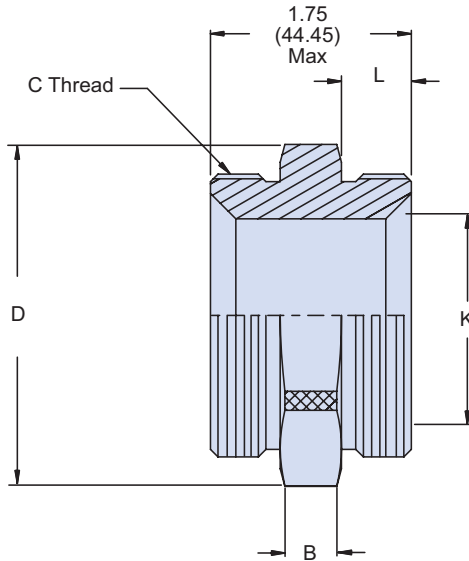


M24758 - 23 C

 Basic No. _____
 Conduit Size Code, Table I _____

APPLICATION NOTES

1. Assembly identified with manufacturer's code identification number (Glenair, part number and classification code 490).
2. The M24758-22 adapter couples connectors listed in table II to M24758-2, M24758-3 or M24758-4 series fittings.
3. Material / Finish:
Adapter, coupling nut, 316 / electroless nickel, matte finish.
4. Metric dimensions (mm) are indicated in parentheses.
5. See M24758-2, -3, -4 torque values for C thread.

TABLE I

CONDUIT SIZE CODE	C CLASS - 2A THREAD	B ± .06 (1.52) DIM	D DIA REF	L +.03 (.76) -.00	K DIA MIN
A	.438-28 UNEF	.50 (12.70)	.88 (22.35)	.21 (5.25)	.245 (6.22)
B	.688-24 UNEF	.56 (14.22)	1.13 (28.70)	.25 (6.35)	.495 (12.57)
C	.938-20 UNEF	.62 (15.75)	1.38 (35.05)	.31 (7.87)	.745 (18.92)
D	1.250-18 UNEF	.62 (15.75)	1.69 (42.93)	.37 (9.40)	.995 (25.27)
E	1.563-18 UNEF	.68 (17.27)	2.00 (50.80)	.37 (9.40)	1.245 (31.62)
F	1.875-16 UN	.68 (17.27)	2.31 (58.67)	.43 (10.92)	1.495 (37.97)
G	2.375-16 UN	.75 (19.05)	2.94 (74.68)	.43 (10.92)	1.995 (50.67)
H	2.875-16 UN	.75 (19.05)	3.44 (87.38)	.43 (10.92)	2.495 (63.37)
J	.563-24 UNEF	.50 (12.70)	.94 (23.88)	.25 (6.35)	.370 (9.40)
K	.813-20 UNEF	.56 (14.22)	1.19 (30.23)	.31 (7.87)	.620 (15.75)
L	3.375-16 UN	.75 (19.05)	3.94 (100.08)	.43 (10.92)	2.995 (76.07)