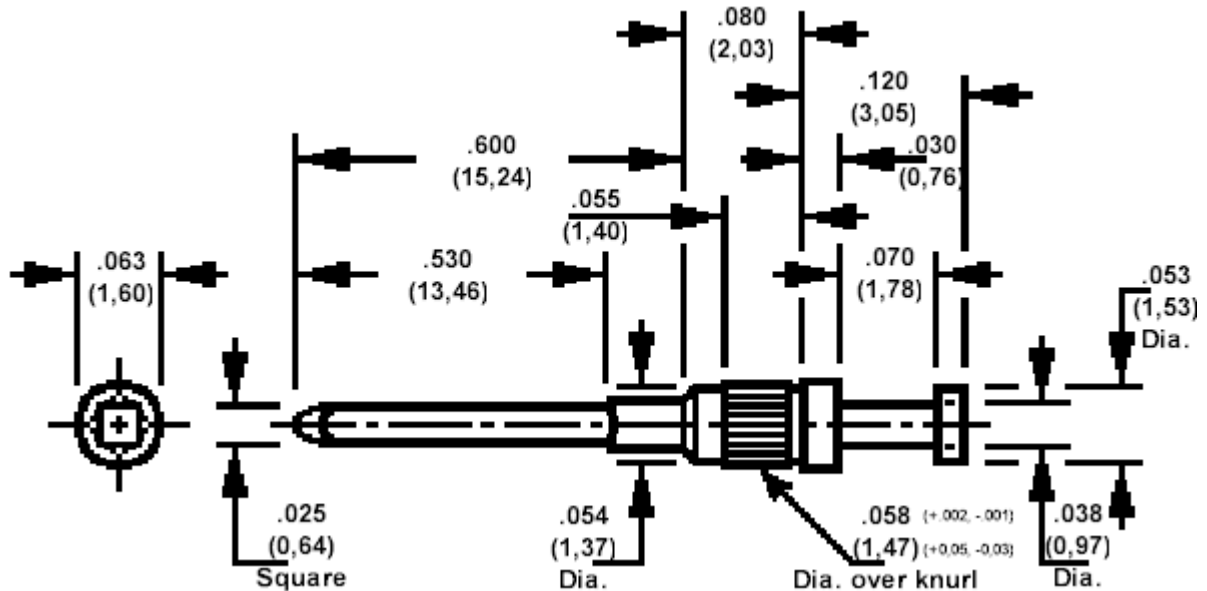


## 155-3866, Wire Wrap Pin - 3 wrap, Turned, .055 (1,40) Mounting Hole (#54 Drill)



For Board thickness .062 (1,57) or greater

How to order code  
155-3866-01-XX-00  
 Basic Part No (XX = Finish)

Component	Material	Finish (XX)	
		-03	-04
Wire Wrap Pin	Brass	Gold	Electro Tin

Mechanical tolerance unless otherwise stated  $\pm .005(0,13)$