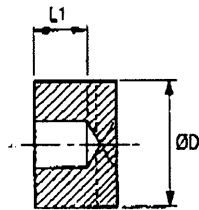


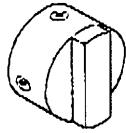
7075558
7075923

OLDHAM LATERAL OFFSET COUPLERS

Blind hubs



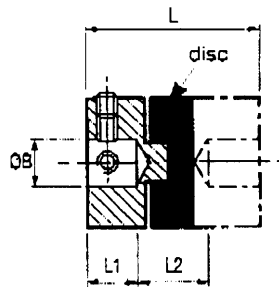
Controlled bore depth L1 provides a register when pre-assembling hubs to shafts



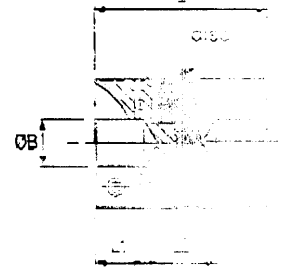
Set screw style



Clamp style

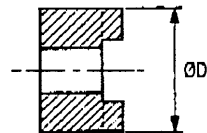


Refs. 232, 243
Set screw style

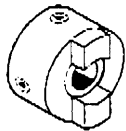


Refs. 234, 235, 245
Clamp style

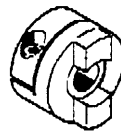
Thro' hubs



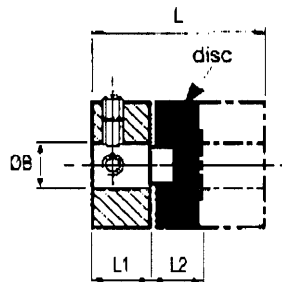
Thro' bores allow disc replacement without disturbing shaft alignment



Set screw style



Clamp style

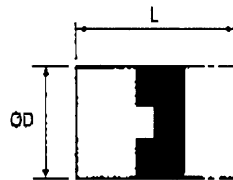
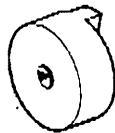


Refs. 450, 454
Set screw style



Refs. 452, 453, 456
Clamp style

Blank hubs



User-adaptable for special needs, e.g. fitting within tubes. Blank hubs are supplied centred with no provision for fastening. External dimensions identical with blind hubs.

Coupler size	Complete hub ref.	OD	Length
06	231.09.00	10.0	10.0
09	231.09.00	12.0	12.0
13	231.13.00	16.0	16.0
19	231.19.00	20.0	20.0
25	231.25.00	25.0	25.0
33	230.33.00	33.0	33.0
41	231.41.00	41.0	41.0

Standard discs (larger sizes are webbed)



Acetal - High torsional stiffness, good bearing properties, long backlash-free life.

Nylon 11 - Resilient, isolates noise & vibration. Performance approximately 25% that of acetal disc.

HOW TO ORDER

Combine the HUB REF. from the Main Table with the BORE REF. from the Bores Table, e.g. **452H25.26**

Hub ref. _____
Bore ref. _____

Order discs separately from the Main Table, e.g. **236.25**

Disc ref. _____

ORDER 2 HUBS + 1 DISC PER COUPLER

Thro' bored discs



Thro' bored discs allow shafts to near-butt, standard thro' hole diameter = $\text{OD} \times 0.5$. To order, add suffix 'T' to order code, e.g., **236.25T**

Other thro' hole diameters are manufactured to order. Specify the disc ref. and thro' hole diameter. This should equal the larger shaft diameter + 2 x max radial error.

Note that thro' bored discs reduce torsional stiffness.

HOW TO INSTALL

Correct installation is important for long life and smooth operation. See page 17 for details.

