

# Covered Blocks

with screw terminals and wire protection\*


# Distribution strips for

# Faston and screw terminals

1 to 24 pole

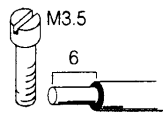
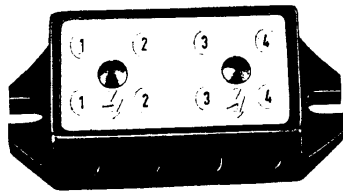
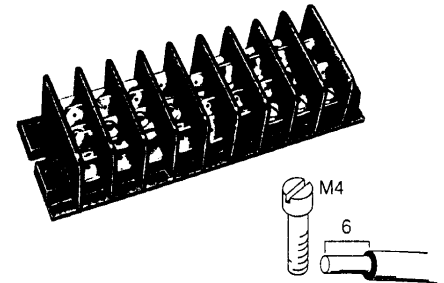
DIN VDE 0110/01.89 500 V/6 kV/3  
4 mm<sup>2</sup> single core / 2.5 mm<sup>2</sup> finely-stranded

DIN VDE 0110/01.89  
EN60335-1: 1988/DIN VDE 0700 T1/12.91

Approvals:   
Rated voltage according to DIN VDE 0110/01.89 500 V/6 kV/3  
Rated cross section:  
4 mm<sup>2</sup> single core  
2.5 mm<sup>2</sup> finely stranded

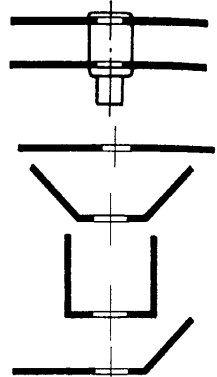
Materials:  
Insulating component - moulded plastic type 150, creepage resistant  
Terminal housing and cover mounting screws - brass with nickel plating

UL-Data  
CSA-Data  
Approvals:  
Materials:  
Insulating Polyamide 6 natural  
Continuous temperature 100 °C  
Continuous temperature 125 °C according to UL 746 B  
Transient thermal load 170 °C  
Creepage resistance according to DIN IEC 112 CTI > 600  
Ball thrust test at 125 °C  
Glow wire test at 850 °C  
Creepage current test PTI 250  
Fast on tabs, terminal housing and threaded nuts - brass with nickel plating  
terminal clips and spring washers - galvanised steel and chrome plated  
Rivets: copper

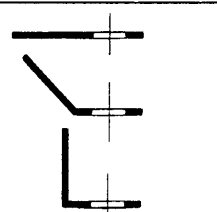


With these distribution strips, up to three faston tab components can be mounted on top of each other. That produces six flat blade terminals per pole. The individual metal components are first of all rivetted to each other and then connected using the insulating component. The screw terminals can be designed according to the diagrams. The faston tab with screw terminals are rated up to a current of 16A in accordance with EN 60335-1: 1988/DIN VDE 0700 1/12.91.  
Special overview leaflets are available to aid the design of distribution terminals. With the help of these leaflets a complete distribution terminal with precise dimensions can be assembled. The price for your choice of combination can be obtained on request.  
These distribution terminals are suitable for extremely harsh conditions in accordance with EN 60335-1: 1988/DIN VDE 0700 T1/12.91.

Double-ended faston tab

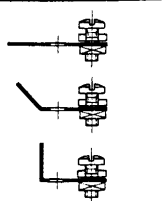


Single ended faston tab



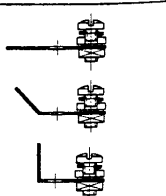
Single ended faston tab with terminal clip  
M4 x 8 DIN 85

Thread height of nut 2.5 mm

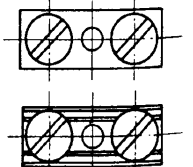


Single ended faston tab with terminal clip, spring washer and terminal screw  
M4 x 8 DIN 85

Thread height of nut 2.5 mm



B 4 DIN 41000 faston tabs  
R 4 DIN 41000



Connecting comb assembly for copper screw  
Terminal 2 to 24 pole

Legend plate, laminate paper 2061, 1 to 24 pole

PVC marker plate 1 to 24 pole



Pole type	Pole no.			
2 KBD 1/2 KR	42	28.121.0240.0	50	
3 KBD 1/3 KR	54	28.121.0340.0	40	
4 KBD 1/4 KR	66	28.121.0440.0	30	
5 KBD 1/5 KR	78	28.121.0540.0	25	
6 KBD 1/6 KR	90	28.121.0640.0	20	
7 KBD 1/7 KR	102	28.121.0740.0	20	
8 KBD 1/8 KR	114	28.121.0840.0	20	
10 KBD 1/10 KR	138	28.121.1040.0	15	
12 KBD 1/12 KR	162	28.121.1240.0	15	

