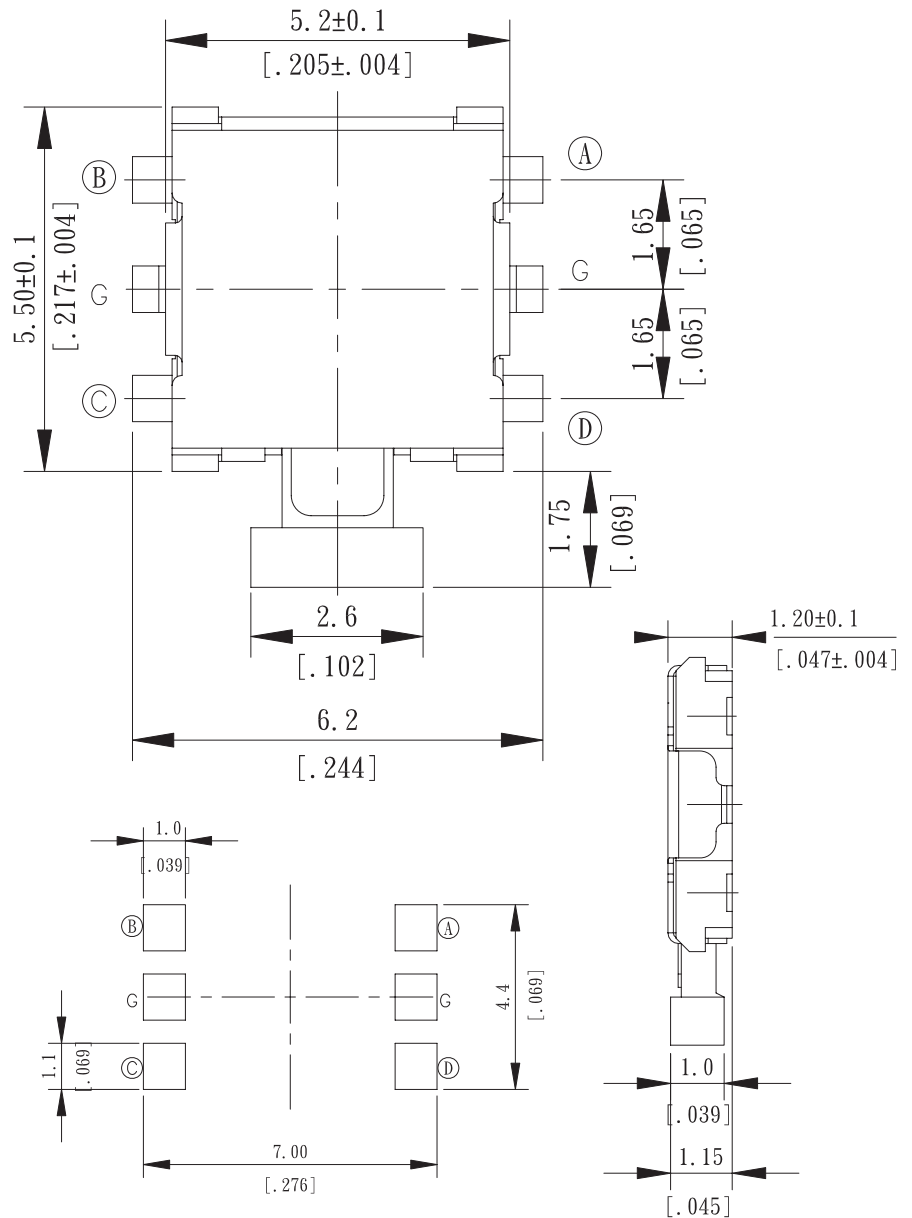
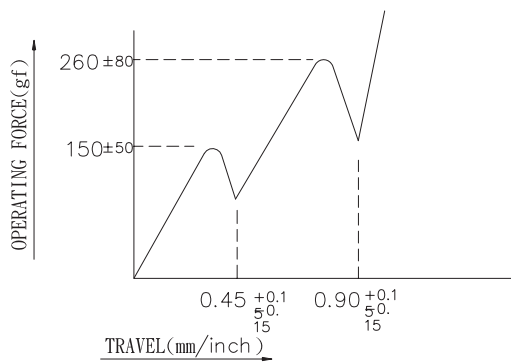
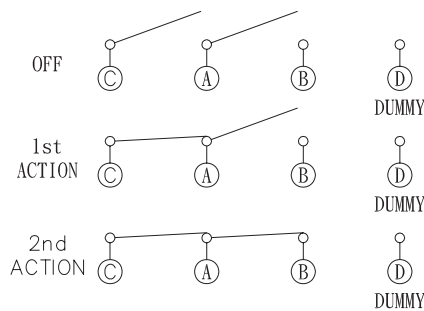
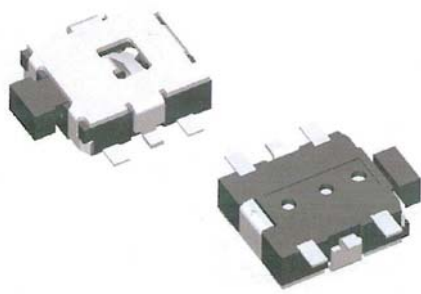


# Multi-Direction Switches

## Right Angle Halogen-Free Double Action Switches

MB9 Series



GENERAL TOLERANCES MAX:  $\pm 0.2$ mm.

### How to order:



#### 1 TERMINALS:

S SMT Terminal Type

#### 2 PACKAGE:

TR Tape & Reel

Note:

> General Tolerance:  $\pm 0.2$ mm  
> Unit in mm and inch (bracketed)

### SPECIFICATION:

Br < 900 ppm  
Cl < 900 ppm  
Br+Cl < 1500 ppm

#### MECHANICAL

Mechanical Life: 100,000 cycles  
Operation Force: 1<sup>st</sup>  $150 \pm 50$ gf  
2<sup>nd</sup>  $260 \pm 80$ gf

Stroke: 1<sup>st</sup>  $0.45 \pm 0.15$ mm  
2<sup>nd</sup>  $0.90 \pm 0.15$ mm

Operation Temperature Range:  $-25^{\circ}\text{C}$  to  $+70^{\circ}\text{C}$   
Storage Temperature Range:  $-30^{\circ}\text{C}$  to  $+80^{\circ}\text{C}$

#### ELECTRICAL

Electrical Life: 100,000 cycles  
Switching Rating: 50mA, 12VDC  
Contact Resistance: 100m $\Omega$  max.  
Insulation Resistance: 100m $\Omega$  min. at 100VDC  
Dielectric Strength: 250VAC/1 minute  
Contact Arrangement: 1 pole 2 throw

# Multi-Direction Switches

## Right Angle Halogen-Free Double Action Switches

MB9 Series

### MATERIAL

Halogen-free materials.  
 Terminal: Brass, with Silver Plating  
 Base: High-Temp Thermoplastic LCP UL 94V-0  
 Color: Black  
 Stem: High-Temp Thermoplastic NYLON UL 94V-0  
 Color: Black  
 Suppressor: Stainless Steel  
 Spring: Stainless Steel  
 Tape: Kapton  
 Cover: Stainless Steel

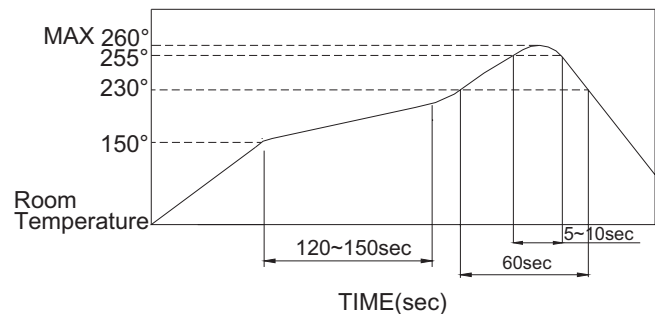
### SOLDERING PROCESS

#### CLEANING:

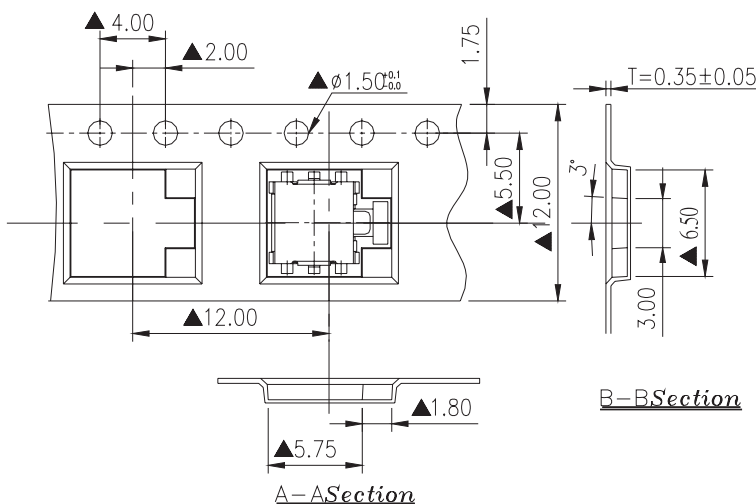
1. Only Tape sealed types apply to wash process.
2. Do not remove the tape before wash process.
3. After soldering process, do not continue the wash process immediately. Please wait for at least 3 minutes.
4. Apply alcoholic solvents as cleaning agent do not use other solvents of water.
5. Ultrasonic cleaning is not recommended.
6. The cleaning process per stage is max. 1 minute and the whole cleaning time are not to exceed 3 minutes.
7. Do not impose any external force on switch while washing.

Any flux enters the switch may fail the conductivity.

Reflow Temperature Profile: (reference)



### PACKING



Part Number	Number Per Tube	Number Per Reel
MP9	-	4000pcs./Reel

GENERAL TOLERANCES MAX:  $\pm 0.1$ mm.