

PLEASE CHECK WWW.MOLEX.COM FOR LATEST PART INFORMATION

Part Number: [0050579023](#)
Status: **Active**
Overview: [cgrid_sl_products](#)
Description: 2.54mm (.100") Pitch SL™ Crimp Housing, Single Row, Version A, Nonpolarized, 23 Circuits

Documents:

| | |
|-----------------------------------------------|------------------------------------------------------|
| 3D Model | Product Specification PS-70058 (PDF) |
| Drawing (PDF) | Product Specification PS-70400 (PDF) |
| Packaging Specification (PDF) | RoHS Certificate of Compliance (PDF) |

Agency Certification

| | |
|-----|-----------|
| CSA | LR19980 |
| TUV | R72081037 |
| UL | E29179 |

General

| | |
|----------------|-----------------------------------|
| Product Family | Crimp Housings |
| Series | 70066 |
| Comments | Version A |
| Overview | cgrid_sl_products |
| Product Name | SL™ |

Physical

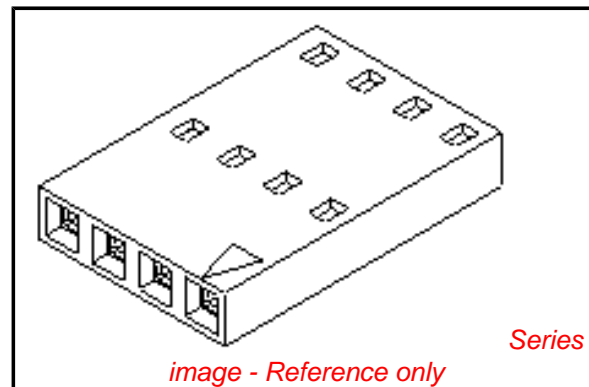
| | |
|-------------------------------|-----------------|
| Circuits (maximum) | 23 |
| Color - Resin | Black |
| Flammability | 94V-0 |
| Gender | Female |
| Glow-Wire Compliant | No |
| Material - Resin | Polyester Alloy |
| Number of Rows | 1 |
| Packaging Type | Bag |
| Panel Mount | No |
| Pitch - Mating Interface (in) | 0.100 In |
| Pitch - Mating Interface (mm) | 2.54 mm |
| Stackable | Yes |
| Temperature Range - Operating | -40°C to +105°C |

Material Info

| | |
|-----------------|------------|
| Old Part Number | 70066-0022 |
|-----------------|------------|

Reference - Drawing Numbers

| | |
|-------------------------|--------------------|
| Packaging Specification | PK-70066-100 |
| Product Specification | PS-70058, PS-70400 |
| Sales Drawing | SD-70066-0001-0024 |
| Test Summary | TS-70058-001 |



EU RoHS

ELV and RoHS Compliant
REACH SVHC Contains SVHC: No
Halogen-Free Status
Not Reviewed

China RoHS



Need more information on product environmental compliance?

Email productcompliance@molex.com
 For a multiple part number RoHS Certificate of Compliance, [click here](#)

Please visit the [Contact Us](#) section for any non-product compliance questions.

Search Parts in this Series

[70066Series](#)

Mates With

[8624](#) , [70203](#) , [70206](#) , [42375](#) , [42377](#)

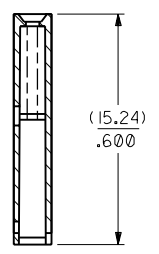
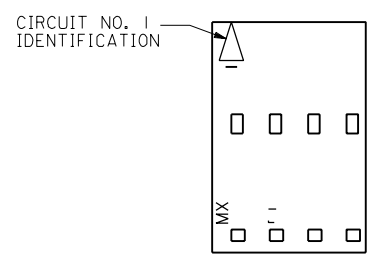
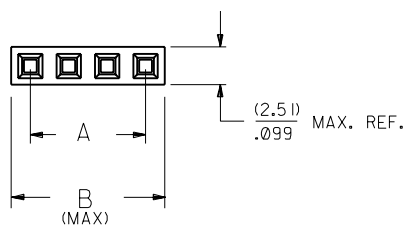
Use With

[70058](#) , [71851](#)

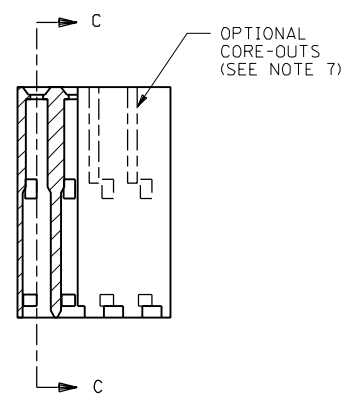
NOTES:

- 1) MATERIAL: G.F. POLYESTER
- 2) HOUSING TO BE USE WITH TERMINAL PT. NO. 70058-****
- 3) SEE CHART FOR CIRCUIT SIZES.
- 4) TO BE USED WITH (0.64)/.025 SQ. OR RD. PINS.
- 5) PARTS STACKABLE END TO END AND SIDE BY SIDE ON (2.54)/.100 CENTERS.
- 6) REFER TO PRODUCT SPECIFICATION NO. : P.S.-70058
- 7) PARTS MAY OR MAY NOT BE SUPPLIED WITH EXTERIOR CORE-OUT CONFIGURATION. SEE DWG. SD-70066-**** FOR OPTIONAL HOUSING DETAILS.
- 8) PACKAGE PER PK-70066-100.

OPTION "A"



SECTION C-C



| CKT. SIZE | EDP. NO. | ENG. NO. | A | B |
|-----------|------------|------------|-----------------|-----------------|
| 2 | 50-57-9002 | 70066-0001 | (2.54) / .100 | (5.05) / .199 |
| 3 | 50-57-9003 | 70066-0002 | (5.08) / .200 | (7.59) / .299 |
| 4 | 50-57-9004 | 70066-0003 | (7.62) / .300 | (10.13) / .399 |
| 5 | 50-57-9005 | 70066-0004 | (10.16) / .400 | (12.67) / .499 |
| 6 | 50-57-9006 | 70066-0005 | (12.70) / .500 | (15.21) / .599 |
| 7 | 50-57-9007 | 70066-0006 | (15.24) / .600 | (17.75) / .699 |
| 8 | 50-57-9008 | 70066-0007 | (17.78) / .700 | (20.29) / .799 |
| 9 | 50-57-9009 | 70066-0008 | (20.32) / .800 | (22.83) / .899 |
| 10 | 50-57-9010 | 70066-0009 | (22.86) / .900 | (25.37) / .999 |
| 11 | 50-57-9011 | 70066-0010 | (25.40) / 1.000 | (27.91) / 1.099 |
| 12 | 50-57-9012 | 70066-0011 | (27.94) / 1.100 | (30.45) / 1.199 |
| 13 | 50-57-9013 | 70066-0012 | (30.48) / 1.200 | (32.99) / 1.299 |
| 14 | 50-57-9014 | 70066-0013 | (33.02) / 1.300 | (35.53) / 1.399 |
| 15 | 50-57-9015 | 70066-0014 | (35.56) / 1.400 | (38.07) / 1.499 |
| 16 | 50-57-9016 | 70066-0015 | (38.10) / 1.500 | (40.61) / 1.599 |
| 17 | 50-57-9017 | 70066-0016 | (40.64) / 1.600 | (43.15) / 1.699 |
| 18 | 50-57-9018 | 70066-0017 | (43.18) / 1.700 | (45.69) / 1.799 |
| 19 | 50-57-9019 | 70066-0018 | (45.72) / 1.800 | (48.23) / 1.899 |
| 20 | 50-57-9020 | 70066-0019 | (48.26) / 1.900 | (50.77) / 1.999 |
| 21 | 50-57-9021 | 70066-0020 | (50.80) / 2.000 | (53.31) / 2.099 |
| 22 | 50-57-9022 | 70066-0021 | (53.34) / 2.100 | (55.85) / 2.199 |
| 23 | 50-57-9023 | 70066-0022 | (55.88) / 2.200 | (58.39) / 2.299 |
| 24 | 50-57-9024 | 70066-0023 | (58.42) / 2.300 | (60.93) / 2.399 |
| 25 | 50-57-9025 | 70066-0024 | (60.96) / 2.400 | (63.47) / 2.499 |

| | | | | | |
|--------------------------------------------------------------------------------------------|---------------|------------------------------------------------------------------------------------------------------------------------------------------------|--|------------------------------------------------------------------------------------------------------------------|--|
| DIMENSIONS SHOWN (METRIC) INCH UNLESS OTHERWISE SPECIFIED TOLERANCES: ANGULAR ± 1/2° | | 3 PLACE ± .010 --- 2 PLACE ± .014 ± 0.25 1 PLACE --- ± 0.35 | | DRAFT WHERE APPLICABLE MUST REMAIN WITHIN DIMENSIONS | |
| DRWL. BY: RS | CHK'D. BY: WZ | FILE NAME: 700660001 THIS DRAWING CONTAINS INFORMATION THAT IS PROPRIETARY TO MOLEX INC. AND SHOULD NOT BE USED WITHOUT WRITTEN PERMISSION. | | TITLE: HOUSING CONNECTOR (2.54)/.100 GRID STACKABLE SINGLE ROW SHEET NO. 1 DATE: 03/27/86 MFG. SH. REV. | |
| APP'D. BY: RL | SCALE: 4:1 | MOLEX INCORPORATED L1SLE,ILL. 60532 U.S.A. | | PART NO. SD-70066-0001-0024 DRWG. NO. | |
| ADD PKG NOTE ECN UDT2000-0468 SCHAFFER 99/12/1 | | REDRAWN ON CAD ECR * 9120 5/5/86 WZ | | REVISIONS: LTR. REVISIONS | |