

PLEASE CHECK WWW.MOLEX.COM FOR LATEST PART INFORMATION

Part Number: [0026033091](#)
Status: **Active**
Overview: [kk](#)
Description: 3.96mm (.156") Pitch KK® Crimp Terminal Housing - Use With Trifurcon® Terminals, 9 Circuits

Documents:

[3D Model](#) [Product Specification PS-40-02 \(PDF\)](#)
[Drawing \(PDF\)](#) [RoHS Certificate of Compliance \(PDF\)](#)

Agency Certification

CSA LR19980

General

Product Family Crimp Housings
 Series [6442](#)
 Overview [kk](#)
 Product Name KK®

Physical

Circuits (maximum) 9
 Color - Resin Natural
 Flammability 94V-2
 Gender Female
 Glow-Wire Compliant No
 Material - Resin Nylon
 Number of Rows 1
 Packaging Type Bag
 Panel Mount No
 Pitch - Mating Interface (in) 0.156 In
 Pitch - Mating Interface (mm) 3.96 mm
 Stackable No
 Temperature Range - Operating 0°C to +75°C

Material Info

Old Part Number 6442-09-Z

Reference - Drawing Numbers

Product Specification PS-40-02
 Sales Drawing SD-6442

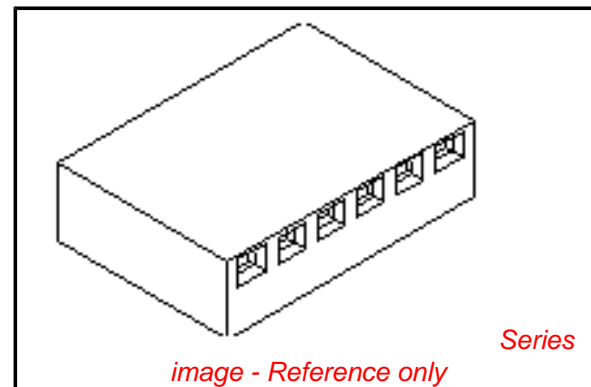


image - Reference only

EU RoHS

**ELV and RoHS
 Compliant**
**REACH SVHC
 Contains SVHC: No**
**Halogen-Free
 Status**

China RoHS



Not Reviewed

**Need more information on product
 environmental compliance?**

Email productcompliance@molex.com
 For a multiple part number RoHS Certificate of
 Compliance, [click here](#)

Please visit the [Contact Us](#) section for any
 non-product compliance questions.

Search Parts in this Series

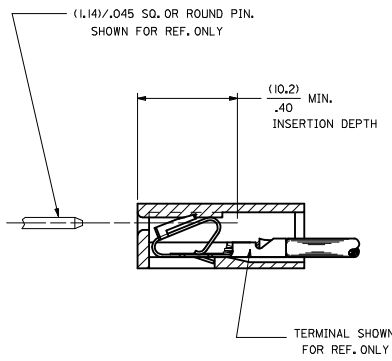
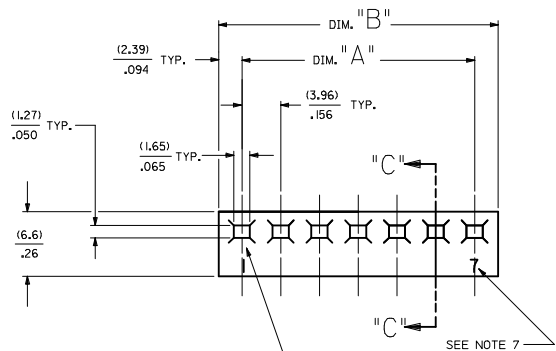
[6442Series](#)

Mates With

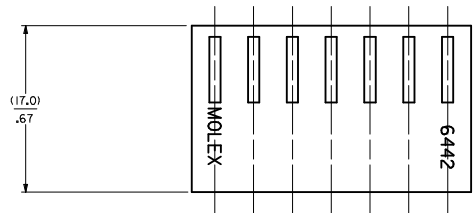
Molex 3.96mm (.156") pitch KK® headers

Use With

[6838](#) and [7258](#) KK® Trifurcon crimp
 terminals



SECTION "C-C"



| NO. OF CKT'S. | DIM. A | DIM. B |
|---------------|-------------|-------------|
| 1 | ----- | (4.78+.18) |
| 2 | (3.96+.13) | (8.74+.18) |
| 3 | .156+.005 | .344+.007 |
| 4 | (7.92+.13) | (12.70+.18) |
| 5 | .312+.005 | .500+.007 |
| 6 | (11.89+.13) | (16.66+.18) |
| 7 | .468+.005 | .656+.007 |
| 8 | (15.85+.13) | (20.62+.18) |
| 9 | .624+.005 | .812+.007 |
| 10 | (19.81+.13) | (24.59+.18) |
| 11 | .780+.005 | .968+.007 |
| 12 | (23.77+.13) | (28.55+.18) |
| 13 | .936+.005 | 1.124+.007 |
| 14 | (27.74+.25) | (32.51+.30) |
| 15 | 1.092+.010 | 1.280+.012 |
| 16 | (31.70+.25) | (36.47+.30) |
| 17 | 1.248+.010 | 1.436+.012 |
| 18 | (35.66+.25) | (40.44+.30) |
| 19 | 1.404+.010 | 1.592+.012 |
| 20 | (39.62+.25) | (44.40+.30) |
| 21 | 1.560+.010 | 1.748+.012 |
| 22 | (43.59+.25) | (48.36+.30) |
| 23 | 1.716+.010 | 1.904+.012 |
| 24 | (47.55+.30) | (52.32+.36) |
| | 1.872+.012 | 2.060+.014 |
| | (51.51+.36) | (56.29+.41) |
| | 2.028+.014 | 2.216+.016 |
| | (55.47+.36) | (60.25+.41) |
| | 2.184+.014 | 2.372+.016 |
| | (59.44+.36) | (64.21+.41) |
| | 2.340+.014 | 2.528+.016 |
| | (63.40+.36) | (68.17+.41) |
| | 2.496+.014 | 2.684+.016 |
| | (67.36+.36) | (72.14+.41) |
| | 2.652+.014 | 2.840+.016 |
| | (71.32+.36) | (76.10+.41) |
| | 2.808+.014 | 2.996+.016 |
| | (75.29+.46) | (80.06+.51) |
| | 2.964+.018 | 3.152+.020 |
| | (79.25+.46) | (84.02+.51) |
| | 3.120+.018 | 3.308+.020 |
| | (83.21+.46) | (87.99+.51) |
| | 3.276+.018 | 3.464+.020 |
| | (87.17+.46) | (91.95+.51) |
| | 3.432+.018 | 3.620+.020 |
| | (91.14+.46) | (95.91+.51) |
| | 3.588+.018 | 3.776+.020 |

- NOTES:
1. MATERIAL A: NYLON 6/6 UL94V-2. COLOR: NATURAL
 2. FINISH: N/A
 3. THIS PART COMPLIES WITH PRODUCT SPECIFICATION PS-40-02.
 4. SEE SHEET 2 FOR OPTIONS.
 5. HOUSING SHOWN ABOVE IS STANDARD HOUSING WITH NO OPTIONS.
 6. THIS HOUSING FOR USE WITH TERMINAL NO.,
6438-N, (18-22 GA) WITH (2.79)/.110 MAX. INSULATION DIA.
6838-N, (18-24 GA) WITH (2.79)/.110 MAX. INSULATION DIA.
7258-N, (22-26 GA) WITH (1.65)/.065 MAX. INSULATION DIA.
 7. CIRCUIT SIZE MOLDED ON 4 THRU 24 CIRCUIT HOUSINGS ONLY.
 8. THIS PART CONFORMS TO CLASS B REQUIREMENTS OF COSMETIC SPECIFICATION PS-45499-002.

HOUSING OPTIONS

| CODE | HOOKS | SIDE HOOKS | RAMP |
|-------|-------|------------|-----------|
| BLANK | NONE | NONE | NONE |
| A | NONE | YES | NONE |
| R | NONE | NONE | FRICITION |
| B | NONE | NONE | TYPE B |
| C | NONE | NONE | TYPE C |

6442- * N - * - * - *

VOLTAGE RATING OPTION
BLANK=NONE
V= '250 VAC' ON HOUSING

MAT'L OPTION
BLANK= MATERIAL A (SEE NOTE 1)

MOLDED VOID CODE
Z=NO VOIDS
A=CKT. 1 VOID,
B=CKT. 2 VOID, ETC.
5I=1ST MULTIPLE VOID,
52=2ND MULTIPLE VOID, ETC.

NO. OF CKT'S.

| | | | | | | | |
|---|-------------------------------|---------------------------------------|--------|--|---|--------------|------------------------|
| REMOVE D OPTION EC NO: UCP2009-3148 DRAWNKK/PPER 2009/07/13 CHKD:SSOUSEK 2009/07/13 APPR:FSMTH 2009/08/05 | QUALITY SYMBOLS ▽=0 ▽=0 | GENERAL TOLERANCES (UNLESS SPECIFIED) | | DIMENSION STYLE | SCALE | DESIGN UNITS | THIRD ANGLE PROJECTION |
| | | mm | INCH | MM/IN | --- | INCH | |
| | | 4 PLACES | ± --- | ± --- | DRAWN BY POLGAR DATE 1986/12/03 | | |
| | | 3 PLACES | ± --- | ± .010 | CHECKED BY DATE 1986/12/03 | | |
| | | 2 PLACES | ± 0.25 | ± .014 | APPROVED BY ENZ DATE 1986/12/03 | | |
| | | 1 PLACE | ± 0.36 | ± --- | MATERIAL NO. SEE CHART DOCUMENT NO. SD-6442 | | |
| | | ANGULAR ±1/2° | | DRAFT WHERE APPLICABLE MUST REMAIN WITHIN DIMENSIONS | | | |

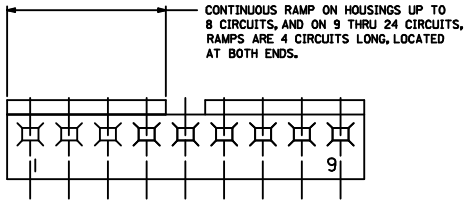
SHJ.REV.

| | |
|---|---|
| 4 | J |
| 3 | J |
| 2 | J |
| 1 | J |

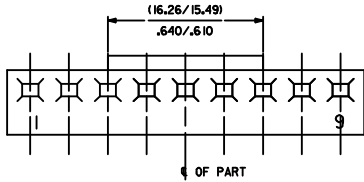
KK (3.96)/.156 TRIFURCON CRIMP TERMINAL HOUSING 6442 SERIES

MOLEX INCORPORATED

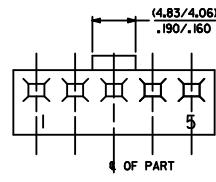
SHEET NO. 1 OF 4



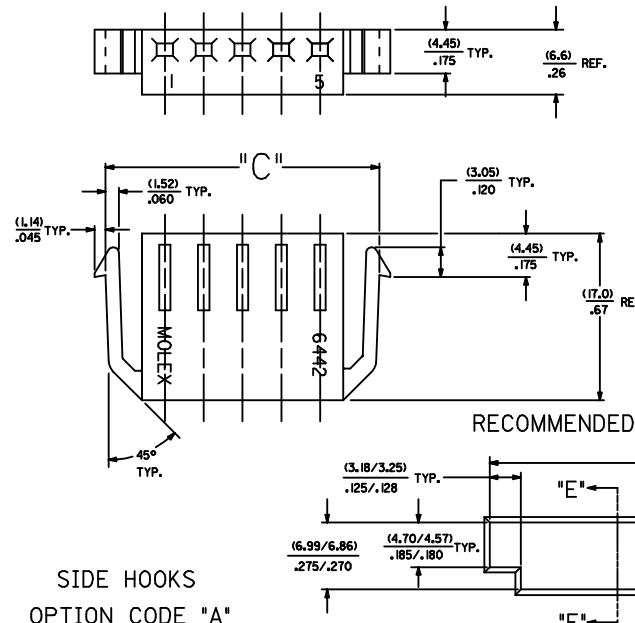
STD. RAMP OPTION CODE "R"



SELECTIVE RAMP
OPTION CODE "C"

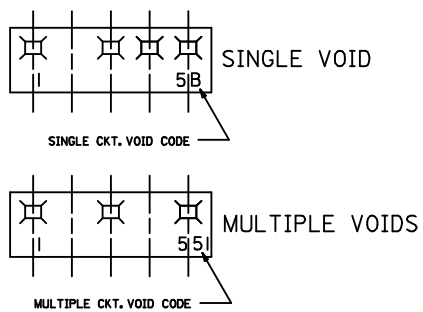


SELECTIVE RAMP
OPTION CODE "B"

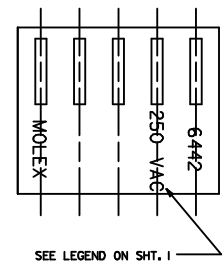


SIDE HOOKS
OPTION CODE "A"

| NO. OF CKT'S. | DIM. "C" | DIM. "D" |
|---------------|------------------------------|-----------------------------|
| 2 | (16.48/15.60) .647/.614 | (15.47/15.34) .609/.604 |
| 3 | (20.45/19.56) .805/.770 | (19.43/18.30) .765/.760 |
| 5 | (28.37/27.48) 1.117/1.082 | (27.36/27.23) L077/1.072 |



MOLDED VOIDS
SEE LEGEND ON SHT. 1
SEE CHART FOR VOID CKT. LOCATIONS



OPT. VOLTAGE RATING

| REV | DESCRIPTION | QUALITY SYMBOLS | GENERAL TOLERANCES (UNLESS SPECIFIED) | | DIMENSION STYLE MM/IN | SCALE --- | DESIGN UNITS INCH | THIRD ANGLE PROJECTION |
|-----|---------------------|-----------------|---------------------------------------|--------|--|--------------------|---|------------------------|
| | | | mm | INCH | | | | |
| 1 | SEE SHEET 1 | ▽=0 ▽=0 | 4 PLACES ± .010 | ± .010 | DRAWN BY POLGAR | DATE 1986/12/05 | TITLE KK (3.96)/156 TRIFURCON CRIMP TERMINAL HOUSING 6442 SERIES | |
| 2 | EC NO: UCP2009-3148 | | 3 PLACES ± .025 | ± .014 | CHECKED BY PATEL | DATE 1986/12/05 | MATERIAL NO. MOLEX INCORPORATED | |
| 3 | DRWNK/PPER | | 2 PLACES ± 0.36 | ± .010 | APPROVED BY LENZ | DATE 1986/12/05 | DOCUMENT NO. SD-6442 | |
| 4 | CHKD:SSOUSEK | | 1 PLACE ± 0.36 | ± .010 | SEE CHART | | SHEET NO. 2 OF 4 | |
| 5 | APPR:FSM/TH | | ANGULAR ± 1/2° | | THIS DRAWING CONTAINS INFORMATION THAT IS PROPRIETARY TO MOLEX INCORPORATED AND SHOULD NOT BE USED WITHOUT WRITTEN PERMISSION | | | |

