

PLEASE CHECK WWW.MOLEX.COM FOR LATEST PART INFORMATION

Part Number: [0873690200](#)
Status: **Active**
Description: 2.00mm (.079") Pitch Crimp Housing, Single Row, 2 Circuits

Documents:

[3D Model](#) [RoHS Certificate of Compliance \(PDF\)](#)
[Drawing \(PDF\)](#)

Agency Certification

CSA LR19980
 UL E29179

General

Product Family Crimp Housings
 Series [87369](#)
 Product Name N/A

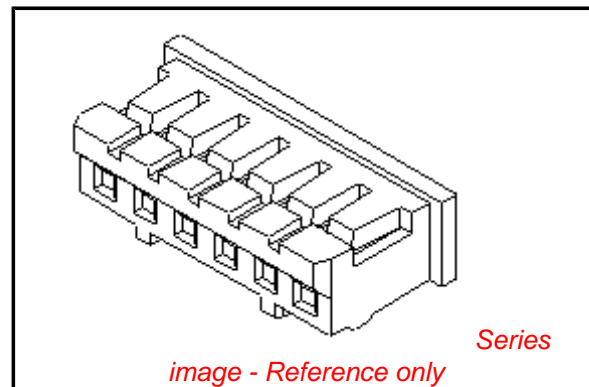
Physical

Circuits (maximum) 2
 Color - Resin Natural
 Flammability 94V-0
 Gender Female
 Glow-Wire Compliant No
 Lock to Mating Part Yes
 Material - Resin Nylon
 Number of Rows 1
 Packaging Type Bag
 Panel Mount No
 Pitch - Mating Interface (in) 0.079 In
 Pitch - Mating Interface (mm) 2.00 mm
 Stackable No
 Temperature Range - Operating -25°C to +85°C

Material Info

Reference - Drawing Numbers

Product Specification RPS-87369-001
 Sales Drawing SD-87369-**0*



EU RoHS

**ELV and RoHS
 Compliant**
**REACH SVHC
 Contains SVHC: No**
**Halogen-Free
 Status**

China RoHS



**Need more information on product
 environmental compliance?**

Email productcompliance@molex.com
 For a multiple part number RoHS Certificate of
 Compliance, [click here](#)

Please visit the [Contact Us](#) section for any
 non-product compliance questions.

Search Parts in this Series

[87369Series](#)

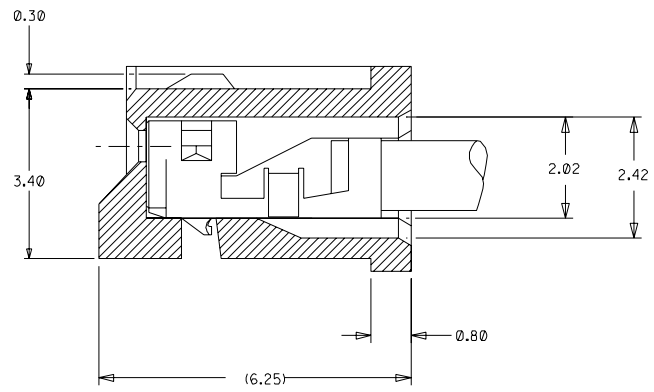
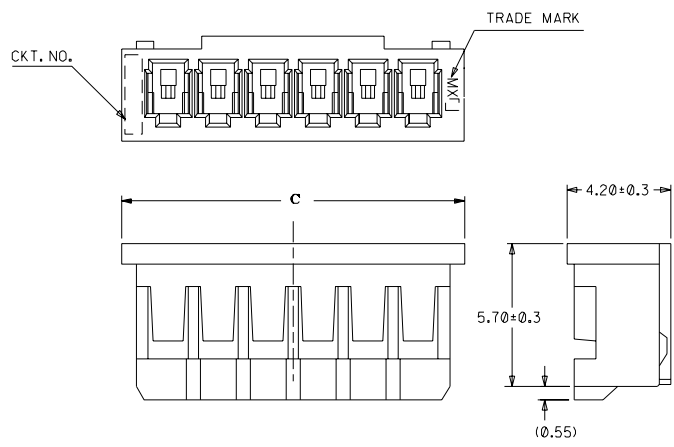
Mates With

[89400](#) Vertical Header, [89401](#) Right Angle
 Header

Use With

[50212](#) Crimp Terminals. [104440](#) 2.00mm
 (.079") Pitch Crimp Terminals

CAD FILE S87369.DGN
 DWG. NO. SD 87369-**-00



TERMINAL ASSEMBLY DRAWING
 (10:1)

PART NO.LEGEND

87369 - ** 0 *

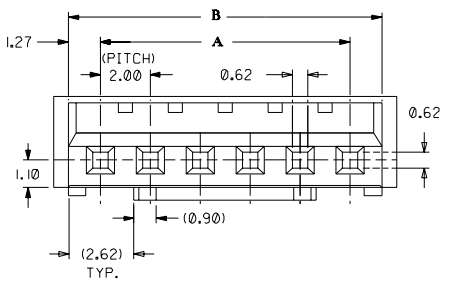
CKT SIZE ———— COLOR OPTION

0 - NATURAL
 1 - BLACK
 2 - RED
 3 - YELLOW
 4 - BLUE
 5 - GREEN

NOTES

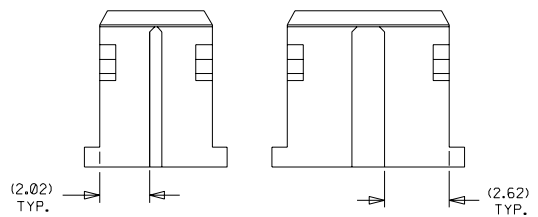
1. APPLICABLE TERMINAL : 50212-8*00
2. MATERIAL : NYLON 66, UL94V-0 NATURAL
3. MATES WITH 89400-**-10/**20 & 89401-**-10

C	B	A	ENG NO.	CKT
33.74	32.54	30	87369-160*	16
31.74	30.54	28	87369-150*	15
29.74	28.54	26	87369-140*	14
27.74	26.54	24	87369-130*	13
25.74	24.54	22	87369-120*	12
23.74	22.54	20	87369-110*	11
21.74	20.54	18	87369-100*	10
19.74	18.54	16	87369-090*	9
17.74	16.54	14	87369-080*	8
15.74	14.54	12	87369-070*	7
13.74	12.54	10	87369-060*	6
11.74	10.54	8	87369-050*	5
9.74	8.54	6	87369-040*	4
7.74	6.54	4	87369-030*	3
5.74	4.54	2	87369-020*	2



**IN CASE OF
 2 CIRCUIT HSG.**

**IN CASE OF
 3 CIRCUIT HSG.**



UNITS : MM

				MATERIAL : SEE NOTES		MOLEX SINGAPORE PTE LTD SHEET 1 OF 1	
B5	REVISE PART NO. LEGEND & NOTE 3 PER ECN 1999-0061	-	SAK	980814	GENERAL TOLERANCES ± 0.20/0.008		REV B5
B4	REL 87369-**-05 (GREEN) AS PER PDR* 98-06-0330 (AS PER ECN* S1998-0617)	-	SEE TOH	980623	DWG. NO.: SD 87369-**-0*		
B3	ADD COLOR OPTION REPLACE SD-87369-**-0*	S60565	SAK	GMS	960618	TITLE : 2.0 MM PITCH WIRE TO BOARD CONN. RECEPTACLE	
LTR	REVISION RECORD	ECN	DR	CHK	DATE	DRAWN BY CLEE 920305	CHK'D BY JOEY 920326
REVISE ONLY ON CAD SYSTEM						APPR'D BY ROY 920326	SCALE 5:1

DO NOT SCALE DRAWING