

PLEASE CHECK WWW.MOLEX.COM FOR LATEST PART INFORMATION

Part Number: [0472450001](#)
Status: **Active**
Overview: [pogo_pins](#)
Description: 2.54mm (.100") Pitch Pogo Pin Connector, SMT, Vertical, with Pick-and- Place Cap, 3 Circuits, Lead-free

Documents:

[3D Model](#) [Product Specification PS-47245-001 \(PDF\)](#)
[Drawing \(PDF\)](#) [RoHS Certificate of Compliance \(PDF\)](#)

General

Product Family	PCB Headers
Series	47245
Application	Board-to-Board
Comments	Action Height: 3.15mm (.124")
Overview	pogo_pins
Product Name	PoGo Pin

Physical

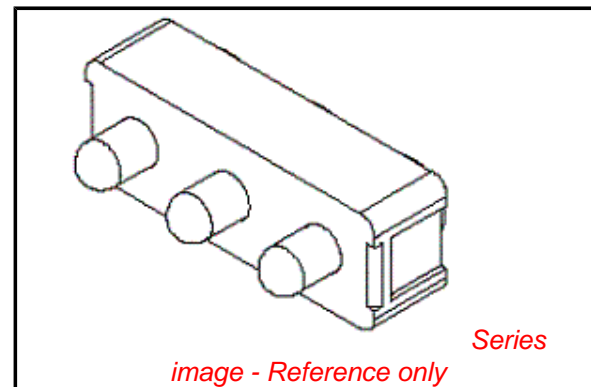
Breakaway	No
Circuits (Loaded)	3
Circuits (maximum)	3
Durability (mating cycles max)	20,000
First Mate / Last Break	No
Glow-Wire Compliant	No
Guide to Mating Part	No
Keying to Mating Part	None
Lock to Mating Part	None
Mated Height (in)	0.124 In
Mated Height (mm)	3.15 mm
Material - Plating Mating	Gold
Material - Plating Termination	Gold
Number of Rows	1
Orientation	Vertical
PCB Locator	No
PCB Retention	Yes
Packaging Type	Embossed Tape on Reel
Pitch - Mating Interface (in)	0.100 In
Pitch - Mating Interface (mm)	2.54 mm
Plating min: Mating (µin)	4
Plating min: Mating (µm)	0.10
Polarized to Mating Part	No
Polarized to PCB	No
Robotic Placement	Pick and Place Cap
Shrouded	No
Stackable	No
Temperature Range - Operating	-40°C to +85°C
Termination Interface: Style	Surface Mount

Electrical

Current - Maximum per Contact	2A
Voltage - Maximum	60V DC

Solder Process Data

Lead-free Process Capability	Reflow Capable (SMT only)
Process Temperature max. C	250



EU RoHS

RoHS Compliant by Exemption

REACH SVHC

Not Reviewed

Halogen-Free

Status

Not Halogen-Free

China RoHS



Pb

Need more information on product environmental compliance?

Email productcompliance@molex.com
 For a multiple part number RoHS Certificate of Compliance, [click here](#)

Please visit the [Contact Us](#) section for any non-product compliance questions.

Search Parts in this Series

[47245Series](#)

Material Info

Reference - Drawing Numbers

Packaging Specification	PK-47245-001
Product Specification	PS-47245-001
Sales Drawing	SD-47245-001

This document was generated on 05/26/2010

PLEASE CHECK WWW.MOLEX.COM FOR LATEST PART INFORMATION

10 9 8 7 6 5 4 3 2 1

F

E

D

C

B

A

F

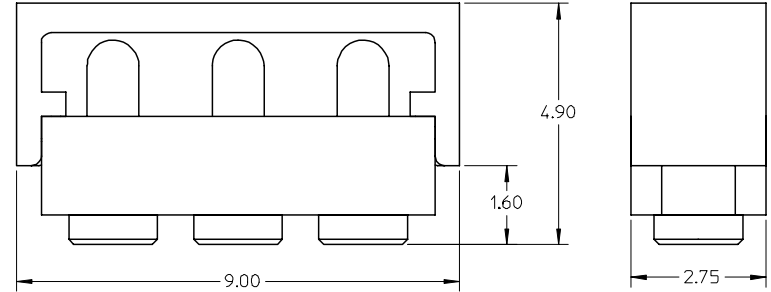
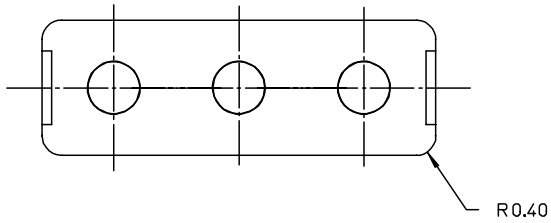
E

D

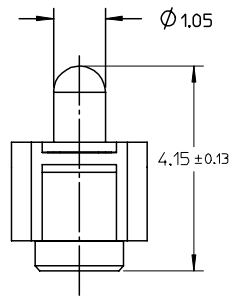
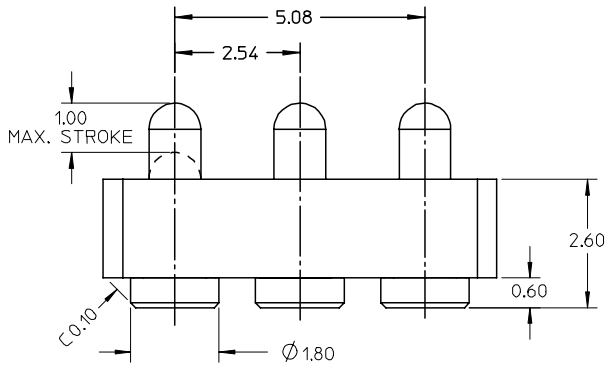
C

B

A

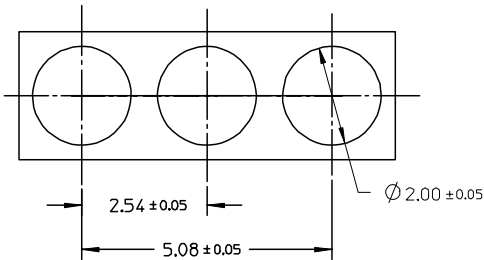


VIEW WITH PICK AND PLACE CAP

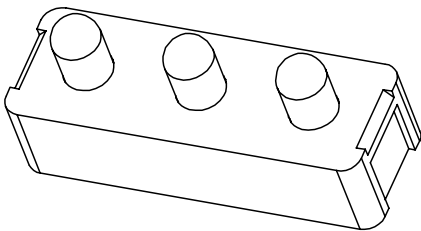


NOTES:

- 1 MATERIAL:
 - 1-1 PIN : COPPER ALLOY
 - 1-2 SOLDER PAD : COPPER ALLOY
 - 1-4 SPRING : SWP-B, PIANO WIRE OR EQUIVALENT
 - 1-5 HOUSING : NYLON 46 UL 94-V0, BLACK
- 2 FINISH:
 - PIN SOLDER PAD & SPRING : OVERALL 4µ MIN. GOLD OVER 50µ MIN. NICKEL
- 3 MECHANICAL SPECIFICATION:
 - 3-1 SPRING FORCE: 90g MIN AT NOMINAL WORKING HEIGHT 3.35mm
 - 3-2 MAX. STROKE IS 1.0mm
 - 3-3 DURABILITY : 20,000 cycles
- 4 ELECTRICAL SPECIFICATION :
 - 4-1 RATING VOLTAGE : 60VDC
 - 4-2 RATING CURRENT : 2A MAX.
 - 4-3 CONTACT RESISTANCE : 30 mOhms MAX AT NOMINAL WORKING HEIGHT
- 5 PRODUCT SPECIFICATION : PS-47245-001



RECOMMENDED PCB LAYOUT



NEW RELEASE EC NO: DRWN: CHKD:YJW APPR:	DESCRIPTION REV	QUALITY SYMBOLS	GENERAL TOLERANCES (UNLESS SPECIFIED)	DIMENSION STYLE MM ONLY	SCALE 10:1	DESIGN UNITS METRIC	THIRD ANGLE PROJECTION	
		▽=0 ∇=0	mm INCH	DRAWN BY XU XIANG	DATE 2005-07-12	TITLE ASSEMBLY POGO PIN CONNECTOR		
			4 PLACES ± --- ± --- 3 PLACES ± --- ± --- 2 PLACES ± 0.15 ± --- 1 PLACE ± --- ± ---	APPROVED BY	DATE	MOLEX INCORPORATED		
			ANGULAR ±1/2°	MATERIAL NO. 472450001	DOCUMENT NO. SD-47245-001	SHEET NO. 1 OF 1		
			DRAFT WHERE APPLICABLE MUST REMAIN WITHIN DIMENSIONS	THIS DRAWING CONTAINS INFORMATION THAT IS PROPRIETARY TO MOLEX INCORPORATED AND SHOULD NOT BE USED WITHOUT WRITTEN PERMISSION				

9 8 7 6 5 4 3 2 1