

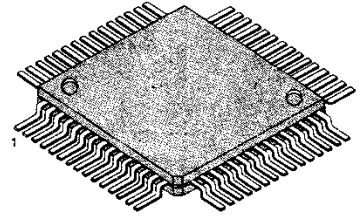
1 CHIP DIGITAL SERVO PROCESSOR FOR VCR

KA8320 is a VCR servo IC that includes analog amps.
And it can use for various head type VCR set.

FUNCTION

- 4 Head switching logic
- DAC output by switched capacitor
- C-Sync separator
- Digital noise rejection
- VISS function
- DFG, CFG frequency compensation amp
- Power On reset (Preventing Overflow)
- Frame servo
- VISS code write-in and detecting.

60 QFP



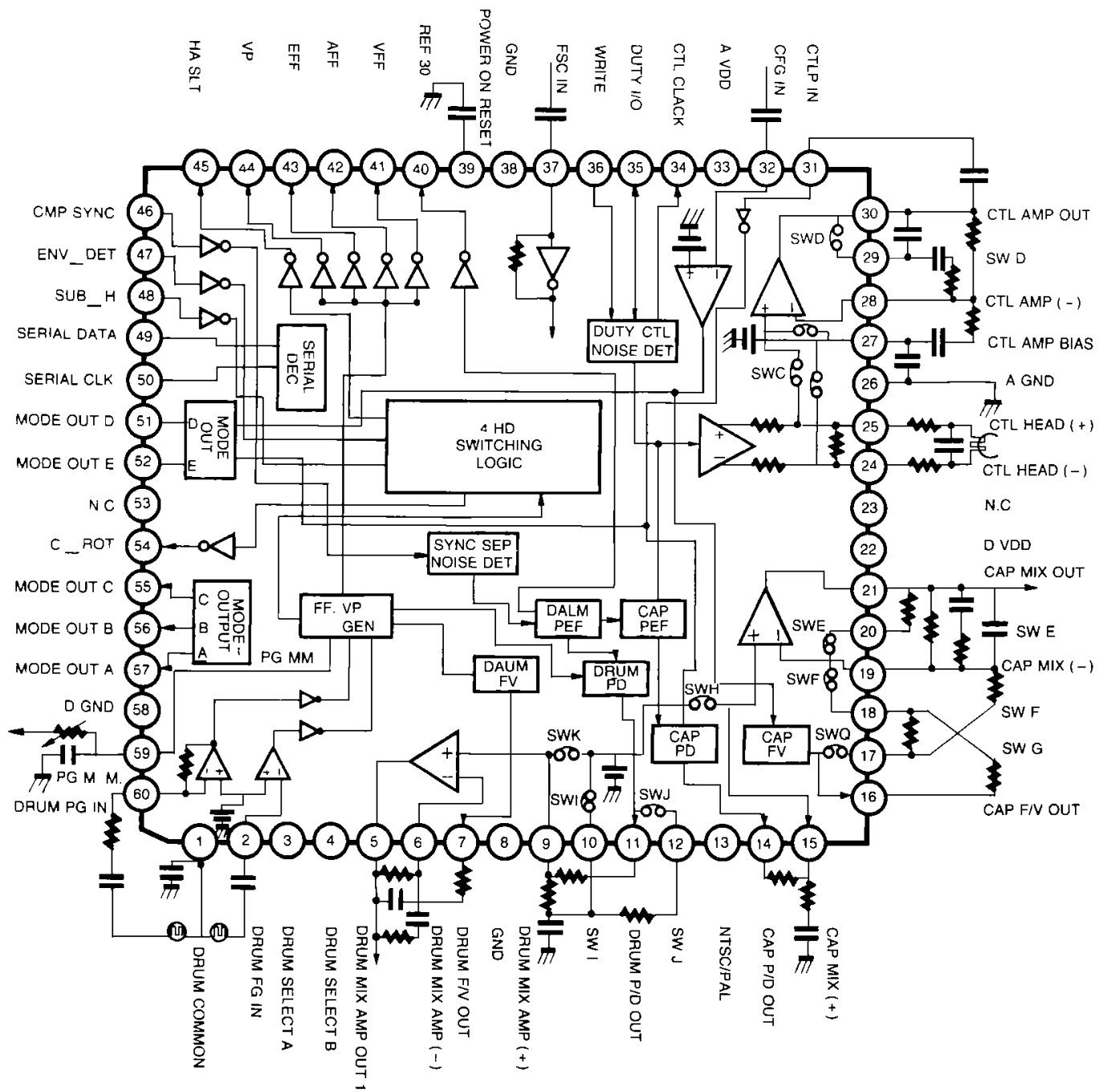
ORDERING INFORMATION

Device	Package	Operating Temperature
KA8320	60QFP	- 10 ~ 75°C

FEATURES

- Can be used for 6 kind of various head type.
- Stable DFG, CFG operation by internal limiter amp.
- 70 various search speed available.
- 10 various fine slow speed available
- X distance compensation by 7 bit serial data.
- Tracking control by 7 bit serial data.
- Quasi V-Sync position resetting by serial data.
- Minimizing color vibration and spreading by H-Sync discrete integrating f_H compensation.
- Noise and on H-Sync detecting for ble back screen.
- 3 kind of head switching output.
- Frame memory available.
- Digital noise rejection for analog input stage.
- CFG, CTL pulse count down for 2/4/6 detecting.
- High speed access by non-linear PD out.
- CTL pulse amp that has high frequency characteristics, high gain, high speed rising at power-on.

BLOCK DIAGRAM



PIN DESCRIPTION

PIN NO.	FUNCTION	DESCRIPTION																				
1	DROM COMMON	COMMON OF DFG/DPG. DC VIAS 2.5V																				
2	DRUM FG IN	DFG LIMMITER AMP IN																				
3	DRUM SELECT A	OPEN = "M" <table border="1" style="margin-left: auto; margin-right: auto;"> <thead> <tr> <th>B</th> <th>A</th> <th>H</th> <th>M</th> <th>L</th> </tr> </thead> <tbody> <tr> <td>H</td> <td></td> <td>2 HEAD</td> <td>2 HEAD</td> <td>2 HEAD</td> </tr> <tr> <td>M</td> <td></td> <td>DA4</td> <td>DA4</td> <td>DA4</td> </tr> <tr> <td>L</td> <td></td> <td>TEST</td> <td>TEST</td> <td>TEST</td> </tr> </tbody> </table>	B	A	H	M	L	H		2 HEAD	2 HEAD	2 HEAD	M		DA4	DA4	DA4	L		TEST	TEST	TEST
B			A	H	M	L																
H		2 HEAD	2 HEAD	2 HEAD																		
M		DA4	DA4	DA4																		
L		TEST	TEST	TEST																		
4																						
5	DRUM MIX AMP OUT	INPUT IMPEDANCE IS BELOW 2K Ω OUTPUT DYNAMIC RANGE 0~5V																				
6	DRUM MIXX AMP OUT																					
9	IN																					
15	CADSTAN MIX AMP																					
19	IN																					
21	CADSTAN MIX OUT																					
7	DRUM FV OUT	WITCHED CAPACIOR DA OUT																				
16	CAPSTAN FV OUT																					
11	DRUM PD OUT	SWITCHED CAPACITOR DA OUT																				
14	CADSTAN PD OUT																					
13	NTSC/PAL	H: NTSC L: PAL																				
24	CTL HEAD -	REC CTL OUT																				
25	CTL HEAD +																					
27	CTL AMP BIAS	OPEN LOOP GAIN NO OSCILLATION OUTPUT DYNAMIC RANGE 0~5V																				
28	CTL AMP (-)																					
30	CTL AMP OUT																					
31	CTL PUSE IN	2.5V INTERNAL VIAS																				
32	CFG IN																					
34	CTL CLOC																					

PIN DESCRIPTION (Continued)

PIN NO.	FUNCTION	DESCRIPTION									
35	DUTY I/O	<table border="1"> <thead> <tr> <th></th> <th>DUTY MODE</th> <th>VISS MODE</th> </tr> </thead> <tbody> <tr> <td>H</td> <td>DATA = "0" DUTY = 60%</td> <td>VISS NOT DETECTED</td> </tr> <tr> <td>L</td> <td>DATA = "1" DUTY = 27%</td> <td>VISS DETECTED</td> </tr> </tbody> </table>		DUTY MODE	VISS MODE	H	DATA = "0" DUTY = 60%	VISS NOT DETECTED	L	DATA = "1" DUTY = 27%	VISS DETECTED
	DUTY MODE	VISS MODE									
H	DATA = "0" DUTY = 60%	VISS NOT DETECTED									
L	DATA = "1" DUTY = 27%	VISS DETECTED									
36	WRITE	H: CTL OVERWRITE (PB) L: NORMAL									
37	f_{sc} IN (3 f_{sc})	INPUT SENSITIVITY ABOVE 150m V_{P-P} (f_{sc}) 350m V_{P-P} (3 f_{sc})									
39	POWER ON RESET	PREVENT COVERENT FLOW TO CTL HEAD FIN BY RESETTING AT POWER-ON. YOU MUST ATTACH A 0.01mf CAPACITOR TO GND									
40	REF 30	SERVO REFERENCE SIGNAL									
41	VFF	VIDEO HEAD SWITCHING PULSE									
42	AFF	AUDIO HEAD SWITCHING PULSE									
43	EFF	EXTRA HEAD SWITCHING PULSE									
44	VP	QUASI VERTICAL PULSE OUT									
45	HA-SLT	4 HEAD AMP SELECTING OUT									
46	CMP SYNC	<table border="1"> <thead> <tr> <th>BIT</th> <th>6 2 1 0</th> <th></th> </tr> </thead> <tbody> <tr> <td></td> <td>0 1 1 1</td> <td>C SYNC INPUT</td> </tr> <tr> <td></td> <td>1 1 1 1</td> <td>EX-RESET INPUT</td> </tr> </tbody> </table>	BIT	6 2 1 0			0 1 1 1	C SYNC INPUT		1 1 1 1	EX-RESET INPUT
BIT	6 2 1 0										
	0 1 1 1	C SYNC INPUT									
	1 1 1 1	EX-RESET INPUT									
47	ENV DETECT	ENVELOPE DETECT IN									
48	SUB-H	4 HEAD LOGIC SUB INPUT									
49	SERIAL DATA										
50	SERIAL CLOCK										
51	MODE D										
52	OUTPUT E	<table border="1"> <thead> <tr> <th>BIT 3 2 1 0</th> <th>D</th> <th>E</th> </tr> </thead> <tbody> <tr> <td>0 1 1 1</td> <td>CFG C/D</td> <td>CTL C/D</td> </tr> <tr> <td>BIT 1 1 1 1</td> <td>CFG</td> <td>CFG 30</td> </tr> </tbody> </table> <p>CFG C/D: CFG COONTED DOWN OUT CTL C/D: CTL COONTED DOWN OUT (COUNT DOWN RATIO IS DEPENDS ON SEARCU SPEED) CFG: 30 CAPSTAN PUASE REFERENCE 30Hz (CFG COUNTED DOWN OUT)</p>	BIT 3 2 1 0	D	E	0 1 1 1	CFG C/D	CTL C/D	BIT 1 1 1 1	CFG	CFG 30
BIT 3 2 1 0	D	E									
0 1 1 1	CFG C/D	CTL C/D									
BIT 1 1 1 1	CFG	CFG 30									

PIN DESCRIPTION (Continued)

PIN NO.	FUNCTION	DESCRIPTION																							
54	C-ROT	COLOR ROTATION OUT																							
55	MODE C OUT	<table border="1"> <thead> <tr> <th data-bbox="699 367 938 412">BIT 5 4 2 1 0</th> <th data-bbox="938 367 1110 412">A</th> <th data-bbox="1110 367 1283 412">B</th> <th data-bbox="1283 367 1455 412">C</th> </tr> </thead> <tbody> <tr> <td data-bbox="699 412 938 456">0 0 1 1 1</td> <td data-bbox="938 412 1110 456">SP</td> <td data-bbox="1110 412 1283 456">SP</td> <td data-bbox="1283 412 1455 456">LP</td> </tr> <tr> <td data-bbox="699 456 938 501">0 1 1 1 1</td> <td data-bbox="938 456 1110 501">SP</td> <td data-bbox="1110 456 1283 501">EP</td> <td data-bbox="1283 456 1455 501">LP</td> </tr> <tr> <td data-bbox="699 501 938 582">1 0 1 1 1</td> <td data-bbox="938 501 1110 582">CTL DELAY COUNTER</td> <td data-bbox="1110 501 1283 582">H-OSC</td> <td data-bbox="1283 501 1455 582">NOISE DET.</td> </tr> <tr> <td data-bbox="699 582 938 725">1 1 1 1 1</td> <td data-bbox="938 582 1110 725">CAPSTAN PHASE DETECT OUT</td> <td data-bbox="1110 582 1283 725">DRUM FG</td> <td data-bbox="1283 582 1455 725">DRUM PG</td> </tr> </tbody> </table>				BIT 5 4 2 1 0	A	B	C	0 0 1 1 1	SP	SP	LP	0 1 1 1 1	SP	EP	LP	1 0 1 1 1	CTL DELAY COUNTER	H-OSC	NOISE DET.	1 1 1 1 1	CAPSTAN PHASE DETECT OUT	DRUM FG	DRUM PG
BIT 5 4 2 1 0	A					B	C																		
0 0 1 1 1	SP					SP	LP																		
0 1 1 1 1	SP					EP	LP																		
1 0 1 1 1	CTL DELAY COUNTER	H-OSC	NOISE DET.																						
1 1 1 1 1	CAPSTAN PHASE DETECT OUT	DRUM FG	DRUM PG																						
56	MODE B OUT																								
57	MODE A OUT																								
59	PG M.M.																								
60	DRUM PG IN																								

ABSOLUTE MAXIMUM RATINGS ($T_a = 25^\circ\text{C}$)

Characteristics	Symbol	Value	Unit
Supply VTG	V_{CCMAX}	6.0	V
Power Dissipation	P_D	500	mW
Operating Temperature	T_{OPR}	- 10 ~ 70	$^\circ\text{C}$
Storage Temperature	T_{STG}	- 40 ~ 125	$^\circ\text{C}$

ELECTRICAL CHARACTERISTICS ($T_a = 25^\circ\text{C}$, $V_{CC} = 5\text{V}$)

Characteristic	Symbol	Test Condition	Min	Typ	Max	Unit
Supply Current	I_{CC}		8.0	30	42	mA
2 Value Output Voltage	V_{OL}	Unload	—	0.0	0.05	V
2 Value Output Voltage	V_{OH}	Unload	4.9	5.0	—	V
2 Value Output Voltage	V_{IL}	Load Current = 2mA	—	0.6	1.2	V
2 Value Output Voltage	V_{IH}	Load Current = 2mA	3.8	4.4	—	V
Pull pu Output Voltage	V_{OL}	Unload	0.0	0.1	0.3	V
Pull up Output Voltage	V_{OH}	Unload	4.9	5.0	—	V
Pull up Output voltage	V_{IL}	Load Current = 2mA	—	0.6	1.2	V
Pull up Resistance	R_H		6.0	9.0	13.0	K Ω
3 Value Output Voltage	V_{OL}	Unload	0.0	0.2	0.4	V
3 Value Output Voltage	V_{OM}	Unload	2.3	2.5	2.8	V
3 Value Output Voltage	V_{OL}	Unload	4.6	4.8	5.0	V
3 Value Output Voltage	V_{IL}	Load Current = 1mt	—	0.6	1.2	V
3 Value Output Voltage	V_{IH}	Load Current = 1mA	3.8	4.4	—	V
3 Value Input Resistance	R_M		6.0	9.0	13.0	K Ω
REC CTL Output Voltage	V_{CTL}	Unload, Potential Pin 29 and Pin 30	4.6	4.8	5.0	V
REC CTL Output Impedance	R_{CTL}	$I \leq 3\text{mA}$, Add Pin 29 and Pin 30	300	550	1000	Ω
2 Value Input V_{TH}	V_{TH}		1.5	2.5	3.5	V
2 Value Input Pull up R_1	R_{H1}		6.0	9.0	13.0	K Ω
2 Value Input Pull up R_2	R_{H2}		18.5	28.0	42.0	K Ω
3 Value Input V_{TH}	V_{TH1}	L/M V_{TH}	1.0	1.4	1.9	V
3 Value Input V_{TH}	V_{TH2}	M/H V_{TH}	3.1	3.5	4.0	V

ELECTRICAL CHARACTERISTICS (Continued)

Characteristic	Symbol	Test Condition	Min	Typ	Max	Unit
3 Value Input Voltage	V_M		2.0	2.5	2.9	V
3 Value Input Resistance	R_{M1}		18.5	28.0	42.0	K Ω
3 f_{SC} Input Sensitivity	$V_{3f_{SC}}$		—	—	350	mV _{P-P}
f_{SC} Input Sensitivity			—	—	150	mV _{P-P}
Schmitt Input Voltage 1	V_{IS1}		2.2	2.5	2.8	V
CTLTP Schmitt Input V_{TH}	V_{+TH1}	Normal Speed	120	150	180	mV _{OP}
CTLTP Schmitt Input V_{TH}	V_{-TH1}	Normal Speed	-180	-150	-120	mV _{OP}
CTLTP Schmitt Input V_{TH}	V_{+TH2}	Middle Search Speed	240	300	360	mV _{OP}
CTLTP Schmitt Input V_{TH}	V_{-TH2}	Middle Search Speed	-360	-300	-240	mV _{OP}
CTLTP Schmitt Input V_{TH}	V_{-TH3}	High Search Speed	-680	-600	-520	mV _{OP}
CTLTP Schmitt Input V_{TH}	V_{+TH4}	Viss Detect	850	1000	1150	mV _{OP}
CTLTP Schmitt Input V_{TH}	V_{-TH4}	Viss Detect	-1150	-1000	-850	mV _{OP}
Limit AMP Voltage	V_{IS2}		2.2	2.5	2.8	V
Limit AMP Input Sensitivity	V_{LMA}		—	—	10	mV _{P-P}
D.PG Input Voltage 2	V_{IS3}		2.2	2.5	2.8	V
PG Schmitt Input V_{TH}	V_{+TH}		380	480	580	mV _{OP}
PG Schmitt Input V_{TH}	V_{-TH}		140	190	240	mV _{OP}
DPG AMP Feedback R	R_{DP2}		80	100	120	K Ω
DPG AMP Input R	R_{DP1}		8	10	12	K Ω
Analog S/W ON R	R_{ASW}		150	300	500	Ω
Power on Reset Input V_{TH}	V_{43TH}		2.9	3.5	4.1	V
Power on Reset Pull up R	R_{43}		24.0	36.0	52.0	K Ω
Sync Input V_{TH}	V_{50TH}	DC Input	1.5	2.5	3.5	V
Sync Input Voltage	V_{50}		1.8	2.3	2.8	V
Sync Input Sensitivity	V_{SYC}	Duty 10%	150	230	310	mV _{P-P}
Sync Input Impedance	R_{50}		18.5	28.0	42.0	K Ω
M.M. V_{TH}	$V_{TH\ M.M}$		2.2	2.5	2.8	V
CTLTP AMP Gain	A_{CTL}	$f = 10\text{KHz}$	57	60	62	dB
CTLTP AMP Gain	A_{CTL0}	Open Loop Gain	—	85	—	dB
Drum Add AMP Gain	AD	$f = 1\text{KHz}$	57	60	62	dB
Drum Add AMP Gain	AD _O	Open Loop Gain	—	85	—	dB
CAP. Add AMP Gain	AC	$f = 1\text{KHz}$	57	60	62	dB
GAP. Add AMP Gain	ACO	Open Loop Gain	—	85	—	dB

FUNCTION SPEC**1. DFG**

	DFG	COUNTER CLOCK	COUNTER BIT	FV-GAIN	DRUM PD ADJ
NTSC	719.36 Hz	$f_{sc}/2$	11 BIT	60.75 mV/%	596Hz ~ 306Hz
PAL	600.00 Hz	$f_{sc}/3$	11 BIT	60.13 mV/%	496Hz ~ 758Hz

2. DPG

		S/H FREQ.	COUNTER CLOCK	COUNTER BIT	PD GAIN	
					KP 1	KP 2
NTSC	Phase Detect	29.97Hz	$f_{sc}/4$	11 BIT	1.092 V/ms	3.277 V/ms
	f_H Compensation	3.93KHz	$f_{sc}/4$	11 BIT	1.092 V/ms	3.277 V/ms
PAL	Phase Detect	25Hz	$f_{sc}/4$	11 BIT	1.353 V/ms	4.059 V/ms
	f_H Compensation	3.91Hz	$f_{sc}/4$	11 BIT	1.353 V/ms	4.059 V/ms

3. CPG

		S/H FREQ.	COUNTER CLOCK	COUNTER BIT		PD GAIN				
					KP 1		KP 2			
					NORMAL	+ 6 dB	NORMAL	+ 6 dB	NORMAL	+ 6 dB
NTSC		29.97 Hz	$f_{sc}/8$	11 BIT	10 BIT	0.546 V/ms	1.092 V/ms	1.639 V/ms	3.277 V/ms	
PAL	PB	25 Hz	$f_{sc}/8$	11 BIT	10 BIT	0.677 V/ms	1.353 V/ms	2.030 V/ms	4.059 V/ms	
	REC	25.22Hz								

4. CFG

				CFG FREQ.	S/H FREQ.	COUNTER CLOCK	COUNTER BIT	FV GAIN	
N T S C	N O R M A L & S E A R C H	N O R M A L	SP	S E E C A P S T A N F / V C E N T E R F R E Q.	1078.9 Hz	$f_{sc}/2$	11 BIT	40.50 mV/%	
			LP		539.6 Hz	$f_{sc}/4$			
			EP		359.6 Hz	$f_{sc}/6$			
		+ 6 dB	SP		1078.9 Hz	$f_{sc}/2$	10 BIT		81.00 mV/%
			LP		539.5 Hz	$f_{sc}/4$			
			EP		359.6 Hz	$f_{sc}/6$			
	S L O W	S L O W A	SP	809.1 Hz		$f_{sc}/2$	11 BIT	54.00 mV/%	
			LP	404.6 Hz		$f_{sc}/4$		54.00 mV/%	
			EP	269.7 Hz		$f_{sc}/6$		54.00 mV/%	
		S L O W B	SP	581.7 Hz		$f_{sc}/2$	11 BIT	75.12 mV/%	
			LP	404.6 Hz		$f_{sc}/4$		54.00 mV/%	
			EP	269.7 Hz		$f_{sc}/6$		54.00 mV/%	
P A L	N O R M A L & S E A R C H	N O R M A L	SP	S E E C A P S T A N F / V C E N T E R F R E Q.	756.7 Hz	$f_{sc}/4$	11 BIT	35.76 mV/%	
			LP		378.4 Hz	$f_{sc}/8$			
		+ 6 dB	SP		756.7 Hz	$f_{sc}/4$	10 BIT		71.52 mV/%
			LP		378.4 Hz	$f_{sc}/8$			
	S L O W	S L O W A	SP	567.5 Hz		$f_{sc}/4$	11 BIT	47.68 mV/%	
			LP	283.7 Hz		$f_{sc}/8$		47.68 mV/%	
		S L O W B	SP	378.4 Hz		$f_{sc}/4$	11 BIT	71.52 mV/%	
			LP	283.7 Hz		$f_{sc}/8$		47.68 mV/%	

5. CAPSTAN FV CENTER FREQUENCY (KHz)

SERIAL BIT	FORWARD					REVERSE				
	NTSC			PAL		NTSC			PAL	
11 10 9 8	SP	LP	EP	SP	LP	SP	LP	EP	SP	LP
0 0 0 0	1.079	0.539	0.360	0.757	0.378	1.079	0.539	0.360	0.757	0.378
0 0 0 1	2.158	1.079	0.719	1.513	0.757	2.158	1.079	0.719	1.513	0.757
0 0 1 0	3.236	1.618	1.079	2.270	1.135	3.236	1.618	1.079	2.270	1.135
0 0 1 1	4.455	2.158	1.438	3.109	1.513	4.138	2.158	1.438	2.921	1.513
0 1 0 0	5.569	2.697	2.517	3.886	1.891	5.174	2.697	2.517	3.651	1.891
0 1 0 1	7.796	3.898	3.236	5.441	2.720	7.242	3.621	3.236	5.111	2.556
0 1 1 0	10.024	5.012	7.796	6.996	3.498	9.312	4.655	7.242	6.572	3.286
0 1 1 1	11.584	5.569	3.712	8.049	3.886	9.988	5.173	3.449	7.092	3.651
1 0 0 0	12.743	12.743	12.743	8.854	8.854	10.986	10.986	10.986	7.801	7.801
1 0 0 1	13.901	13.901	13.515	9.659	9.659	11.985	11.985	11.652	8.510	8.510
1 0 1 0	15.060	15.060	15.060	10.464	10.464	12.984	12.984	12.984	9.219	9.219
1 0 1 1	16.218	7.239	4.826	11.269	5.052	13.983	6.725	4.483	9.928	4.762
1 1 0 0	17.376	8.353	5.569	12.074	5.830	14.981	7.759	5.173	10.637	5.494
1 1 0 1	18.535	9.467	6.311	12.879	6.607	15.980	8.794	5.864	11.346	6.227
1 1 1 0	SLOW									
1 1 1 1	SEE 4. CFG									
CAPSTAN PD ADJ	NTSC -7.2~8.4%					PAL -8.0~9.6%				

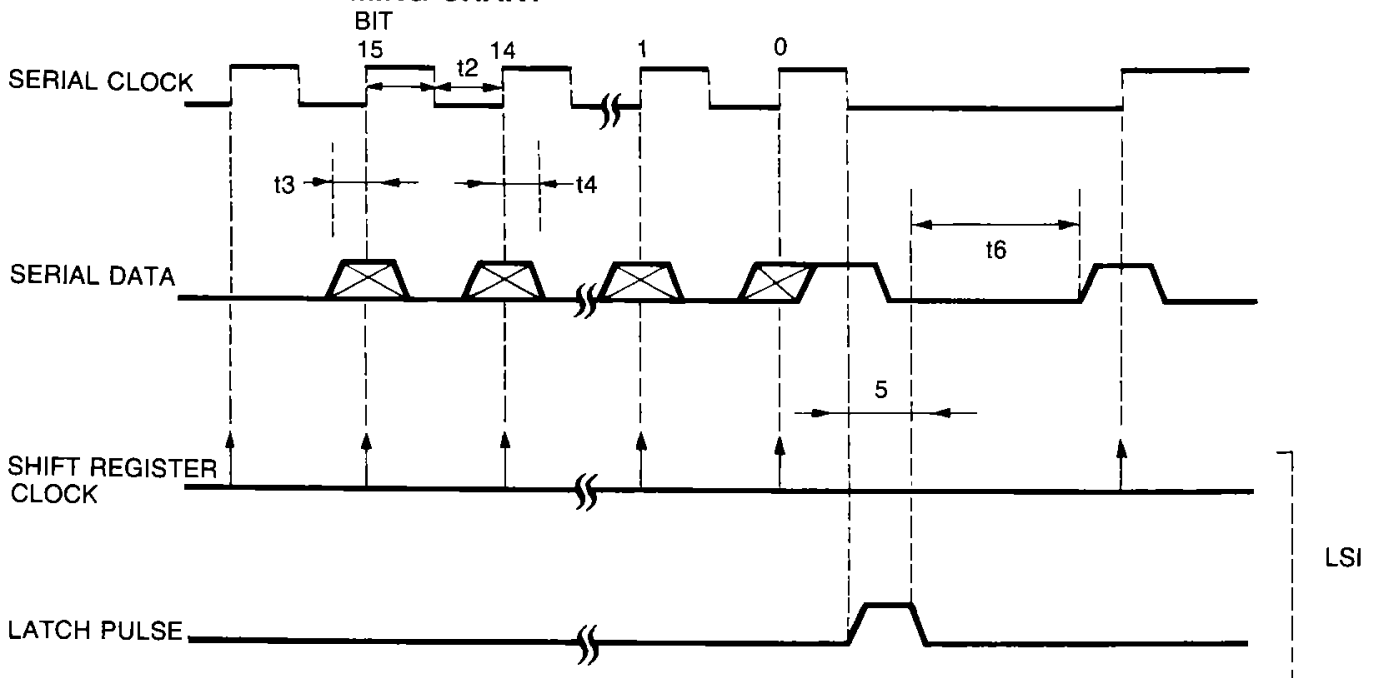
6. CAPSTAN GAIN

SWG	SWF	+6 dB	NTSC SP	NTSC LP	NTSC EP	PAL SP	PAL LP
OFF	OFF	OFF	SLOW	SLOW X1	SLOW X1, 2	SLOW	SLOW X1
ON	OFF	OFF	X1, 2	X2, 3, 4, 5	X3, 4, 7	X1, 2	X2, 3, 4, 5
OFF	ON	OFF	X3, 4	X7, 9	X9, 10, 13	X3, 4	X7, 9
ON	ON	OFF	X5, 7, 9	X10, 13, 15, 17	X15, 17, 21	X5, 7, 9	X10, 13, 15, 17
ON	ON	+6 dB	X10, 11, 12, 13 14, 15, 16	X22, 24, 26	X33, 35, 39	X10, 11, 12, 13 14, 15, 16	X22, 24, 26

7. CTL SCHMITT VTH

VTH	NTSC SP	NTSC LP	NTSC EP	PAL SP	PAL LP
± 150 mV ± 30 mV	SLOW	SLOW X1	SLOW X1	SLOW	SLOW X1
± 300 mV ± 60 mV	X1, 2	X2, 3, 4, 5	X2, 3, 4, 7	X1, 2	X2, 3, 4, 5
± 600 mV ± 80 mV	X3, 4, 5, 7, 9, 10, 11, 12, 13 14, 15, 16	X7, 9, 10, 13, 15, 17, 22, 24 26	X9, 10, 13, 15, 17, 21, 33, 35 39	X3, 4, 5, 7, 9, 10, 11, 12, 13 14, 15, 16	X7, 9, 10, 13, 15, 17, 22, 24 26
± 1000 mV ± 150 mV	111 MODE D7=1				

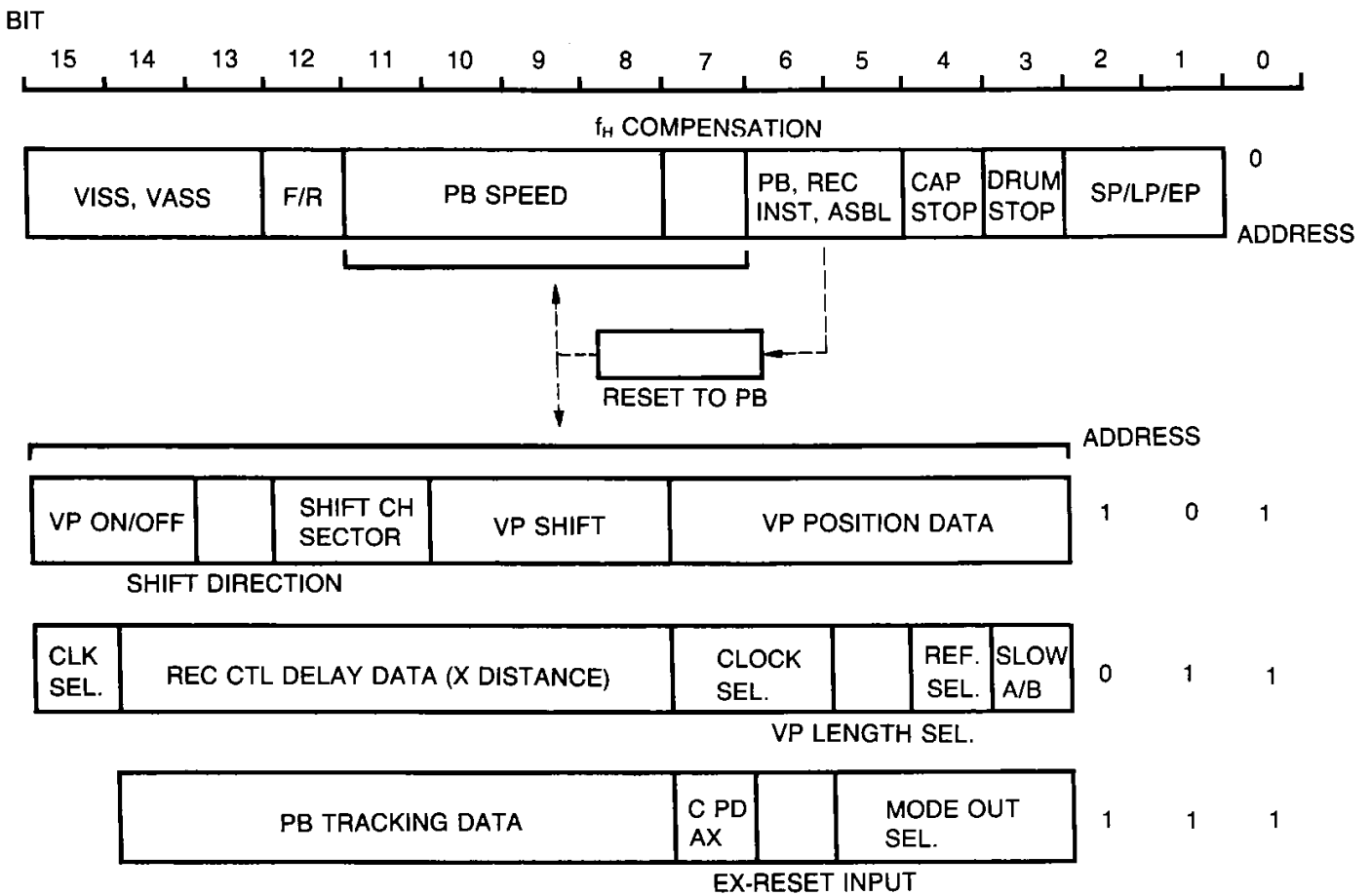
8. SERIAL INPUT TIMING CHART



$$t_1 \geq 1\mu\text{s}, t_2 \geq 1\mu\text{s}, t_3 \geq 0.3\mu\text{s}, t_4 \geq 0.3\mu\text{s}, t_5 \geq 0.5\mu\text{s}, t_6 \geq 0.5\mu\text{s}$$

- ① Previous 16 bit data become valid when serial data become "H" at serial clock negative edge.
- ② Serial data and clock are "L" state at t_6 after data latch and this period must be over 500ns.
- ③ Serial input is pulled-up by 10K Ω and be careful on tire delay. If you want to increase speed, then add a pull-up resistor externally.

9. SERIAL DATA INPUT REGISTER



- ① KA8320 includes 53 bit register. LSB 2~0 bit is the address of each register.
- ② AT POWER-ON, whole register presetted.
- ③ PB speed, f_H compensation, VP control register is resetted automatically when current mode changed into other mode except PB mode.
- ④ Capstan P/D fixed register is resetted at normal high-speed.

10. SERIAL DATA TABLE 1

15	14	13	12	11	10	9	8	7	6	5	4	3	2	1	0	Notes				
													0	0	0	SP				
													0	1	0	LP				
													1	0	0	EP				
												0			0	DRUM STOP & CAP PD FIX				
												1			0	DRUM ON				
											0				0	CAPSTAN STOP				
											1				0	CAPSTAN ON				
									0	0					0	REC				
									0	1					0	ASBL				
									1	0					0	INST				
									1	1					0	PB				
								0	1	1					0	NOR				
								1	1	1					0	f _H Alignment ON				
				0	0	0	0		1	1					0		NTSC		PAL	
				0	0	0	1		1	1					0	SP×1	LP×1	EP×1	SP×1	LP×1
				0	0	1	0		1	1					0	2	2	2	2	2
				0	0	1	1		1	1					0	3	3	3	3	3
				0	0	1	1		1	1					0	4	4	4	4	4
				0	1	0	0		1	1					0	5	5	7	5	5
				0	1	0	1		1	1					0	7	7	9	7	7
				0	1	1	0		1	1					0	9	9	21	9	9
				0	1	1	1		1	1					0	10	10	10	10	10
				1	0	0	0		1	1					0	11	22	33	11	22
				1	0	0	1		1	1					0	12	24	35	12	24
				1	0	1	0		1	1					0	13	26	39	13	26
				1	0	1	1		1	1					0	14	13	13	14	13
				1	1	0	0		1	1					0	15	15	15	15	15
				1	1	0	1		1	1					0	16	17	17	16	17

10. SERIAL DATA TABLE 1 (Continued)

15	14	13	12	11	10	9	8	7	6	5	4	3	2	1	0	Notes
				1	1	1	0		1	1					0	SLOW ① CAP P/D FIX
				1	1	1	1		1	1					0	SLOW ② CAP P/D FIX, DRUM P/D FIX
			0												0	FWD
			1												0	REV
0	0	0													0	DUTY DET. MODE
0	0	1													0	DUTY DET. MODE VISS REC FF RESET
0	1	0													0	VISS MODE
0	1	1													0	VISS MODE, VISS REC FF RESET
1	0	0													0	VISS MODE, VISS DET. FF RESET
1	0	1													0	VISS MODE, VISS DET. FF RESET VISS REC FF RESET
1	1	0													0	VISS MODE, VISS WRITE
1	1	1													0	WRITE MODE, VISS REC FF RESET

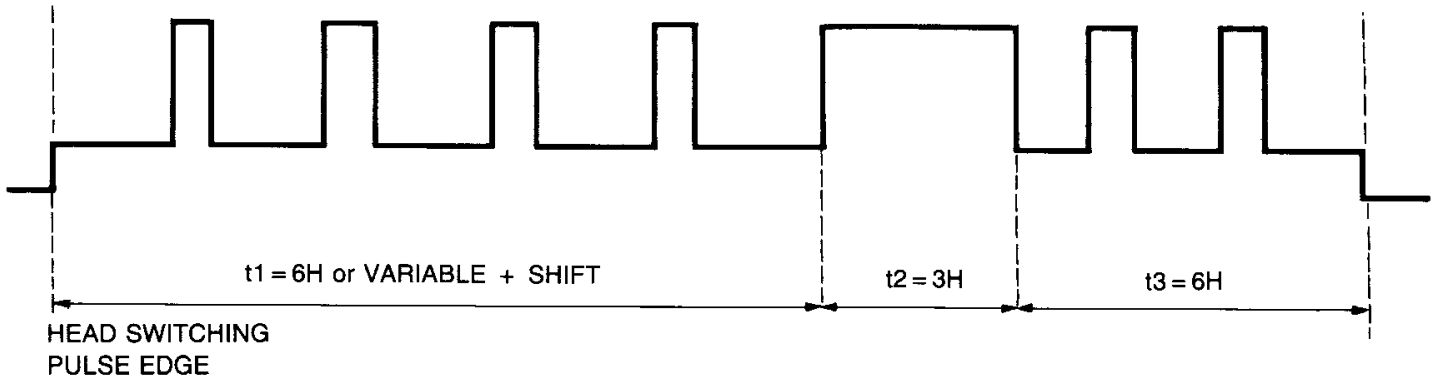
11. SERIAL DATA TABLE 2

15	14	13	12	11	10	9	8	7	6	5	4	3	2	1	0	Notes					
	MSB						LSB														
	*	*	*	*	*	*	*						1	1	1	PB. TRACKING DATA					
																(MODE CTL)					
																A	B	C	D	E	
												0	1	1	1				CFG/CD	CTL C/D	
												1	1	1	1				CFG	CFG30 (REC)	
									0	0			1	1	1	SP	SP	LP			
									0	1			1	1	1	SP	EP	LP			
										1	0		1	1	1	CTL DELAY COUNTER	H-OSC OSC	NOISE DET.			
									1	1			1	1	1	CAP PD	DRUM FG	DRUM PG			
								0					1	1	1	P.CTL SCHMITT 3					
								1					1	1	1	P.CTL SCHMITT ± 1000mVop C.P/D					
									0							PIN50 C.SYNC					
									1							PIN50 EX-RESET					
									MSB			LSB									
								*	*	*	*	*	1	0	1	VP POSITION DATA					
					0	0	0							1	0	1	VP SHIFT QUANTITY 0.1H				
					0	0	1							1	0	1	VP SHIFT QUANTITY 0.5H				
					0	1	0							1	0	1	VP SHIFT QUANTITY 1.0H				
					0	1	1							1	0	1	VP SHIFT QUANTITY 1.5H				
					1	0	0							1	0	1	VP SHIFT QUANTITY 2.0H				
					1	0	1							1	0	1	VP SHIFT QUANTITY 2.5H				
																		CH1	CH2		
			0	0										1	0	1	VP SHIFT SELECT	FIX	FIX		
			0	1										1	0	1	VP SHIFT SELECT	FIX	SHIFT		
			1	0										1	0	1	VP SHIFT SELECT	SHIFT	FIX		
			1	1										1	0	1	VP SHIFT SELECT	SHIFT	SHIFT		
		0												1	0	1	VP SHIFT DIRECTION (+)				
		1												1	0	1	VP SHIFT DIRECTION (-)				
0	0													1	0	1	VP OFF (L LEVEL OUTPUT)				
0	1													1	0	1	VP 3 VALUE (M LEVEL OUTPUT)				
1	0													1	0	1	VP ON (3 VALUE OUTPUT)				
1	1													1	0	1	VP MONITOR CUT (H LEVEL OUTPUT)				

12. SERIAL DATA TABLE 3

15	14	13	12	11	10	9	8	7	6	5	4	3	2	1	0	Notes	
	MSE						LSB										
	*	*	*	*	*	*	*						0	1	1	REC CTL DELAY (X VALUE ALIGNMENT)	
											0		0	1	1	REF SEL NOR	
											1		0	1	1	REF SEL FIELD DET	
										0			0	1	1	VP SEL NOR	
										1			0	1	1	VP SEL +6H	
1								0	0				0	1	1	CLOCK SEL 3 f _{sc}	
0								1	1				0	1	1	CLOCK SEL f _{sc}	
													0	0	1	1	SLOW A
													1	0	1	1	SLOW B
													0	0	0	1	TEST MODE

13. VERTICAL PULSE



At slow or $\times 2$ play mode, t_1 adjusted, else CH1-CH2 VP position would be fixed.

MODE		CH1	CH2
2 HEAD		FIX	FIX
DA-4	SP	FIX	VARYING
	SP	VARYING	FIX

Position adjustment by serial data 5 bit is as follows. while fixed value is about 6.0H.

NTSC	$64 (41.5-N)/f_{sc}$	3.0H ~ 11.7H
PAL	$64 (43.75-N)/f_{sc}$	2.9H ~ 9.9H

① VP SHIFT

BIT	13	12	11	10	9	8		3	2	1	SHIFT
				0	0	0					0.0 H
				0	0	1					0.5 H
				0	1	0					1.0 H
				0	1	1		1	0	1	1.5 H
				1	0	0					2.0 H
				1	0	1					2.5 H

② VP SHIFTING CH & SHIFTING DIRECTION

(\oplus / \ominus means delaying direction)

BIT	13	12	11	10	9	8		3	2	1	CH-1	CH-2
	0 1	0	0			—					FIX	FIX
	0	0	1			—					FIX	\oplus SHIFT
	1	0	1			—					FIX	\ominus SHIFT
	0	1	0			—		1	0	1	\oplus SHIFT	FIX
	1	1	0			—					\ominus SHIFT	FIX
	0	1	1			—					\ominus SHIFT	\oplus SHIFT
	1	1	1			—					\oplus SHIFT	\ominus SHIFT