

PLEASE CHECK WWW.MOLEX.COM FOR LATEST PART INFORMATION

Part Number: [0541028640](#)
Status: **Active**
Description: 0.50mm (.020") Pitch SlimStack™ Receptacle, Surface Mount, Dual Row, Vertical, 2.50mm (.098") Stacking Height, Gold Plating with Nickel Barrier, 40 Circuits

Documents:

[3D Model](#) [Product Specification PS-54102-012 \(PDF\)](#)
[Drawing \(PDF\)](#) [RoHS Certificate of Compliance \(PDF\)](#)

General

Product Family PCB Receptacles
 Series [54102](#)
 Application Board-to-Board
 Product Name SlimStack™

Physical

Circuits (Loaded) 40
 Color - Resin Black
 Durability (mating cycles max) 30
 Glow-Wire Compliant No
 Lock to Mating Part Yes
 Mated Height (in) 0.098 In
 Mated Height (mm) 2.50 mm
 Material - Metal Phosphor Bronze
 Material - Plating Mating Gold
 Material - Plating Termination Gold
 Number of Rows 2
 Orientation Vertical
 PCB Locator No
 PCB Retention None
 Packaging Type Embossed Tape on Reel
 Pitch - Mating Interface (in) 0.020 In
 Pitch - Mating Interface (mm) 0.50 mm
 Polarized to Mating Part No
 Polarized to PCB No
 Stackable No
 Temperature Range - Operating -40°C to +85°C
 Termination Interface: Style Surface Mount

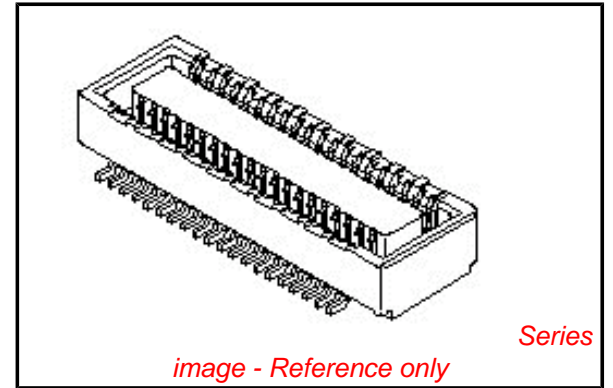
Electrical

Current - Maximum per Contact 0.5A
 Voltage - Maximum 50V

Material Info

Reference - Drawing Numbers

Product Specification PS-54102-012, RPS-54102-016
 Sales Drawing SD-54102-011, SD-54102-012



EU RoHS

**ELV and RoHS
 Compliant**
**REACH SVHC
 Contains SVHC: No**
**Halogen-Free
 Status**

China RoHS



**Need more information on product
 environmental compliance?**

Email productcompliance@molex.com
 For a multiple part number RoHS Certificate of
 Compliance, [click here](#)

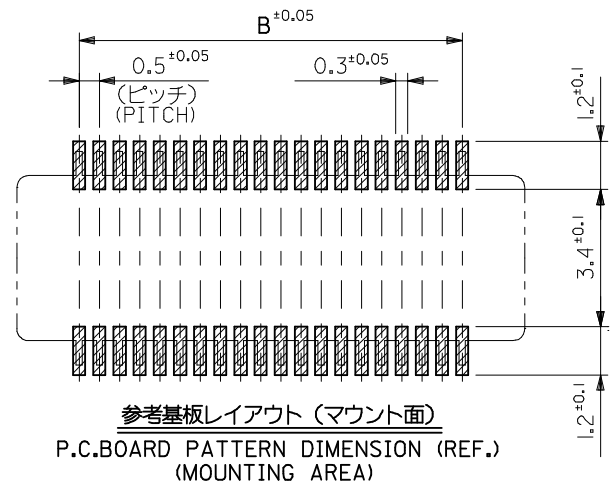
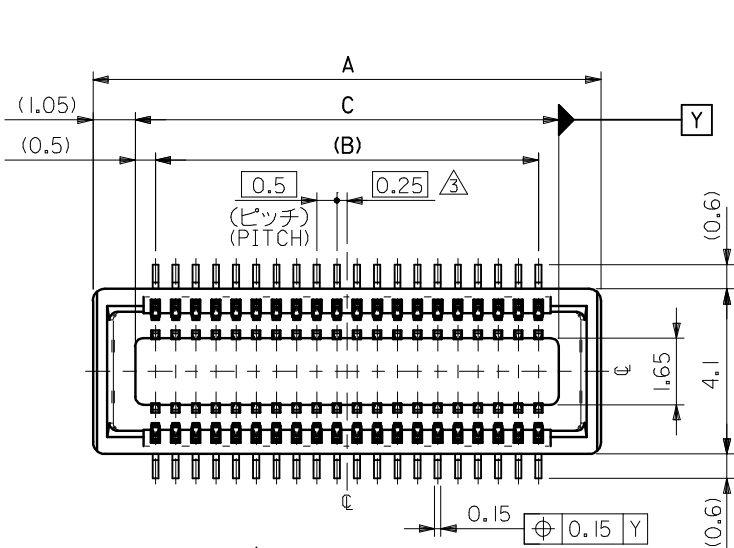
Please visit the [Contact Us](#) section for any
 non-product compliance questions.

Search Parts in this Series

[54102Series](#)

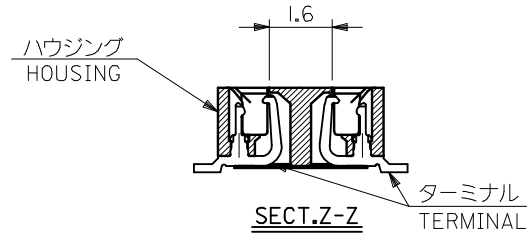
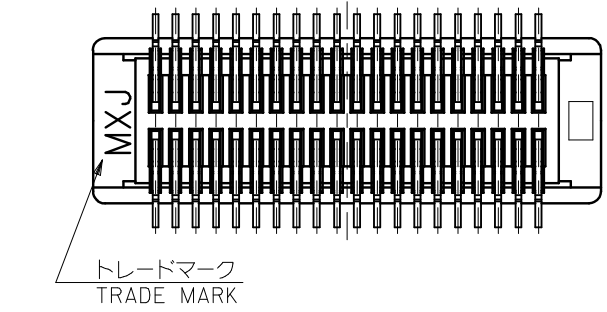
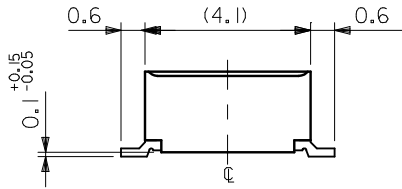
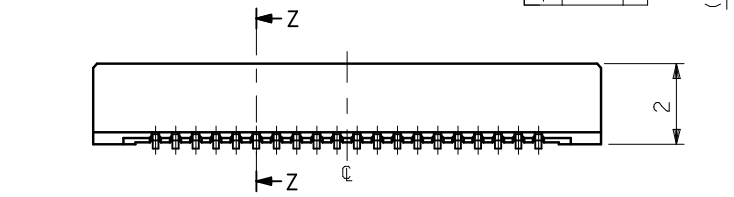
Mates With

[53885 PCB Header](#)



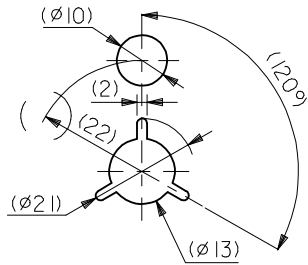
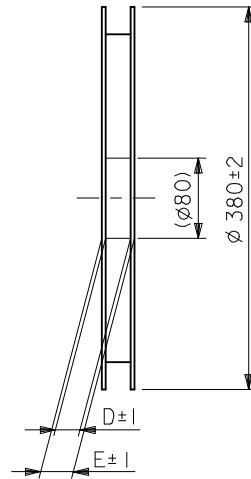
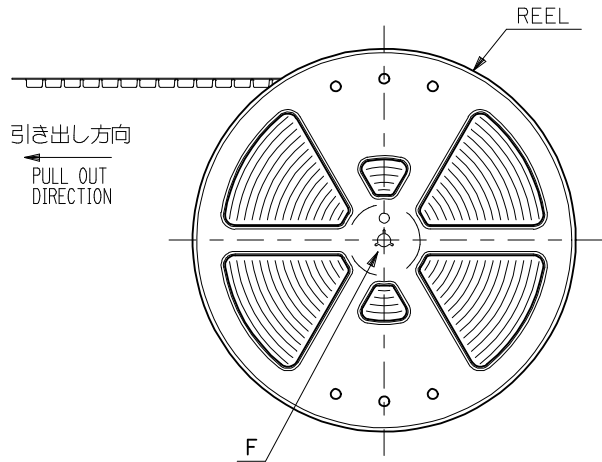
注記 NOTES:

1. 使用材料 MATERIAL
ハウジング: LCP
HOUSING ガラス充填, UL94V-0, 色: 黒
GLASS FILLED, UL94V-0, COLOR: BLACK
ターミナル: リン青銅 (t=0.15)
TERMINAL: PHOSPHOR BRONZE (t=0.15)
 2. メッキ仕様 PLATING
金メッキ 0.25 マイクロメートル以上 (コンタクト部)
GOLD(Au) 0.25 MICROMETER MINIMUM (CONTACT AREA)
金メッキ 0.05 マイクロメートル以上 (テール部)
GOLD(Au) 0.05 MICROMETER MINIMUM (TAIL AREA)
下地メッキ: ニッケルメッキ 1.5 マイクロメートル以上
UNDER PLATING : NICKEL 1.5 MICROMETER MINIMUM
*コンタクト部とテール部はニッケルメッキによって
分断されている金メッキです。
DIVIDE INTO PARTS THE GOLD PLATING OF
THE CONTACT PART AND THE TAIL PART BY
THE NICKEL PLATING.
- △ (全極数/2) = 偶数の場合に適用。
APPLY FOR (CIRCUIT/2) = EVEN.
- 4 嵌合相手: 53885 / 500334 シリーズ
MATE WITH: 53885 / 500334 SERIES.
 - 5 テール平坦度は、0.1MAX。
TAIL COPLANARITY TO BE 0.1 MAXIMUM.
 - 6 ELV及びRoHS適合品
ELV AND RoHS COMPLIANT.



| | | | | | |
|------|-----|------|------------|--------------|---------------|
| 10.5 | 9.5 | 12.6 | 54102-8640 | 54102-8740 | 40 |
| C | B | A | EMBSTP PKG | MATERIAL NO. | 極数 CIRCUIT |

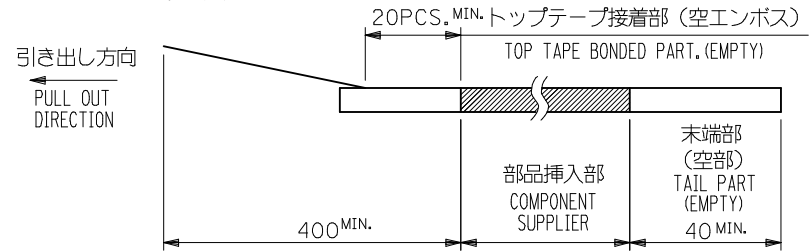
| | | | | | | | | | | | |
|--|-----------------------|--|--|--|--|---|--|--|--|----------------------|--|
| RELEASED EC NO.: J2009-0577 DRW: R. NAKATA 2008/09/08 CHK: D. MATSUMOTO 2008/09/08 APPR: N. UKITA 2008/09/08 | DESCRIPTION REV: A | GENERAL TOLERANCES (UNLESS SPECIFIED) | | DIMENSION STYLE MM ONLY | | SCALE --- | | DESIGN UNITS METRIC | | MODEL No. 54102-87** | |
| | | 10 UNDER ±0.2 | | DRAWN BY R. NAKATA DATE 2008/09/04 | | TITLE 0.5 B-TO-B CONN REC HSG ASSY (HGT=2.5) [NI BARRIER]-LEAD FREE- | | THIRD ANGLE PROJECTION | | MOLEX INCORPORATED | |
| | | 10 OVER 30 UNDER ±0.25 | | CHECKED BY H. MATSUMOTO DATE 2008/09/04 | | MOLEX | | DOCUMENT NO. SD-54102-011 | | SHEET NO. 1 OF 1 | |
| | | 30 OVER ±0.3 | | APPROVED BY N. UKITA DATE 2008/09/04 | | SEE CHART | | THIS DRAWING CONTAINS INFORMATION THAT IS PROPRIETARY TO MOLEX INCORPORATED AND SHOULD NOT BE USED WITHOUT WRITTEN PERMISSION | | | |
| ANGULAR ±3 ° | | DRAFT WHERE APPLICABLE MUST REMAIN WITHIN DIMENSIONS | | MATERIAL NO. | | | | | | | |



DETAIL F

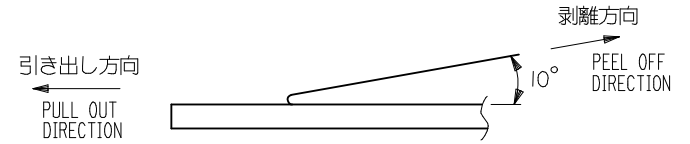
NOTES

- 製品詳細寸法については図面 SD-54102-011 を参照下さい。
RE DETAILED DIMENSION, SEE SD-54102-011 .
- 梱包数量：3000個/リール
NUMBER OF CONNECTORS : 3000PCS/REEL
- リードテープ長さ LEAD TAPE LENGTH



- トップテープの剥離強度：0.1～1.3N {10～130gf}
(剥離方向は下図参照)

尚、本規格値は出荷時に適用。(但し、輸送時に剥離が発生しないこと。)
PEELING OFF FORCE OF TOP TAPE : 0.1～1.3N {10～130gf}
(PEELING DIRECTION AS SHOWN IN FOLLOWING FIG.)
THIS REQUIREMENT SHOULD BE APPLIED AT SHIPMENT.
PEEL OFF SHOULD NOT BE ALLOWED , DURING TRANSPORTATION.



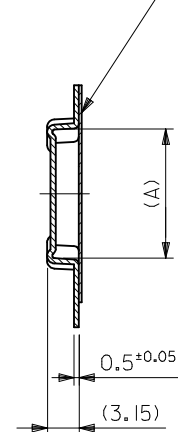
- 材料 (MATERIAL)
キャリアテープ (CARRIER TAPE) : ポリプロピレン (POLYPROPYLENE)
トップテープ (TOP TAPE) : PET , PE , PEF
リール (REEL) : ポリスチレン (P S) <リサイクル材を含む>
POLYSTYRENE (P S) <RECYCLE MATERIAL CONTAINED>
- ELV及びRoHS適合品
ELV AND RoHS COMPLIANT.

54102-86** MODEL NO.

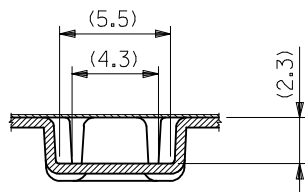
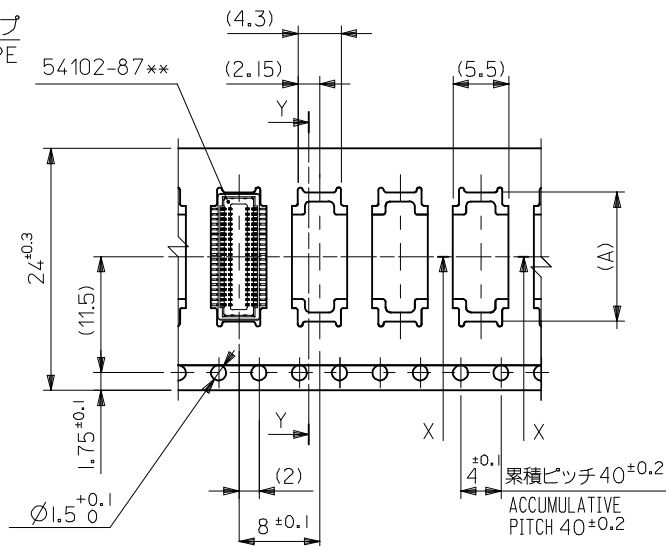
| | | | | | | | |
|---|---------------------------------------|---|----------------------------|------------------------------|--|------------------------|------------------------|
| RELEASED EC NO: J2009-0577 DRW: NAKATA 2008/09/08 CHK: MATSUMOTO 2008/09/08 APPR: NUKITA 2008/09/08 | GENERAL TOLERANCES (UNLESS SPECIFIED) | | DIMENSION STYLE MM ONLY | | SCALE --- | DESIGN UNITS METRIC | THIRD ANGLE PROJECTION |
| | 10 UNDER | ±0.2 | DRAWN BY R. NAKATA | DATE 2008/09/04 | TITLE EMBSTP PKG FOR 0.5 B/B REC HSG ASSY (H=2.5) [NI BARRIER]-LEAD FREE- | | |
| | 10 OVER 30 UNDER | ±0.25 | CHECKED BY H. MATSUMOTO | DATE 2008/09/04 | | | |
| | 30 OVER | ±0.3 | APPROVED BY N. UKITA | DATE 2008/09/04 | MOLEX INCORPORATED | | |
| ANGULAR ±3 ° | | MATERIAL NO. SEE CHART | | DOCUMENT NO. SD-54102-012 | | | |
| DRAFT WHERE APPLICABLE MUST REMAIN WITHIN DIMENSIONS | | THIS DRAWING CONTAINS INFORMATION THAT IS PROPRIETARY TO MOLEX INCORPORATED AND SHOULD NOT BE USED WITHOUT WRITTEN PERMISSION | | | | | |

引き出し方向
PULL OUT DIRECTION

トップテープ
TOP TAPE



SECT:Y-Y



SECT:X-X

24mm幅キャリアテープ
24mm WIDTH CARRIER TAPE

| | | | | | |
|--------------------------------|------|------|------|--------------|----------------|
| 24 | 29.4 | 25.4 | 12.8 | 54102-8640 | 40 |
| キャリアテープ幅 CARRIER TAPE WIDTH | E | D | (A) | MATERIAL NO. | 極致 CIRCUITS |

MODEL NO. 54102-86**

| | | | | | | | | | | | |
|--|----------------------|--|-------|----------------------------|------------|---|--|------------------------|--|---------------------------|--|
| RELEASED EC NO. J2009-0577 DRW:NAKATA 2008/09/08 CHK:D:MATSUMOTO 2008/09/08 APPR:NUKITA 2008/09/08 | DESCRIPTION REV A | GENERAL TOLERANCES (UNLESS SPECIFIED) | | DIMENSION STYLE MM ONLY | | SCALE --- | | DESIGN UNITS METRIC | | THIRD ANGLE PROJECTION | |
| | | 10 UNDER | ±0.2 | DRAWN BY | DATE | TITLE | | | | | |
| | | 10 OVER 30 UNDER | ±0.25 | R. NAKATA | 2008/09/04 | EMBSTP PKG FOR 0.5 B/B REC HSG ASSY (H=2.5) [NI BARRIER]-LEAD FREE- | | | | | |
| | | 30 OVER | ±0.3 | H. MATSUMOTO | 2008/09/04 | | | | | | |
| ANGULAR ±3 ° | | APPROVED BY N. UKITA 2008/09/04 | | MATERIAL NO. SEE CHART | | DOCUMENT NO. SD-54102-012 | | SHEET NO. 2 OF 2 | | | |
| DRAFT WHERE APPLICABLE MUST REMAIN WITHIN DIMENSIONS | | THIS DRAWING CONTAINS INFORMATION THAT IS PROPRIETARY TO MOLEX INCORPORATED AND SHOULD NOT BE USED WITHOUT WRITTEN PERMISSION | | | | | | | | | |