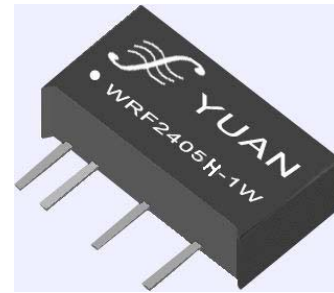


www.DataSheet4U.com

- **SHORT CIRCUIT PROTECTION**
- **SIP7 PACKAGE STYLE**
- **SINGLE OUTPUT VOLTAGE**
- **INDUSTRIAL STANDARD PIN-OUT**
- **3KVDC ISOLATION**
- **REGULATED OUTPUT VOLTAGE**
- **PCB MOUNTING**


Application:

- **Specialy for electrical power RS485 communication isolation electric load management terminal**
- **RS485/RS232/RS422/USB/IEEE1394 interface**
- **Isolation static(>8KV)**

ELECTRICAL SPECIFICATIONS:

(All specifications tested typically @ 25°C, humidity<75%, nominal input and rated output unless otherwise noted.)

OUTPUT SPECIFICATIONS

Items:	Testing condition	Min	Typ	Max
Output accuracy:	full load from 0-100%			±2%
Output power:				2W
Line regulation:	Input voltage from low to full load	+/- 0,5 % max., (3.3 VDC output +/- 1 % max)		
Load regulation:	No load to full load	+/- 0,5 % typ., +/- 1 % max.		
Ripple and noise:	20MHz BW			30mVp-p
Temperature drift:				±0.02 %/°C
Minimum load				10%
Switching frequency			60K HZ	
Short circuit protection	Continuous >30seconds, Automatic Recovery			

INPUT SPECIFICATIONS

Items:	Testing condition	Min	Typ	Max
Input voltage range	5VDC nominal input		4.75-5.25VDC	
	12VDC nominal input		10.8-13.2VDC	
	15VDC nominal input		13.5-16.5VDC	
	24VDC nominal input		21.6-26.4VDC	
Filter	Ceramic Capacitors			

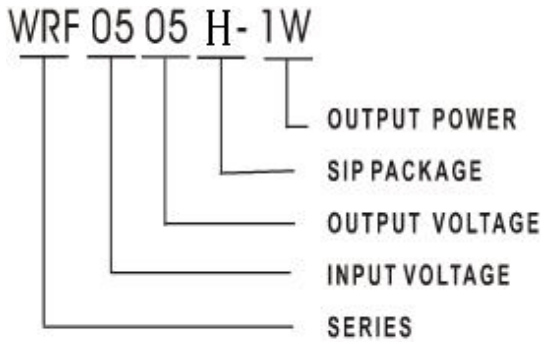
COMMON SPECIFICATIONS

Items		Min	Typ.	Max
Operating temperature range		-25°C		+71°C
Storage temperature range		-55°C		+105°C
Humidity				<90%
Cooling	Free Air Convection			
Isolation voltage (VDC)	Input to Output			3,000
Isolation resistance (ohms)		10 ⁹		
Isolation capacitance (pF)			60	
Leak Current		1mA		

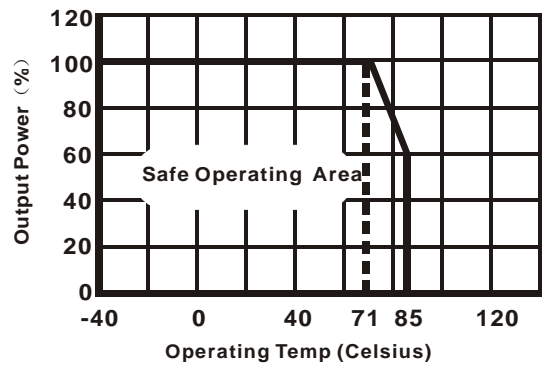
Efficiency (%)	See Product List	68		75
Case material	Non-conductive black plastic			
Potting material	Epoxy Resin UL94-V0			
Packing material	Tube			
Dimension (mm / inch)	SIP:19.60*6.00*10.00 (0.77*0.23*0.39) DIP:20.40*10.0*8.20 (0.80*0.39*0.32)			
Weight (g)	10			
MTBF (Hrs)	>1,000,000			

Part No.	Vin(VDC)	Iin(No-Load) mA	Iin(Full-Load) mA	Vout (VDC)	Iout,Max(mA)	Eff.
WRF0505H-W75	5	22	220	5	150	69
WRF0505H-1W	5	28	300	5	200	70
WRF0512H-1W	5	25	312	12	84	74
WRF1212H-1W	12	22	123	12	84	78
WRF1209H-1W	12	16	123	9	111	78
WRF2405H-1W	24	7	64	5	200	80
WRF2409H-1W	24	10	63	9	111	80
WRF2412H-1W	24	10	63	12	84	80
WRF0512H-2W	5	45	545	12	167	72
WRF0505H-2W	5	50	615	5	400	65
WRF0509H-2W	5	47	545	9	200	66
WRF1212H-2W	12	35	245	12	167	68
WRF2405H-2W	24	16	128	5	400	65

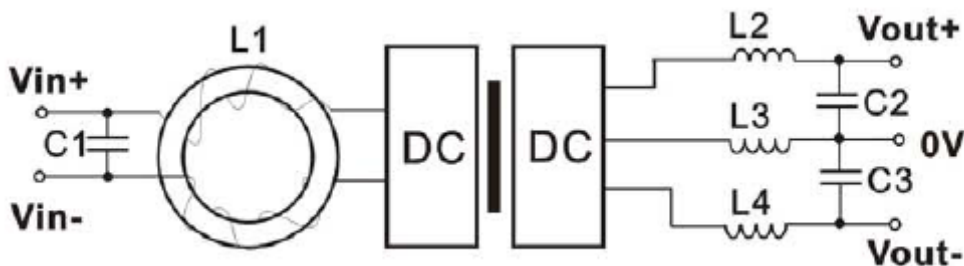
NOMENCLATURE



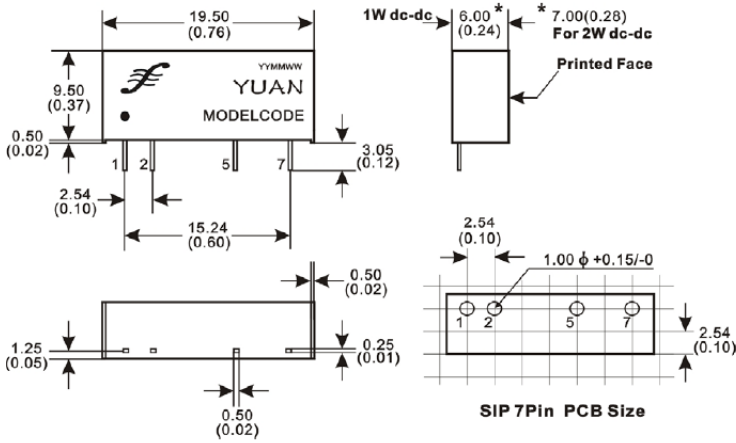
TEMPERATURE DERATING GRAPH



TYPICAL CONNECTION



OUTLINE DIMENSION



PINS DESCRIPTION

Pin	Connection
1	Vin+
2	Vin-
5	GND
7	Vout+

SHENZHEN SUNYUAN TECHNOLOGY CO., LTD.

Duoli Industrial Zone, Meihua Rd.

Futian District, Shenzhen, China

E-mail: sales02@szsunyuan.com

Tel: +86-755-83100080

Fax: +86-755-83116652