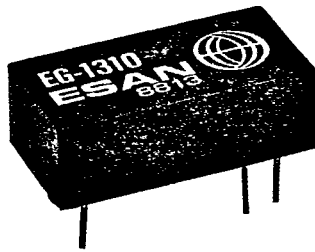


DC/DC Converter

EG Series



Features:

- Up to 1.0 watt output
- Low Profile, ULTRA-miniature size
- Low output ripple
- No heat sink required
- No output capacitor required

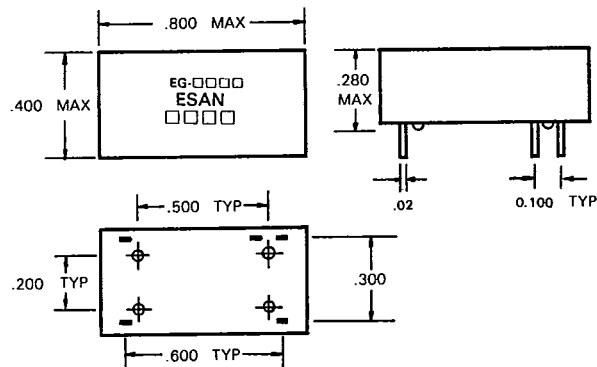
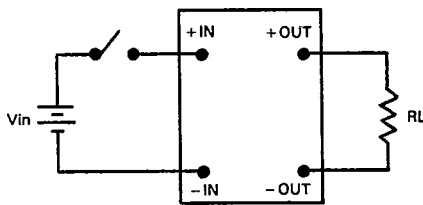
General Specifications:

- Efficiency (at full load).....35% ~ 60%
- Isolation Voltage..... 500 V_{DC}
- Operating Temp. Range.....0°C ~ +70°C
- Storage Temp. Range..... -55°C ~ +125°C
- Operating Frequency.....20 ~ 40KHz

Electrical Specifications:

- Input Voltage Range..... ± 5%
- Output Voltage Accuracy..... ± 5%
- Load Regulation..... ± 0.5%
- Line Regulation..... ± 0.3%
- Short Circuit Protection..... Short Term

PART NO.	INPUT VOLTAGE	OUTPUT VOLTAGE	MAX. LOAD CURRENT (mA)	MAX. OUTPUT POWER (watt)	OUTPUT RIPPLE mVp-p @FULL	FULL LOAD INPUT CURRENT (mA)	NO LOAD INPUT CURRENT (mA)	EFF.@FLL (%)	
								HIGH LINE	LOW LINE
EG-1110	5	5	150	0.75	75	405	88	34	42
EG-1310	5	12	83	1.00	50	400	88	45	56
EG-1410	5	15	67	1.00	50	392	86	45	57
EG-3110	12	5	150	0.75	75	149	27	38	48
EG-3310	12	12	85	1.00	50	157	32	47	60
EG-3410	12	15	67	1.00	50	152	34	49	62
EG-5110	24	5	150	0.75	75	76	16	37	47
EG-5310	24	12	83	1.00	50	82	19	45	58
EG-5410	24	15	67	1.00	50	77	19	47	61



Unit: Inch