

Technical Information

No. FO 5042

Edition: 03/03 - subject to change

Supersedes:

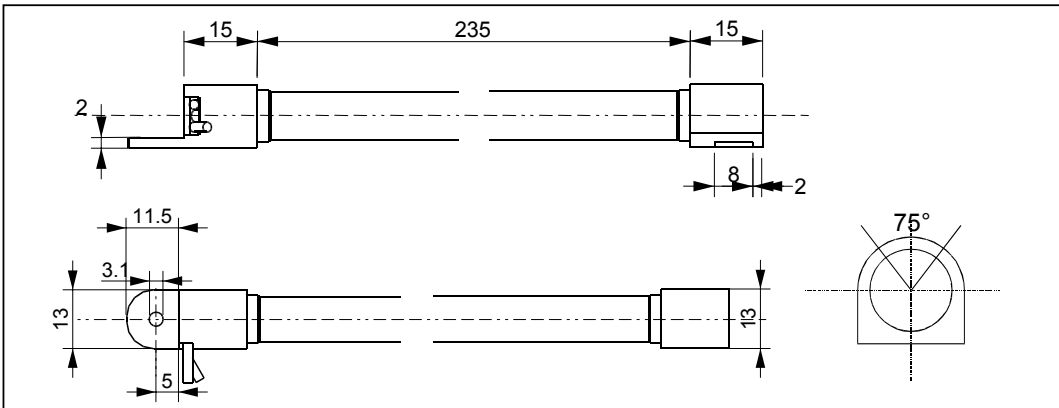
Status: initial

Linear Excimer Lamp

LINEX[®] LX24T3/956/A4

■ Product description

The OSRAM LINEX[®] LX24T3/956/A4 is a dielectric barrier discharge lamp system. It consists of an aperture lamp and an inverter. It is especially used for the exposure process in digital copiers and scanners. The lamp provides an illuminance of 48,000 lux in white (triphosphor). The Xenon gas discharge enables instant light within a few milliseconds. The light output shows no temperature dependence as well as a steady light emission. Since OSRAM patented internal electrodes are used no high voltage isolation is needed.



■ Lamp technical data ¹

| | | | | |
|--|---------------|-----------------------------|------|-------|
| Order reference | LX24T3/956/A4 | Lamp overall length L_o | mm | 267,5 |
| System power consumption | W 24 | Inner emission length L_i | mm | |
| Lamp operating frequency | KHz > 80 | 80% of center illuminance | mm | 180 |
| Rated lamp voltage | KV < 3 | Outer diameter base D | mm | |
| Illuminance ² | Lx 48,000 | Outer diameter glass tube | mm | 10.0 |
| Color coordinates ² : x / y | 0.324 / 0.336 | Aperture α | deg. | 75 |
| Maintenance >80% | Hrs. 1000 | | | |
| Lamp weight | g 24 | | | |
| Cable length | mm 230 | | | |

¹ ambient room temperature of 25°C

² measured at a distance of 8mm from the aperture by Minolta T-1M

Note: lamp base design on customer request possible

■ DC-HV inverter technical data ¹

| | |
|---|-------------------------------|
| Order reference | QT LINEX [®] 1x24/24 |
| Inverter size | Mm 135 (L) x 40 (W) x 28 (H) |
| Inverter weight | G 110 |
| Nominal/Min./Max. input voltage | Vdc 24 / 21.6 / 26.4 |
| Nominal/Maximum input current | A 1.0 / 1.1 |
| Typical input inrush current ³ | A 2 |

³ switch on by lamp enable

The inverter provides an electrical pulse wave to the lamp.

The lamp system is covered by one or more of the following patents:

WO 94/23442, WO 98/49712. Other patents not listed may apply or pending.

www.DataSheet4U.com

Technical Information

No. FO 5042

Edition: 03/03 - subject to change

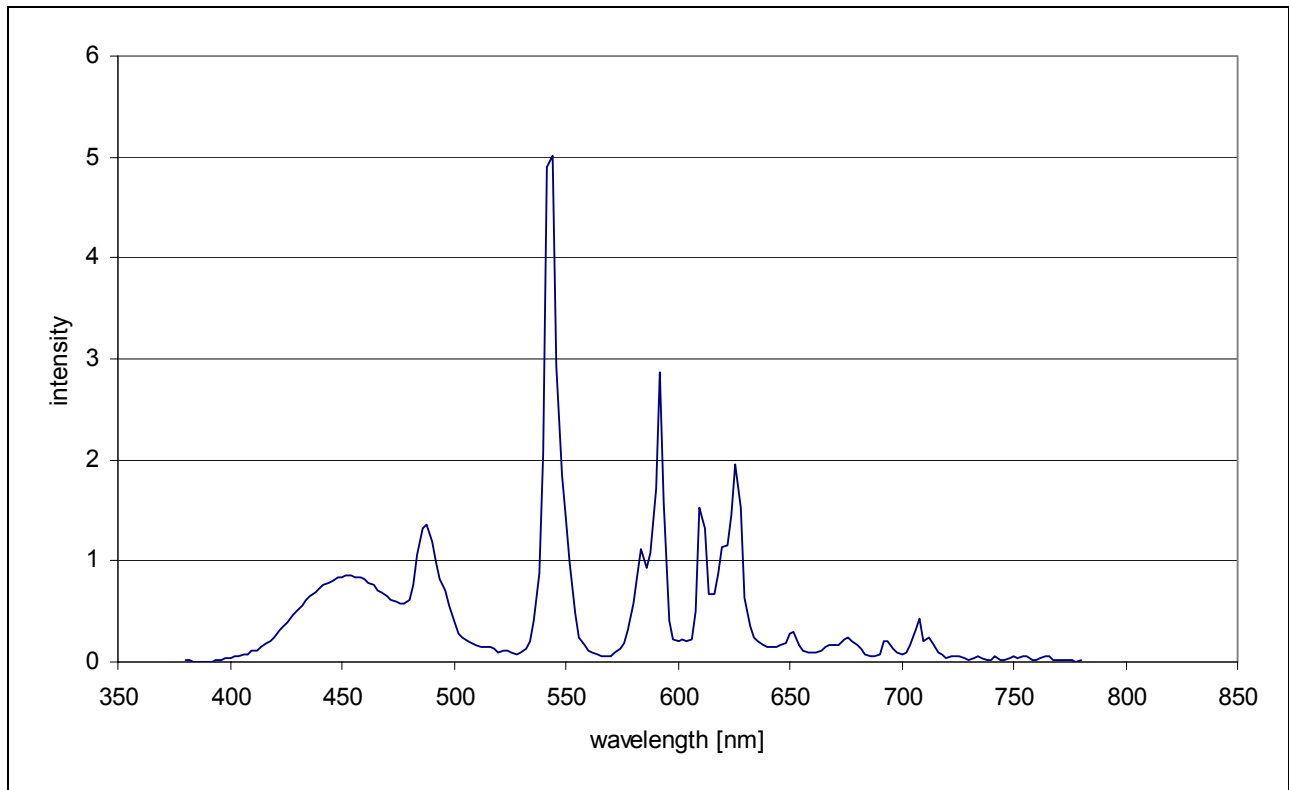
Supersedes:

Status: initial

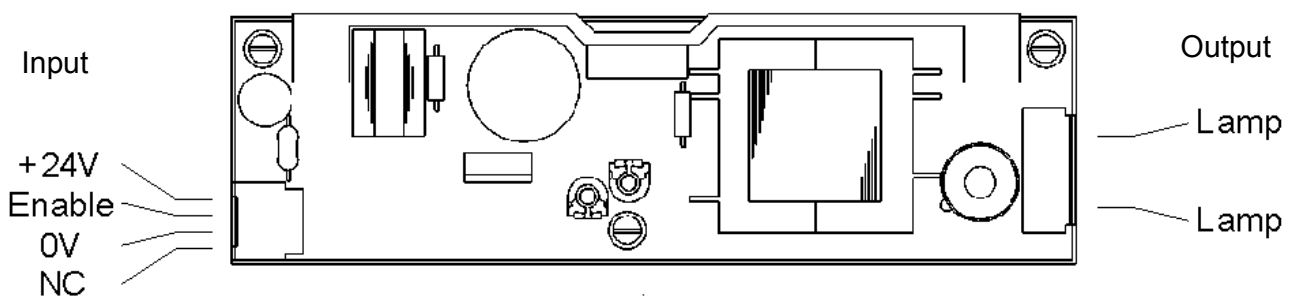
Linear Excimer Lamp

LINEX[®] LX24T3/956/A4

■ Lamp spectrum



■ Connection drawing



| | |
|--------|---|
| +24V | input voltage |
| Enable | connected to ground = operating open = non operating |
| 0V | ground |
| NC | not connected |