

Digital Delay Unit

SERIES: DDU-37

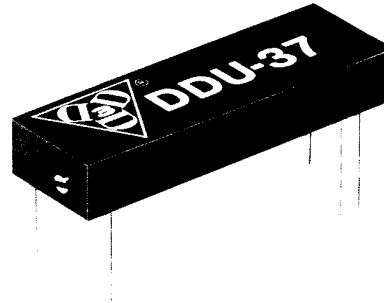
**Continuously Variable
T²L Interfaced**

**data
delay
devices, inc.**



Features:

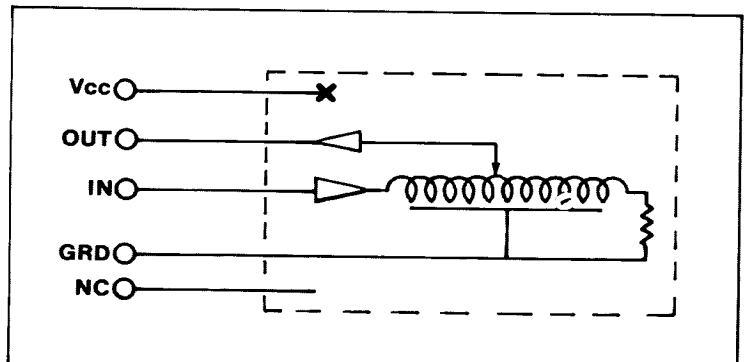
- Input & output fully TTL Interfaced & buffered.
- Low profile.
- Commercial & military type.
- Continuously adjustable.
- Multi-turn adjusting screw (40 turns approx.).



Specifications:

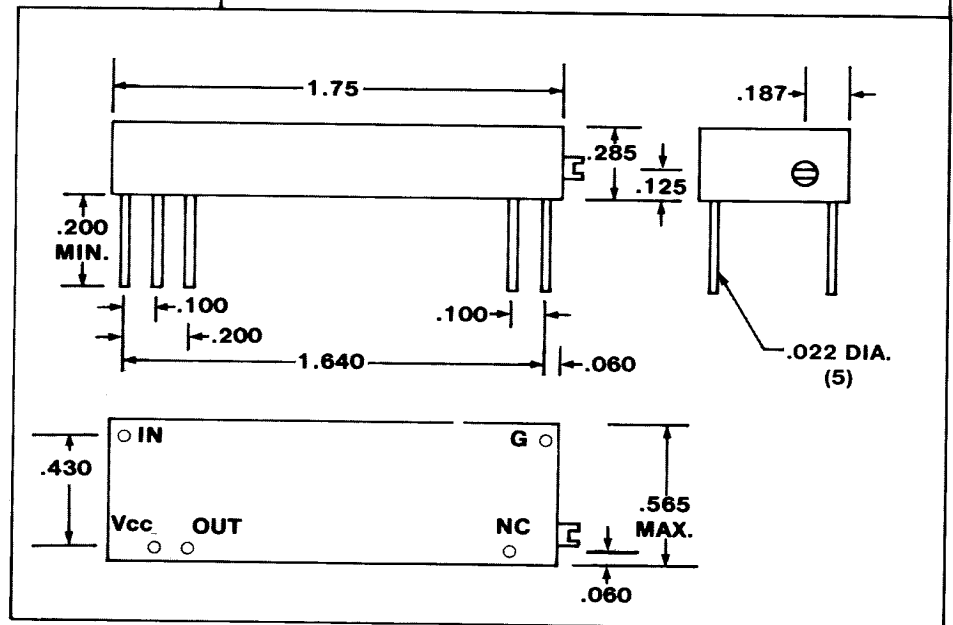
- Input signal requirement: TTL logic.
- Output fan-out: TTL Schottky load.
- Inherent delay: 10 NS typ.
- Delay resolution: .12 NS.
- Output rise-time: 4 NS typ.
- Temperature coefficient: 100 PPM/°C.
- Temperature range: 0°C to 70°C standard. (-55°C to +125°C on request)*
- Supply voltage: 5.0 Vdc ±5%.
- Power dissipation: 375 MW max.

* Add "M" after Part No. Ex.: DDU-37-50M.



Part No.	Min. Delay Variation (NS)
DDU-37-25	15
DDU-37-30	20
DDU-37-40	30
DDU-37-50	40
DDU-37-60	50
DDU-37-70	60
DDU-37-80	70
DDU-37-100	90
DDU-37-120	100
DDU-37-150	130
DDU-37-200	180

Other delay times available on request.



3 Mt. Prospect Avenue, Clifton, New Jersey 07013 ■ (201) 773-2299 ■ FAX (201) 773-9672 ■ TWX 710-989-7008