

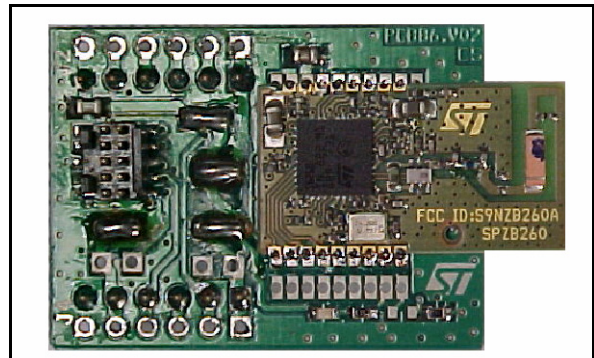


SPZB260ADP

Adapter board

Features

- Easy interface for SPZB260 module
- Single supply from 2.1 to 3.6 V
- Two 6-pin connectors to access EZSP
- 10 pin InSight™ port connector for debug
- Access to SIF signals
- Access to the InSight™ Desktop packet trace interface
- LEDs for link activity indication



Description

SPZB260ADP is the adapter board for the ZigBee® module SPZB260.

It provides an easy way to interface the SPZB260 module with the development kit during the development and deployment phase of a ZigBee® application.

It contains two 6 pins connectors to access the EmberZNet™ serial protocol (EZSP) and the SPZB260 module SPI, SIF signals and voltage supply; in addition a keyed 10 pin connector allow the connectivity of the SIF and PTI signals with the InSight™ Desktop for debug.

A LED indicator is driven by a Link Activity signal to provide a visual indication of the module behavior.

As SPZB260ADP is a passive interface of the SPZB260 module, for the electrical characteristics, please refer to the SPZB260 module datasheet.

Contents

1	Recommended operating conditions	3
2	Connections	3
2.1	J1 connector	3
2.2	J2 and J4 connectors	4
3	Device description	6
3.1	LED indicator	6
3.2	Jumpers	6
3.3	Configuration jumpers	6
3.4	Adapter layout	7
4	Electrical drawing	8
5	Mechanical drawing	9
6	Revision history	10

1 Recommended operating conditions

Table 1. Recommended operating conditions

Symbol	Parameter	Conditions	Min	Typ	Max	Unit
VDD	Board supply voltage	- 40 °C < T < +85 °C	2.1	3	3.6	V
T _{STG}	Operating ambient temperature		- 40		+ 85	°C

2 Connections

2.1 J1 connector

J1 is the 10-pin, dual-row, 0.05-inch pitch InSight™ connector provided for programming and debug interface of the SPZB260 module. It contains the four SIF signals (SIF_MOSI, SIF_MISO, SIF_LOADB, SIF_CLK), two packet trace signals (PTI_EN and PTI_DATA), voltage and ground connections.

Through the InSight™ port cable, it connects directly to the InSight™ Adapter, which allows programming and debug access within InSight™ Desktop.

The part used on the adapter is from Samtec (MFG P/N: FTSH-105-01-F-DV-K); it is keyed to guarantee the right connection with the InSight™ port cable.

Figure 1. InSight™ port pin out (J1)

V _{DD}	1	2	SIF_MISO
GND	3	4	SIF_MOSI
GND	5	6	SIF_CLK
SIF_LOADB	7	8	RSTB
PTI_EN	9	10	PTI_DATA

Figure 2. J1 connector

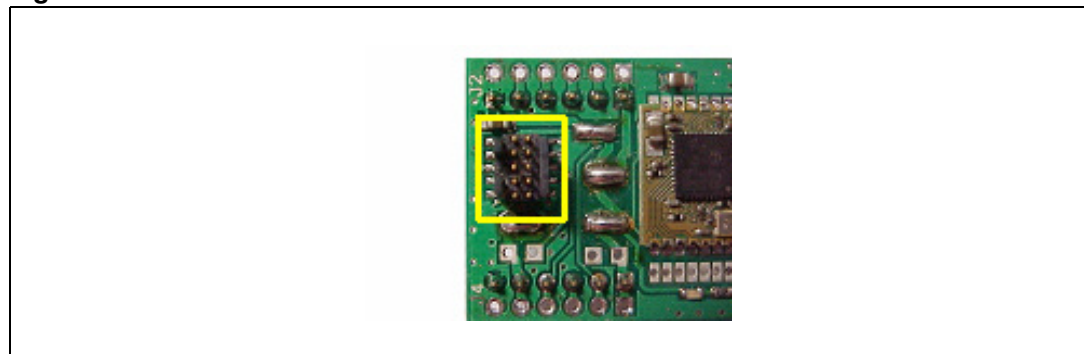


Table 2. InSight™ port pins (J1)

Pin number	Signal name	Direction	Description
1	Vdd	Power	2.1 to 3.6 V supply voltage
2	SIF_MISO	Output	Serial interface, master in / slave out
3	GND	Power	Ground connection
4	SIF_MOSI	Input	Serial interface, master out/ slave in
5	GND	Power	Ground connection
6	SIF_CLK	Input	Serial interface, clock signal
7	SIF_LOADB	I/O	Serial interface, load strobe
8	RSTB	Input	Active low reset
9	PTI_EN	Output	Packet trace frame signal
10	PTI_DATA	Output	Packet trace data signal

2.2 J2 and J4 connectors

Two 6 pin, single -row, 0.1-inch (2.54 mm) pitch connector on the bottom side of the adapter allows access to the SPZB260US module by means a synchronous (SPI) or asynchronous (UART) serial line.

This connector attaches directly to the Breakout Board and provides a robust and stable interface to the host microcontroller.

J2 and J4 are 2.54 mm pitch header (i.e Molex: 22-28-4063).

Figure 3. Pin out (J2 and J4)

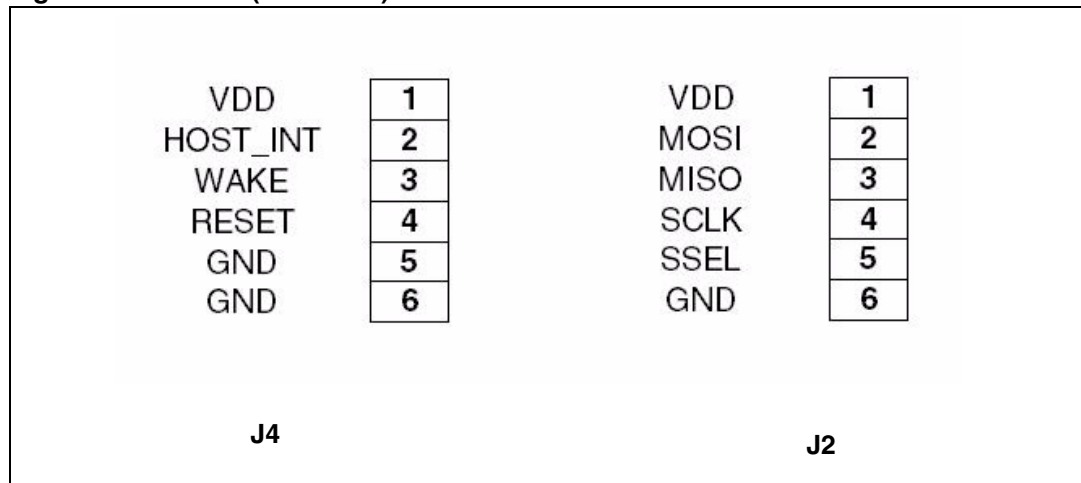


Figure 4. J2 and J4 connector

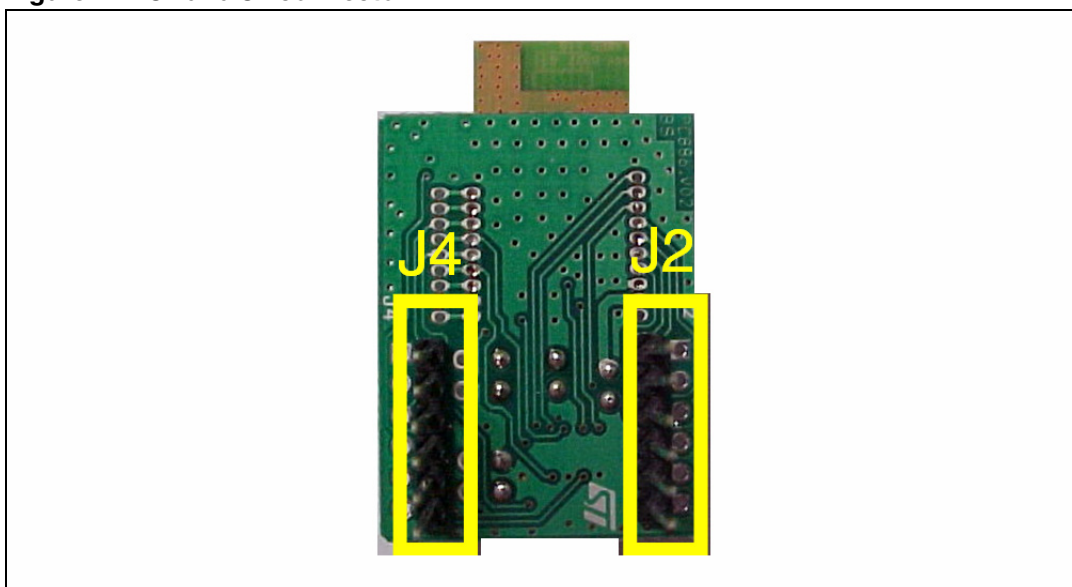


Table 3. J2 pins

Pin number	Signal name	Direction	Description
1	VDD	Power	2.1 to 3.6 V supply voltage
2	MOSI	Input	SPI data, master out/ slave in (from Host to SPZB260)
3	MISO	Output	SPI data, master in / slave out (from SPZB260 to Host)
4	SLCK	Input	SPI clock (Host to SPZB260)
5	SSEL	Input	Active low SPI slave select (Host to SPZB260)
6	GND	Power	Ground connection

Table 4. J4 pins

Pin number	Signal name	Direction	Description
1	VDD	Power	2.1 to 3.6 V supply voltage
2	HOST_INT	Output	Host interrupt (from SPZB260 to Host)
3	WAKE	Input	Wake interrupt (from Host to SPZB260)
4	RSTB	I/O	Active low chip reset
5	GND	Power	Ground connection
6	GND	Power	Ground connection

3 Device description

3.1 LED indicator

A LED indicator, L1, is provided on the adapter; this LED is connected to the SPZB260 module (pin 16) which make available the Activity signal giving a visual indication of the behavior of the module.

3.2 Jumpers

Six jumpers are provided on the adapter:

- JP1 - between pin 1 of J2 connector and SPZB260 power supply pin
- JP2 - between pin 1 of J4 connector and SPZB260 power supply pin
- JP3 - between pin 1 of J1 connector (“10 pin InSight™ connector”) and SPZB260 power supply pin

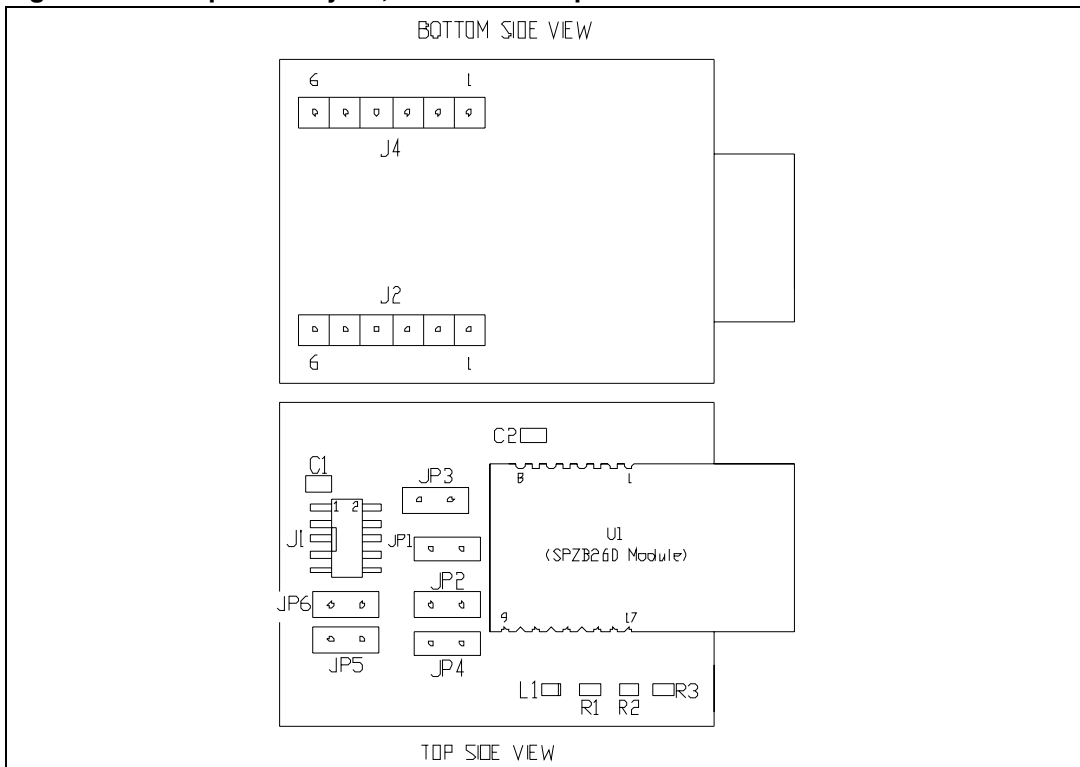
These jumpers can be used to separate the voltage supply source and to measure the current consumption; in normal operation they should be closed.

3.3 Configuration jumpers

- Module SPZB260
 - JP4 JP5: open
 - JP6: closed

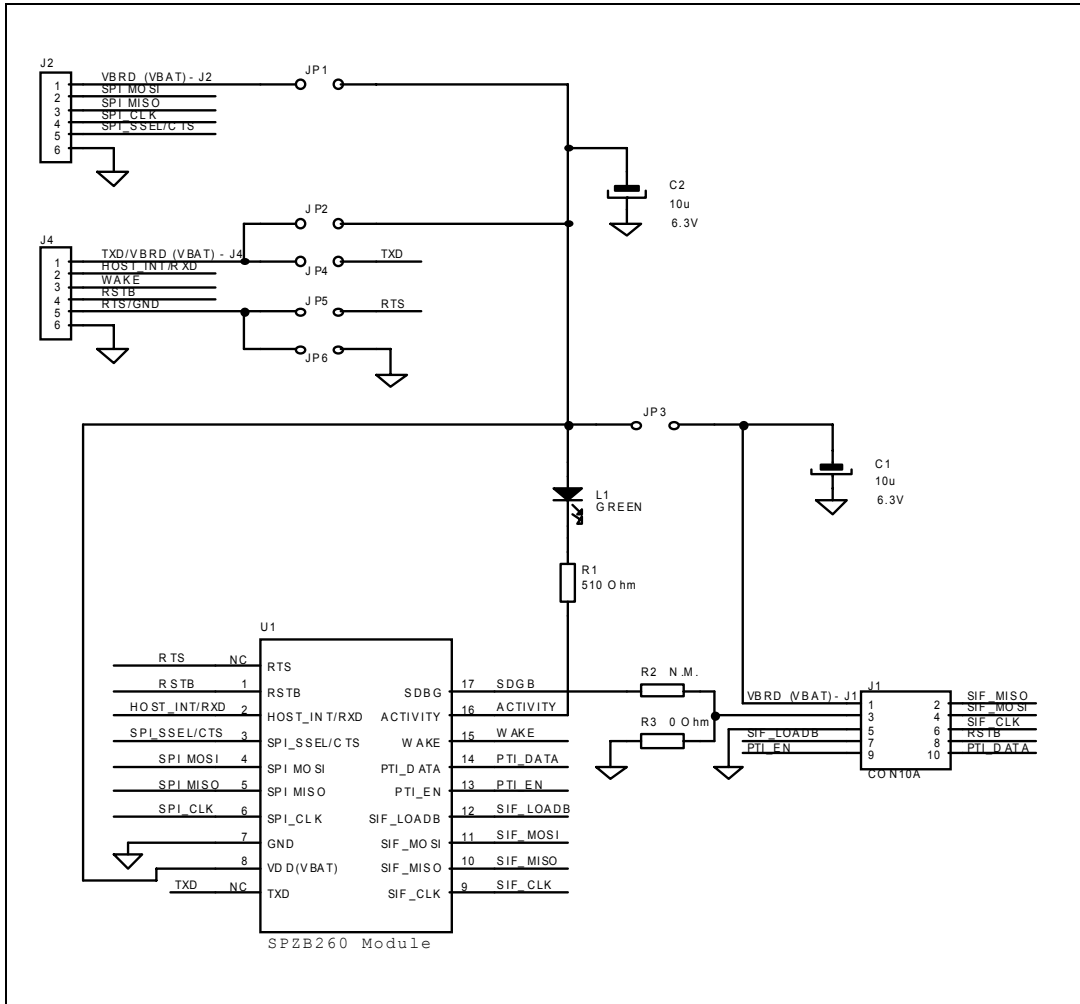
3.4 Adapter layout

Figure 5. Component layout, bottom and top side



4 Electrical drawing

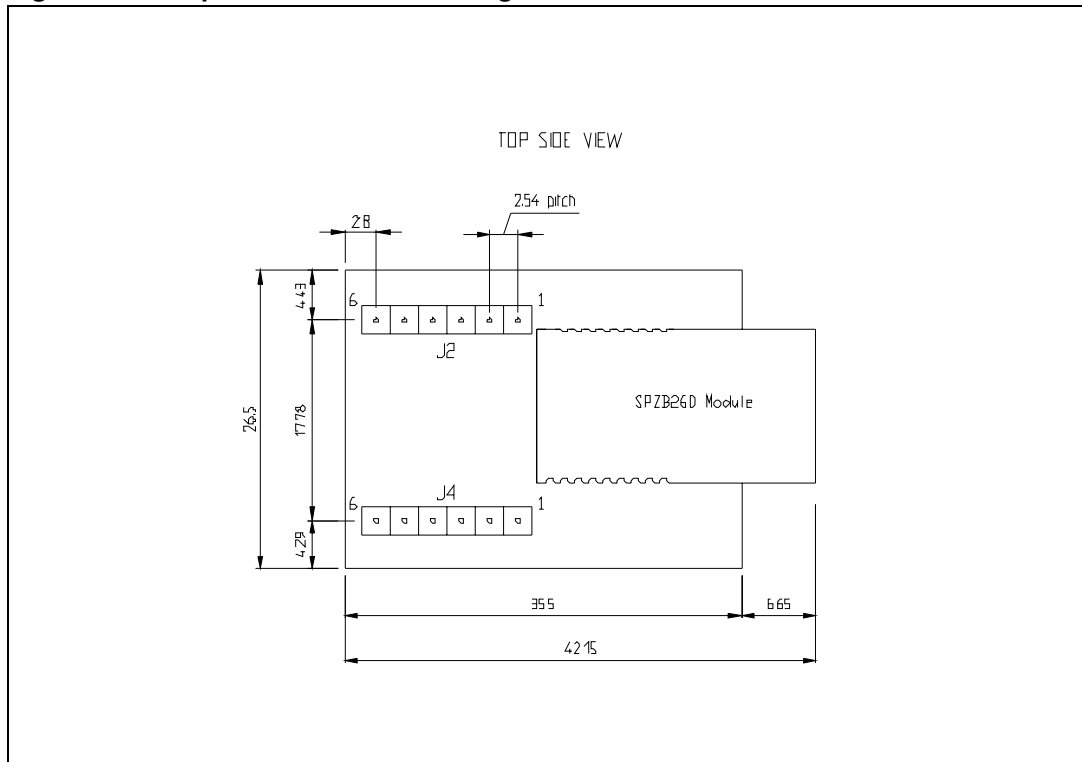
Figure 6. Adapter electrical drawing



5 Mechanical drawing

In order to meet environmental requirements, ST offers these devices in ECOPACK[®] packages. These packages have a lead-free second level interconnect. The category of second Level Interconnect is marked on the package and on the inner box label, in compliance with JEDEC Standard JESD97. The maximum ratings related to soldering conditions are also marked on the inner box label. ECOPACK is an ST trademark. ECOPACK specifications are available at: www.st.com.

Figure 7. Adapter mechanical drawing



6 Revision history

Table 5. Document revision history

Date	Revision	Changes
18-Apr-2008	1	First release

Please Read Carefully:

Information in this document is provided solely in connection with ST products. STMicroelectronics NV and its subsidiaries ("ST") reserve the right to make changes, corrections, modifications or improvements, to this document, and the products and services described herein at any time, without notice.

All ST products are sold pursuant to ST's terms and conditions of sale.

Purchasers are solely responsible for the choice, selection and use of the ST products and services described herein, and ST assumes no liability whatsoever relating to the choice, selection or use of the ST products and services described herein.

No license, express or implied, by estoppel or otherwise, to any intellectual property rights is granted under this document. If any part of this document refers to any third party products or services it shall not be deemed a license grant by ST for the use of such third party products or services, or any intellectual property contained therein or considered as a warranty covering the use in any manner whatsoever of such third party products or services or any intellectual property contained therein.

UNLESS OTHERWISE SET FORTH IN ST'S TERMS AND CONDITIONS OF SALE ST DISCLAIMS ANY EXPRESS OR IMPLIED WARRANTY WITH RESPECT TO THE USE AND/OR SALE OF ST PRODUCTS INCLUDING WITHOUT LIMITATION IMPLIED WARRANTIES OF MERCHANTABILITY, FITNESS FOR A PARTICULAR PURPOSE (AND THEIR EQUIVALENTS UNDER THE LAWS OF ANY JURISDICTION), OR INFRINGEMENT OF ANY PATENT, COPYRIGHT OR OTHER INTELLECTUAL PROPERTY RIGHT.

UNLESS EXPRESSLY APPROVED IN WRITING BY AN AUTHORIZED ST REPRESENTATIVE, ST PRODUCTS ARE NOT RECOMMENDED, AUTHORIZED OR WARRANTED FOR USE IN MILITARY, AIR CRAFT, SPACE, LIFE SAVING, OR LIFE SUSTAINING APPLICATIONS, NOR IN PRODUCTS OR SYSTEMS WHERE FAILURE OR MALFUNCTION MAY RESULT IN PERSONAL INJURY, DEATH, OR SEVERE PROPERTY OR ENVIRONMENTAL DAMAGE. ST PRODUCTS WHICH ARE NOT SPECIFIED AS "AUTOMOTIVE GRADE" MAY ONLY BE USED IN AUTOMOTIVE APPLICATIONS AT USER'S OWN RISK.

Resale of ST products with provisions different from the statements and/or technical features set forth in this document shall immediately void any warranty granted by ST for the ST product or service described herein and shall not create or extend in any manner whatsoever, any liability of ST.

ST and the ST logo are trademarks or registered trademarks of ST in various countries.

Information in this document supersedes and replaces all information previously supplied.

The ST logo is a registered trademark of STMicroelectronics. All other names are the property of their respective owners.

© 2008 STMicroelectronics - All rights reserved

STMicroelectronics group of companies

Australia - Belgium - Brazil - Canada - China - Czech Republic - Finland - France - Germany - Hong Kong - India - Israel - Italy - Japan - Malaysia - Malta - Morocco - Singapore - Spain - Sweden - Switzerland - United Kingdom - United States of America

www.st.com