

### Description

- Single element AM IF filter.
- Center frequency range: 450kHz, 455kHz
- Bandwidth at 3dB: 10±3kHz, 7±1.5kHz,

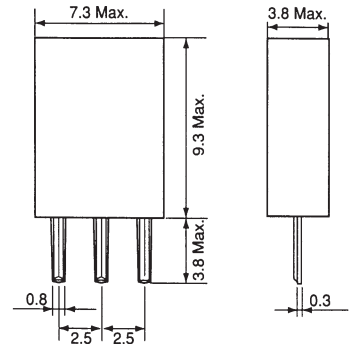
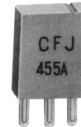
### Features

- No adjustment required in the AM-IF circuit.
- Lead-free terminations

### Applications

- Headphone stereos and pocket radios.
- Radio cassettes with CD, mini-components.

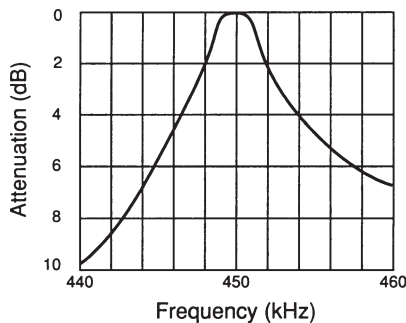
### Dimensions



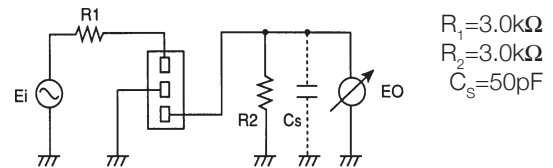
Unit: mm

### Typical Characteristics

#### Frequency response



#### Test Circuit


 $R_1 = 3.0k\Omega$   
 $R_2 = 3.0k\Omega$   
 $C_s = 50pF$ 

## STANDARD FILTERS SELECTION GUIDE

### TYPE CFJW (CERATUNE®)

| TOKO Part Number | Center Frequency (Fo)* (kHz) | Bandwidth at 3dB (kHz) | Selectivity at Fo±9kHz (dB) | Selectivity at Fo±9kHz (dB) | Insertion Loss (dB) | Input/Output Impedance (kΩ) |
|------------------|------------------------------|------------------------|-----------------------------|-----------------------------|---------------------|-----------------------------|
| ACFJW-450A       | 450±1.0                      | 10±3.0                 | 5.0 min.                    | 3.0 min.                    | 5.0 max.            | 3.0/3.0                     |
| ACFJW-450B       | 450±1.0                      | 10±3.0                 | 5.0 min.                    | 3.0 min.                    | 5.0 max.            | 3.0/3.0                     |
| ACFJW-455A       | 455±1.0                      | 10±3.0                 | 5.0 min.                    | 3.0 min.                    | 5.0 max.            | 3.0/3.0                     |
| ACFJW-455B       | 450±1.0                      | 10±3.0                 | 5.0 min.                    | 3.0 min.                    | 5.0 max.            | 3.0/3.0                     |
| BCFJW-450A       | 450±2.0                      | 10±3.0                 | 5.0 min.                    | 3.0 min.                    | 5.0 max.            | 3.0/3.0                     |
| BCFJW-455A       | 455±2.0                      | 10±3.0                 | 5.0 min.                    | 3.0 min.                    | 5.0 max.            | 3.0/3.0                     |
| ACFJW-450BN1     | 450±1.0                      | 7±1.5                  | 6.0 min.                    | 5.0 min.                    | 5.0 max.            | 3.0/3.0                     |
| BCFJW-455BN1     | 455±1.0                      | 7±1.5                  | 6.0 min.                    | 5.0 min.                    | 5.0 max.            | 3.0/3.0                     |



The information furnished by TOKO, Inc. is believed to be accurate and reliable. However, TOKO reserves the right to make changes or improvements in the design, specification or manufacture of its products without further notice. TOKO does not assume any liability arising from the application or use of any product or circuit described herein, nor for any infringements of patents or other rights of third parties which may result from the use of its products. No license is granted by implication or otherwise under any patent or patent rights of TOKO, Inc.