

▼ OPTOSWITCH(2) CUSTOM SPECIFICATION EXAMPLES

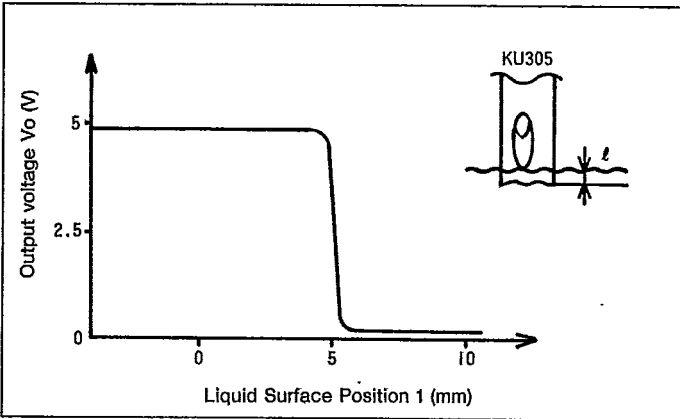
Ta=25°C

Type No.	Supply Voltage Vcc	Operating Temp. Topr	Storage Temp. Tstg	Output Current Io	Output Voltage Vo	Features	fig.
KU305	5V±10%	-10~+80°C	-40~+90°C	20mA MAX. (SINK)	VoH=4VMIN. RL=3KΩ VoL=0.6VMAX.	<ul style="list-style-type: none"> ● Oil-level detection ● Detection distance: 8±1mm from tip 	9
KU306	5V±10%	± 0~+60°C	-25~+80°C	20mA MAX. (SINK)	VoH=4VMIN. RL=4.7KΩ VoL=0.4VMAX.	<ul style="list-style-type: none"> ● Photointerrupter ● Detection distance: 33mm 	10
KU307	5V±5%	+5~+45°C	-40~+75°C	7mA MAX. (SINK)	VoH=2.4VMIN. RL=10KΩ VoL=0.4VMAX.	<ul style="list-style-type: none"> ● Paper detection ● Detection distance: 0 to 17mm (for 0.5 reflectivity) 	11
KU308	5V±5%	± 0~+60°C	-20~+75°C	3mA MAX. (SINK)	VoH=4.5VMIN. RL=10KΩ VoL=0.4VMAX.	<ul style="list-style-type: none"> ● Black paper detection ● Detection distance: 2 to 7mm 	12

● The products listed above are typical examples of custom specifications.

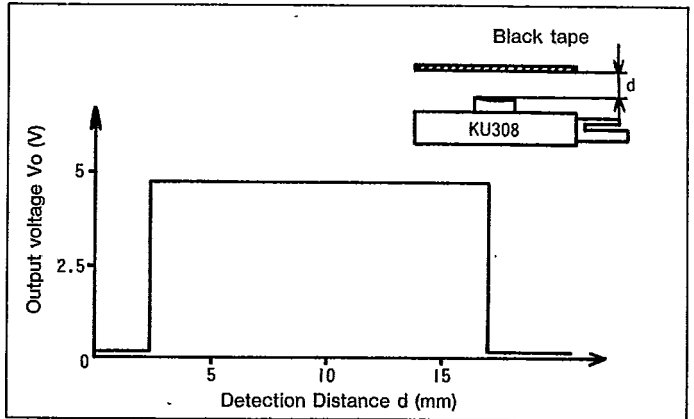
▼ KU305/Liquid Surface Position -Output Voltage Characteristics

(RL=3KΩ, Liquid: silicon oil)

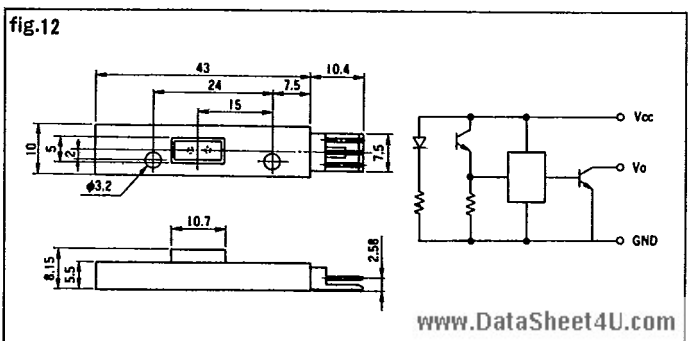
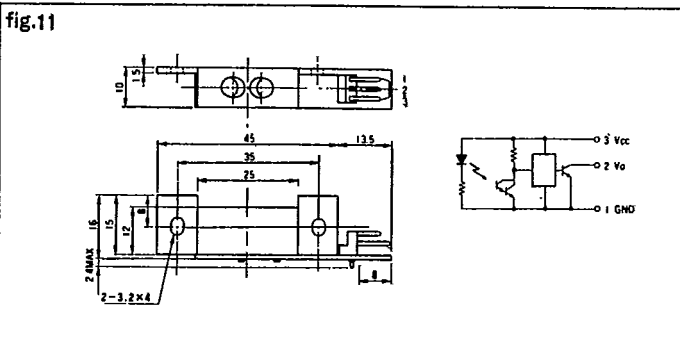
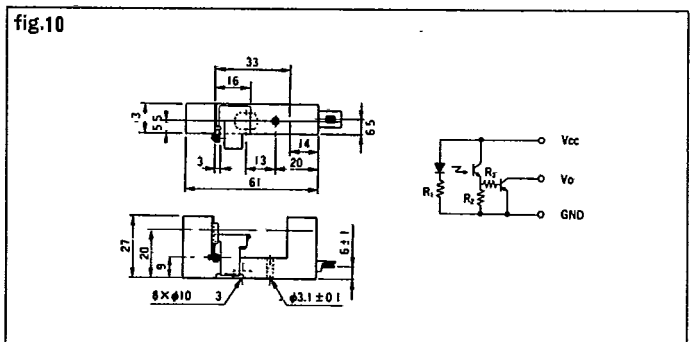
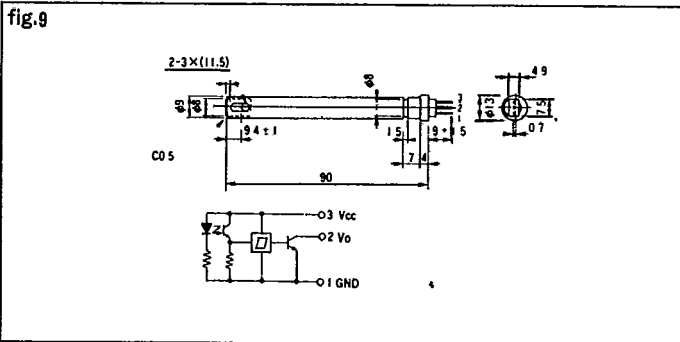


▼ KU308/Detection Distance -Output Voltage Characteristics

(RL=10KΩ, Detection Object: black tape)



▼ PACKAGE DIMENSIONS Unit: mm



www.DataSheet4U.com