

PLEASE CHECK WWW.MOLEX.COM FOR LATEST PART INFORMATION

Part Number: **0579909710**
Status: **Active**
Description: MP-Lock™ Female Terminal, for 20-26 AWG (0.50-0.13mm²), Metal Strip, Tab 4.75 by 0.30mm (.187 by .012"), Pre-Tin Plated

Documents:

[Drawing \(PDF\)](#) [RoHS Certificate of Compliance \(PDF\)](#)
[Product Specification PS-57990-001 \(PDF\)](#)

Agency Certification

UL E92853

General

Product Family Quick Disconnects
 Series [57990](#)
 Crimp Quality Equipment Yes
 Product Name MP-Lock™
 Type Quick Disconnect

Physical

Barrel Type Open
 Gender Female
 Glow-Wire Compliant No
 Insulation None
 Lock to Mating Part Yes
 Material - Metal Brass
 Material - Plating Mating Tin
 Material - Plating Termination Tin
 Orientation Straight
 Packaging Type Reel
 Plating min: Mating (µin) 32.00
 Plating min: Mating (µm) 0.800
 Plating min: Termination (µin) 32.00
 Plating min: Termination (µm) 0.80
 Polarized to Mating Part Yes
 Tab Thickness 0.51mm (.020")
 Tab Width 4.75mm (.187")
 Temperature Range - Operating -40°C to +105°C
 Termination Interface: Style Crimp or Compression
 Wire Insulation Diameter 3.60mm (.142") max.
 Wire Size AWG 20, 22, 24, 26
 Wire Size mm² 0.12 - 0.50

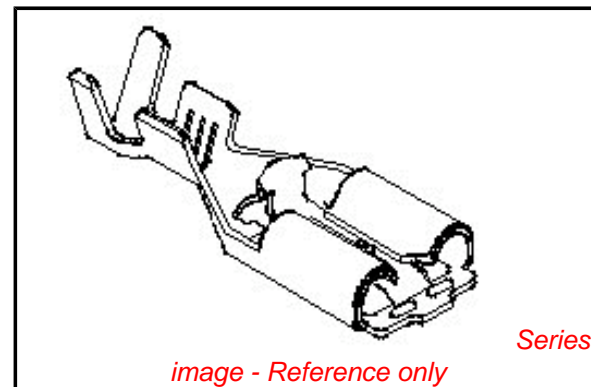
Electrical

Voltage - Maximum 250V

Material Info

Reference - Drawing Numbers

Product Specification PS-57990-001
 Sales Drawing SD-57990-001



EU RoHS

ELV and RoHS Compliant
REACH SVHC Contains SVHC: No
Halogen-Free Status

China RoHS



Need more information on product environmental compliance?

Email productcompliance@molex.com
 For a multiple part number RoHS Certificate of Compliance, [click here](#)

Please visit the [Contact Us](#) section for any non-product compliance questions.

Search Parts in this Series

[57990Series](#)

Use With

4.75mm (.187") Tab

DWG. NO.
SD-57990-001

SIMILAR ITEM

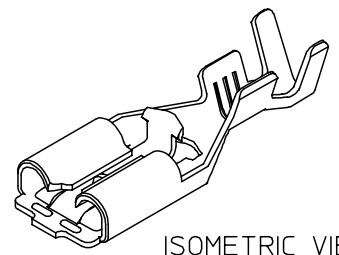
PROJECT NO.

B

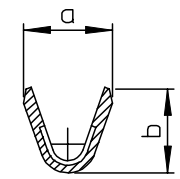
DO NOT SCALE DRAWING
DIMENSION IN METRIC

0.5 MAX.
CUT OFF TAB

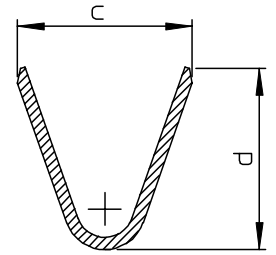
PITCH=18.8



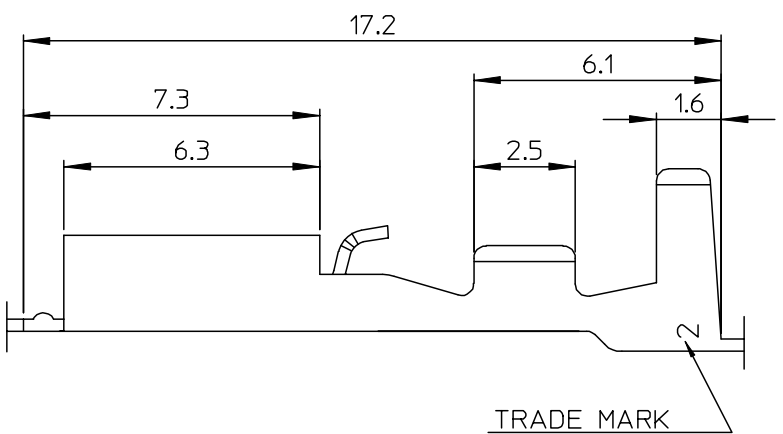
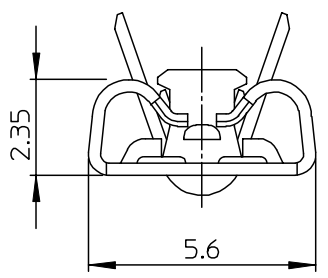
ISOMETRIC VIEW



SECTION A-A



SECTION B-B



- NOTES
1. MATERIAL : BRASS, 0.3mm THICKNESS
 2. FINISH : PRE-TIN PLATED
(1.0MICROMETER MIN. TIN OVER 0.3MICROMETER MIN. COPPER)
 3. MATING TAB : 0.5mm THICKNESS, 4.75mm WIDTH

MATERIAL NO.	ENG NO.	DIMENSION				WIRE RANGE
		a	b	c	d	
579909710	57990-9710	2.3	2.1	4.3	4.5	AWG 26 - 20
579909810	57990-9810	3.5	3.3	5.8	5.2	AWG 20 - 14

NEW RELEASED ECN NO. KR2003-0193 DRWN: C.B.CHIN 03/01/20 CHK: W.Y.YANG APPR: C.W.LEE	QUALITY SYMBOLS MAJOR $\nabla = 0$ CRITICAL $\nabla C = 0$	GENERAL TOLERANCES: (UNLESS SPECIFIED)		SCALE 8:1	DESIGN UNITS <input checked="" type="checkbox"/> mm <input type="checkbox"/> INCH	THIRD ANGLE PROJECTION <input checked="" type="checkbox"/> <input type="checkbox"/>	DIMENSIONS: <input type="checkbox"/> mm <input checked="" type="checkbox"/> INCH <input type="checkbox"/> mm ONLY	SHT	REV
		4 PLACES	$\pm 0.$	$\pm -$	DRAWN BY & DATE C.B.CHIN 02/09/09	TITLE: .187 MP-LOCK REC' TERMINAL FOR SLEEVE			
		3 PLACES	$\pm 0.$	$\pm -$	CHECKED BY & DATE W.Y.YANG 02/09/09	MOLEX INCORPORATED			
		2 PLACES	± 0.20	$\pm -$	APPROVED BY & DATE C.W.LEE 02/09/09	CAD FILENAME S57990AA.MI	MATERIAL NO. SEE TABLE	DRAWING NO. SD-57990-001	SHEET NO. 1 OF 1
1 PLACE	± 0.30	$\pm -$	ANGULAR: $\pm 1^\circ$	DRAFT WHERE APPLICABLE MUST REMAIN WITHIN DIMENSIONS				THIS DRAWING CONTAINS INFORMATION THAT IS PROPRIETARY TO MOLEX INCORPORATED AND SHOULD NOT BE USED WITHOUT WRITTEN PERMISSION.	