

**PLEASE CHECK WWW.MOLEX.COM FOR LATEST PART INFORMATION**

**Part Number:** [0350989702](#)  
**Status:** **Active**  
**Description:** MP-Lock™ Quick Disconnect with Vibration Support, Female, for 20-26 AWG (0.50-0.12mm<sup>2</sup>); Metal Strip, Tab 5.20 by 0.50mm (.205 by .020"), Pre-Tin Plated

**Documents:**

[Drawing \(PDF\)](#) [RoHS Certificate of Compliance \(PDF\)](#)  
[Product Specification PS-35097-001 \(PDF\)](#)

**Agency Certification**

CSA LR95446  
 UL E92853

**General**

Product Family Quick Disconnects  
 Series [35098](#)  
 Crimp Quality Equipment Yes  
 Product Name MP-Lock™  
 Type Quick Disconnect

**Physical**

Barrel Type Open  
 Gender Female  
 Glow-Wire Compliant No  
 Insulation None  
 Lock to Mating Part None  
 Material - Metal Brass  
 Orientation Straight  
 Packaging Type Reel  
 Polarized to Mating Part No  
 Tab Thickness 0.51mm (.020")  
 Tab Width 5.21mm (.205")  
 Temperature Range - Operating -40°C to +120°C  
 Wire Insulation Diameter 2.80mm (.110") max.  
 Wire Size AWG 20, 22, 24, 26  
 Wire Size mm<sup>2</sup> 0.12 - 0.50

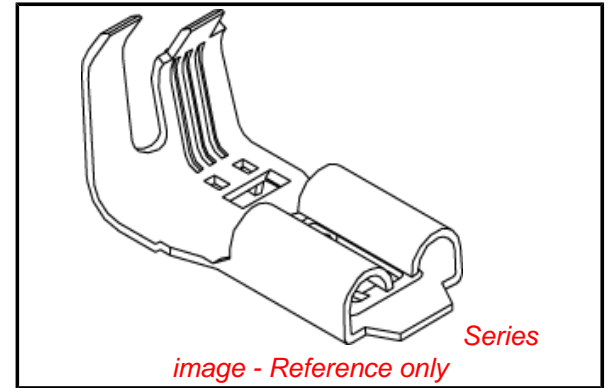
**Electrical**

Voltage - Maximum 250V

**Material Info**

**Reference - Drawing Numbers**

Product Specification PS-35097-001  
 Sales Drawing SD-35098-9\*02



**EU RoHS**

**ELV and RoHS Compliant**  
**REACH SVHC Contains SVHC: No**  
**Halogen-Free Status**

**China RoHS**



**Need more information on product environmental compliance?**

Email [productcompliance@molex.com](mailto:productcompliance@molex.com)  
 For a multiple part number RoHS Certificate of Compliance, [click here](#)

Please visit the [Contact Us](#) section for any non-product compliance questions.

**Search Parts in this Series**

[35098Series](#)

**Use With**

5.21mm (.205") Tab

**Application Tooling | FAQ**

*Tooling specifications and manuals are found by selecting the products below. Crimp Height Specifications are then contained in the Application Tooling Specification document.*

**Japan**

Description	Product #
End-Feed Applicator	<a href="#">0573823100</a>

DWG. NO.

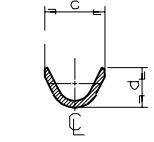
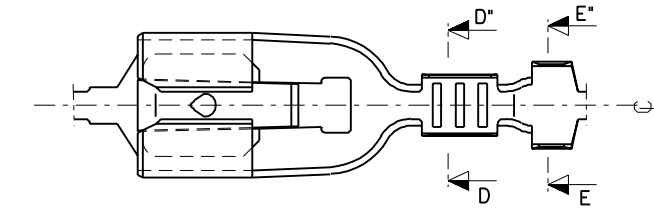
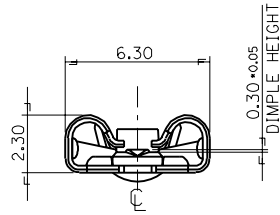
SIMILAR ITEM

PROJECT NO.

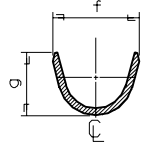
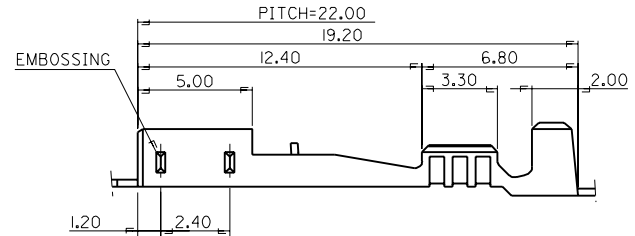
C

B

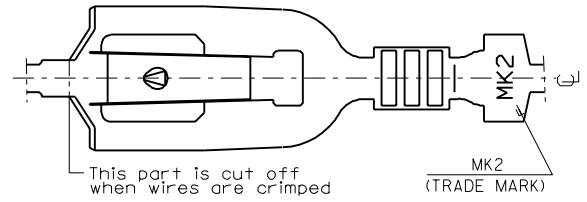
DO NOT SCALE DRAWING  
DIMENSION IN METRIC



SECTION:D-D'



SECTION:E-E'



**NOTES**

- MATERIAL: TIN-PLATED BRASS 0.30mm THICK'
- FINISH: PRE-TIN PLATING
- MATING TAB: 0.5(+) $\times$  5.2(w)

ENG.NO.	DIMENSION				WIRE RANGE
	c	d	f	g	
35098-9702	2.1	1.95	3.3	3.0	AWG #26-#20
35098-9802	2.8	2.9	4.1	4.2	AWG #20-#16

REVISED EC NO. KOR1998-00B3 DRWN:W.Y.YANG 98/07/09 CHK: CHK: APPR:	QUALITY SYMBOLS MAJOR $\blacktriangledown$ = 0 CRITICAL $\blacktriangle$ = 0	GENERAL TOLERANCES: (UNLESS SPECIFIED)		SCALE 5:1	DESIGN UNITS <input checked="" type="checkbox"/> mm <input type="checkbox"/> INCH	THIRD ANGLE PROJECTION	DIMENSIONS: <input type="checkbox"/> mm <input type="checkbox"/> INCH <input checked="" type="checkbox"/> mm ONLY		SHT	REV		
		4 PLACES $\pm 0.$	mm	INCH	mm		INCH	mm	INCH	mm	INCH	mm
		3 PLACES $\pm 0.$	mm	INCH	mm	INCH	mm	INCH	mm	INCH	mm	INCH
		2 PLACES $\pm 0.30$	mm	INCH	mm	INCH	mm	INCH	mm	INCH	mm	INCH
1 PLACE $\pm 0.30$	mm	INCH	mm	INCH	mm	INCH	mm	INCH	mm	INCH		
ANGULAR: $\pm$ °		DRAFT WHERE APPLICABLE MUST REMAIN WITHIN DIMENSIONS		CAD FILENAME S0989702.DGN		MATERIAL NO. SEE CHART		DRAWING NO. SD-35098-9*02		SHEET NO. 10F1		
THIS DRAWING CONTAINS INFORMATION THAT IS PROPRIETARY TO MOLEX INCORPORATED AND SHOULD NOT BE USED WITHOUT WRITTEN PERMISSION.												

TITLE: .205 MP-LOCK RECEPTACLE TERMINAL

**MOLEX INCORPORATED KOREA**