

PLEASE CHECK WWW.MOLEX.COM FOR LATEST PART INFORMATION

Part Number: **0190350005**
Status: **Active**
Description: Avikrimp™ Snap Plug, for 14-16 AWG Wire, Box, 24.08mm (.948") Length

Documents:

[Drawing \(PDF\)](#) [RoHS Certificate of Compliance \(PDF\)](#)

Agency Certification

CSA LR18689
 UL E152602

General

Product Family Quick Disconnects
 Series [19035](#)
 Comments Molded Nylon Insulation
 Crimp Quality Equipment Yes
 Product Name Avikrimp™
 Type Snap Plug

Physical

Barrel Type Closed
 Color - Resin Natural
 Flammability 94V-0
 Gender Male
 Glow-Wire Compliant No
 Insulation Nylon (PA)
 Lock to Mating Part None
 Material - Metal Copper
 Material - Resin Nylon
 Orientation Straight
 Packaging Type Bag
 Tab Thickness N/A
 Tab Width N/A
 Wire Insulation Diameter 4.32mm (.170") max.
 Wire Size AWG 14, 16
 Wire Size mm² 1.30 - 2.00

Electrical

Voltage - Maximum N/A

Material Info

Old Part Number B-579

Reference - Drawing Numbers

Sales Drawing SD-19035-001

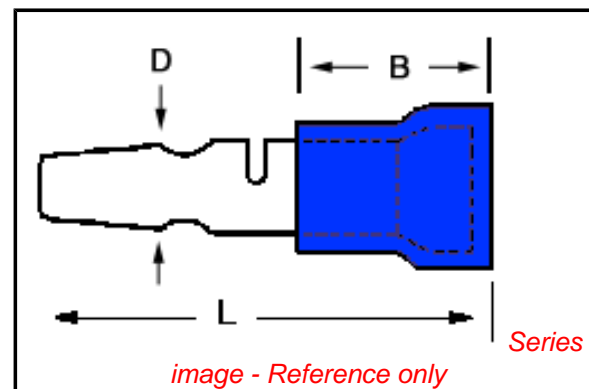


image - Reference only

EU RoHS

ELV and RoHS Compliant
REACH SVHC
 Not Reviewed
Halogen-Free Status
Not Reviewed

China RoHS



Need more information on product environmental compliance?

Email productcompliance@molex.com
 For a multiple part number RoHS Certificate of Compliance, [click here](#)

Please visit the [Contact Us](#) section for any non-product compliance questions.

Search Parts in this Series

[19035Series](#)

Application Tooling | FAQ

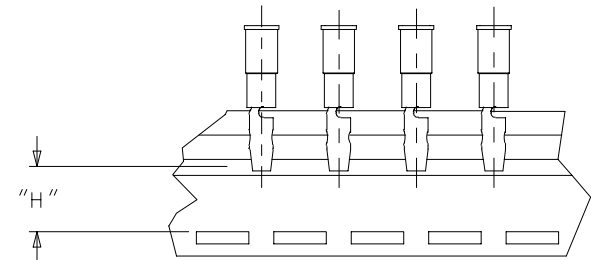
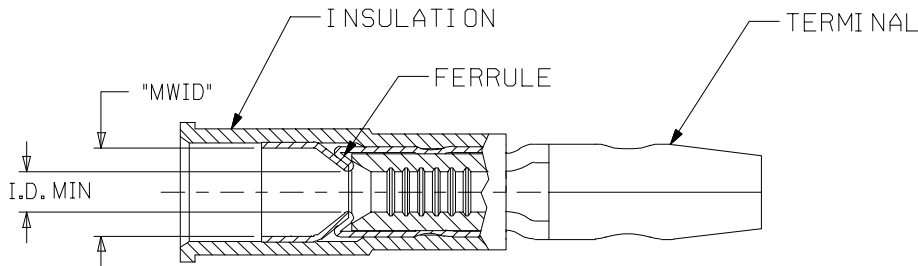
Tooling specifications and manuals are found by selecting the products below. Crimp Height Specifications are then contained in the Application Tooling Specification document.

Global

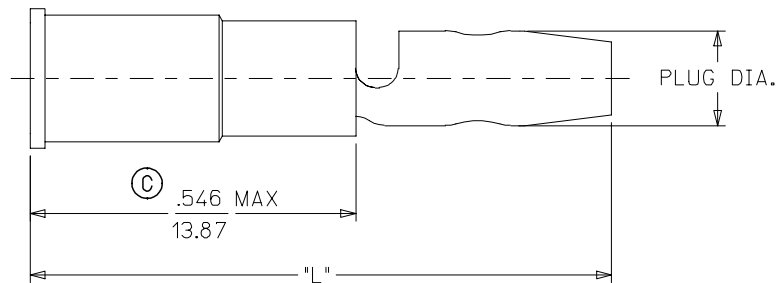
Description	Product #
Hand Crimp Tool	0640010100
Hand Crimp Tool	0640011400
Crimp Head for the AT-200™ Pneumatic Hand Tool	0640050100
Crimp Head for the AT-200™ Pneumatic Hand Tool	0640051400

LOOSE PIECE		TAPE MOUNTED		WIRE RANGE AWG	INSULATION COLOR	I.D. MIN.	PLUG DIA.	MAX "L"	"MWID"	"H" ±.010/0.25
MATERIAL NO.	ENG. NO.	MATERIAL NO.	ENG. NO.							
190350001	A-559	190350002	A-559T	18-22	RED	.056/1.42	.180/4.57	1.046/26.57	.140/3.56	.495/12.57
190350003	A-569	190350004	A-569T	18-22	RED	.056/1.42	.156/3.96	.986/25.04	.140/3.56	.555/14.10
190350005	B-579	190350008	B-579T	14-16	BLUE	.084/2.13	.180/4.57	1.046/26.57	.170/4.32	.495/12.57
190350009	B-589	190350012	B-589T	14-16	BLUE	.084/2.13	.156/3.96	.986/25.04	.170/4.32	.555/14.10

©



TAPE MOUNTING DETAIL



SALES DRAWING

NOTE:

1. TERMINAL: MATERIAL COPPER .032 MAX
FINISH: ELECTRO-TIN.
FERRULE : MATERIAL: BRASS
FINISH: ELECTRO-TIN.
INSULATION: NYLON.
2. MWID = MAXIMUM WIRE INSULATION DIAMETER.
3. ASSEMBLY IS ROHS COMPLIANT.

CORRECTED DIM. & ADDED ROHS
EC NO: ETC2007-0397
DRW: NEHLE 2007/04/27
CHKD: JMACNEIL 2007/05/09
APPR: JMACNEIL 2007/05/10

QUALITY SYMBOLS
▽=0
▽=0

	GENERAL TOLERANCES (UNLESS SPECIFIED)	
	mm	INCH
4 PLACES	± .005	± .0005
3 PLACES	± .013	± .001
2 PLACES	± 0.25	± .010
1 PLACE	± 0.25	± .010
ANGULAR		±1/2°

DRAFT WHERE APPLICABLE
MUST REMAIN WITHIN DIMENSIONS

DIMENSION STYLE		SCALE	DESIGN UNITS	THIRD ANGLE PROJECTION
IN/MM		---	INCH	☉
DRAWN BY	DATE	TITLE		
BRE	2003/02/13	MALE BULLET SNAP PLUG, MOLDED, AVIKRIMP		
CHECKED BY	DATE	MOLEX INCORPORATED		
HEB	2003/02/13	SD-19035-001		
APPROVED BY	DATE	SHEET NO.		
RWD	2003/02/13	1 OF 1		
MATERIAL NO.	DOCUMENT NO.	THIS DRAWING CONTAINS INFORMATION THAT IS PROPRIETARY TO MOLEX INCORPORATED AND SHOULD NOT BE USED WITHOUT WRITTEN PERMISSION		
SEE CHART	SD-19035-001			