

PLEASE CHECK WWW.MOLEX.COM FOR LATEST PART INFORMATION

Part Number: [0874270403](#)

Status: **Active**

Overview: [minifit_jr](#)

Description: 4.20mm (.165") Mini-Fit Jr.™ Header, Right Angle, High Temperature, without Flange, 4 Circuits, Tin (Sn) over Copper (Cu) Plating, Glow Wire Compatible

Documents:

[3D Model](#)

[Drawing \(PDF\)](#)

[Product Specification PS-87427-0001 \(PDF\)](#)

[RoHS Certificate of Compliance \(PDF\)](#)

Agency Certification

CSA LR19980

UL E29179

General

Product Family

PCB Headers

Series

[87427](#)

Application

Wire-to-Board

Comments

Current = 13A max. per circuit when header is mated to a receptacle loaded with [45750](#) Mini-Fit Plus HCS™ Crimp Terminal Crimped to to 16 AWG wire. . See Molex product specification PS-45750-001 for additional current de-rating information.

Overview

[minifit_jr](#)

Product Name

Mini-Fit Jr.™

Physical

Breakaway No

Circuits (Loaded) 4

Color - Resin Beige

Durability (mating cycles max) 30

First Mate / Last Break No

Flammability 94V-0

Glow-Wire Compliant Yes

Lock to Mating Part Yes

Material - Metal Brass

Material - Plating Mating Tin

Material - Plating Termination Tin

Material - Resin Nylon

Number of Rows 2

Orientation Right Angle

PC Tail Length (in) 0.130 In

PC Tail Length (mm) 3.30 mm

PCB Locator No

PCB Retention None

PCB Thickness Recommended (in) 0.062 In

PCB Thickness Recommended (mm) 1.60 mm

Packaging Type Tray

Pitch - Mating Interface (in) 0.165 In

Pitch - Mating Interface (mm) 4.20 mm

Pitch - Term. Interface (in) 0.165 In

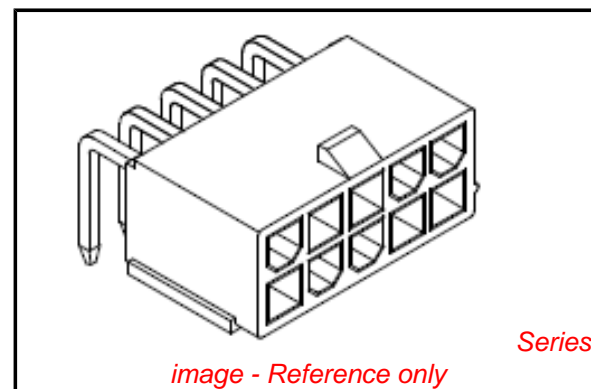
Pitch - Term. Interface (mm) 4.20 mm

Plating min: Mating (µin) 203.2

Plating min: Mating (µm) 5.08

Plating min: Termination (µin) 203.2

Plating min: Termination (µm) 5.08



EU RoHS

ELV and RoHS Compliant

REACH SVHC

Contains SVHC: No

Halogen-Free

Status

Not Halogen-Free

Need more information on product environmental compliance?

Email productcompliance@molex.com

For a multiple part number RoHS Certificate of Compliance, [click here](#)

Please visit the [Contact Us](#) section for any non-product compliance questions.

China RoHS



Search Parts in this Series

[87427Series](#)

Mates With

[5557](#) Mini-Fit Jr.™ Receptacle Housing

Polarized to Mating Part	Yes
Polarized to PCB	No
Shrouded	Fully
Stackable	No
Surface Mount Compatible (SMC)	No
Temperature Range - Operating	-40°C to +105°C
Termination Interface: Style	Through Hole

Electrical

Current - Maximum per Contact	13A
Voltage - Maximum	600V

Solder Process Data

Duration at Max. Process Temperature (seconds)	30
Lead-free Process Capability	SMC & Wave Capable (TH only)
Max. Cycles at Max. Process Temperature	2
Process Temperature max. C	240

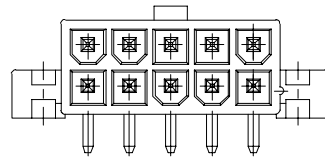
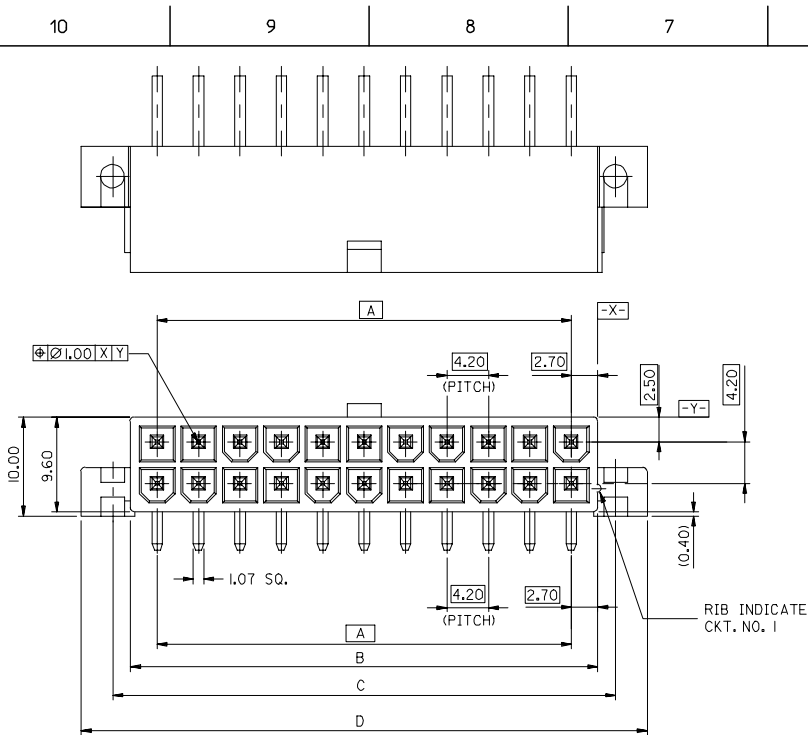
Material Info

Reference - Drawing Numbers

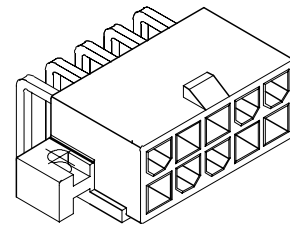
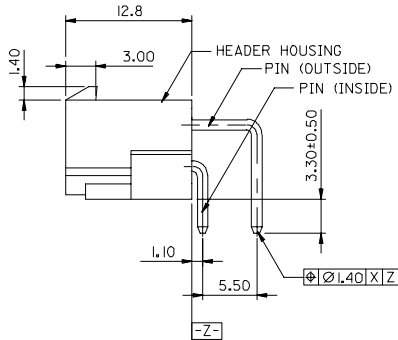
Packaging Specification	PK-87427-001
Product Specification	PS-87427-0001
Sales Drawing	SD-87427-**0*

This document was generated on 05/31/2010

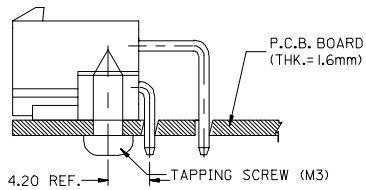
PLEASE CHECK WWW.MOLEX.COM FOR LATEST PART INFORMATION



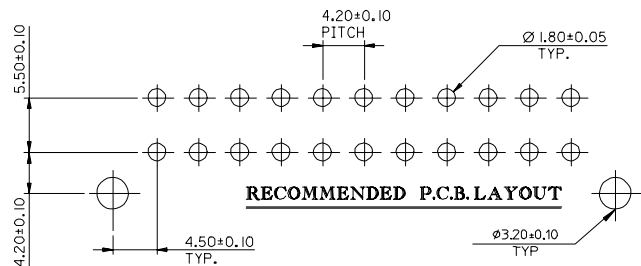
CKT. SIZE 10



ISOMETRIC VIEW



RECOMMENDED INSTALLATION PATTERN



RECOMMENDED P.C.B. LAYOUT

LEGEND

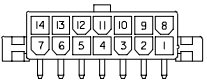
- 87427-****
- CKT. SIZE (SEE SHEET 2)
- PLATING OPTIONS
 - 2 = NOTE 2
 - 3 = NOTE 3
- PACKAGING OPTIONS
 - 1 = TRAY PACKED

NOTES

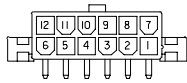
1. MATERIAL - HEADER : NYLON 46, UL94V-0, COLOR BEIGE
PIN : BRASS (1.07 SQUARE)
2. PLATING OF PIN
TIN 2.54um MIN. OVER NICKEL 1.27um MIN.
3. PLATING OF PIN
TIN 4-10um OVER COPPER 2-8um.

EC NO: 12005-0465 DRWN:SSUDHIR 2005/05/13 CHKD:KPRASAD 2005/05/16 APPR:KPRASAD 2005/05/16	QUALITY SYMBOLS ▽=0 ▽C=0	GENERAL TOLERANCES (UNLESS SPECIFIED)		DIMENSION STYLE MM ONLY		SCALE 2:1	DESIGN UNITS METRIC	THIRD ANGLE PROJECTION	
		4 PLACES ± --- ± ---	3 PLACES ± --- ± ---	2 PLACES ± 0.20 ± ---	1 PLACE ± 0.20 ± ---	ANGULAR ± ---°	DRAWN BY STEVEN	DATE 1994/06/24	TITLE 4.2MM W-T-B HIGH TEMP. RIGHT ANGLE HEADER (WITH MOUNTING FLANGES)
REV D	DESCRIPTION	DRAFT WHERE APPLICABLE MUST REMAIN WITHIN DIMENSIONS		SEE CHART		MATERIAL NO.		DOCUMENT NO. SD-87427-***1*	
		SIZE A3		THIS DRAWING CONTAINS INFORMATION THAT IS PROPRIETARY TO MOLEX INCORPORATED AND SHOULD NOT BE USED WITHOUT WRITTEN PERMISSION		MATERIAL NO.		SHEET NO. 1 OF 2	

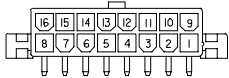
10 9 8 7 6 5 4 3 2 1



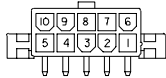
CKT.SIZE 14



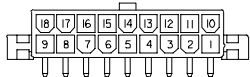
CKT.SIZE 12



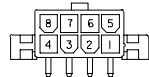
CKT.SIZE 16



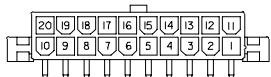
CKT.SIZE 10



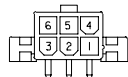
CKT.SIZE 18



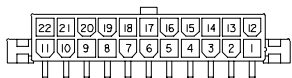
CKT.SIZE 8



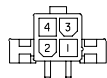
CKT.SIZE 20



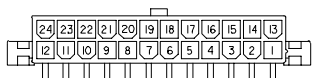
CKT.SIZE 6



CKT.SIZE 22



CKT.SIZE 4



CKT.SIZE 24



CKT.SIZE 2

61.60	55.20	51.60	46.20	87427-241*	24
57.40	51.00	47.40	42.00	87427-221*	22
53.20	46.80	43.20	37.80	87427-201*	20
49.00	42.60	39.00	33.60	87427-181*	18
44.80	38.40	34.80	29.40	87427-161*	16
40.60	34.20	30.60	25.20	87427-141*	14
36.40	30.00	26.40	21.00	87427-121*	12
32.20	25.80	22.20	16.80	87427-101*	10
28.00	21.60	18.00	12.60	87427-081*	8
23.80	17.40	13.80	8.40	87427-061*	6
19.60	13.20	9.60	4.20	87427-041*	4
15.40	9.00	5.40	--	87427-021*	2
D	C	B	A	ENG.NO. TRAY PACKED	CKT. SIZE

EC NO: I2005-0465 DRWN:SSUDHIR 2005/05/13 CHKD:KPRASAD 2005/05/16 APPR:KPRASAD 2005/05/16	QUALITY SYMBOLS ▽=0 ▽=0	GENERAL TOLERANCES (UNLESS SPECIFIED)		DIMENSION STYLE MM ONLY		SCALE 1:1	DESIGN UNITS METRIC	THIRD ANGLE PROJECTION		
		4 PLACES ± --- ± ---	3 PLACES ± --- ± ---	mm INCH	DRAWN BY SAMC	DATE 1996/02/05	TITLE 4.2MM W-T-B HIGH TEMP RIGHT ANGLE HEADER (WITH MOUNTING FLANGES)			
		2 PLACES ± 0.20 ± ---	1 PLACE ± 0.20 ± ---	ANGULAR ± ---°	CHECKED BY	DATE	MOLEX INCORPORATED			
		DRAFT WHERE APPLICABLE MUST REMAIN WITHIN DIMENSIONS			APPROVED BY	DATE	MATERIAL NO.	DOCUMENT NO. SD-87427-***1*	SHEET NO. 2 OF 2	
THIS DRAWING CONTAINS INFORMATION THAT IS PROPRIETARY TO MOLEX INCORPORATED AND SHOULD NOT BE USED WITHOUT WRITTEN PERMISSION										

9 8 7 6 5 4 3 2 1