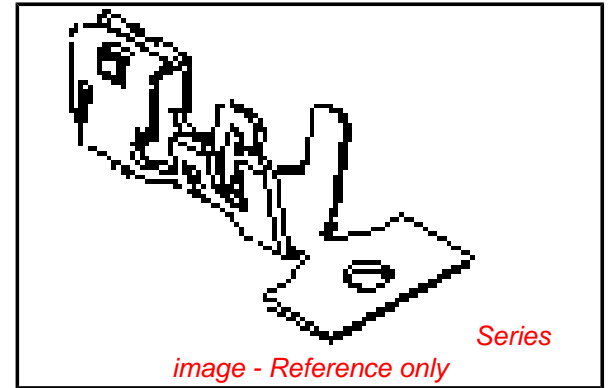


PLEASE CHECK WWW.MOLEX.COM FOR LATEST PART INFORMATION

Part Number: **0503728100**
Status: **Active**
Description: 2.00mm (.079") Pitch Crimp Terminal 50372, Female, 22-26 AWG, Bag

Documents:

Drawing (PDF)	Product Specification PS-51225-003 (PDF)
Product Specification PS-51089-001 (PDF)	Product Specification PS-52968-006 (PDF)
Product Specification PS-51089-005 (PDF)	Product Specification PS-52968-007 (PDF)
Product Specification PS-51090-004 (PDF)	Product Specification PS-53717-002 (PDF)
Product Specification PS-51090-005 (PDF)	Product Specification PS-54111-002 (PDF)
Product Specification PS-51090-007 (PDF)	Product Specification PS-54214-001 (PDF)
Product Specification PS-51090-009 (PDF)	Product Specification PS-54452-007 (PDF)
Product Specification PS-51090-016 (PDF)	Product Specification PS-55533-003 (PDF)
Product Specification PS-51090-017 (PDF)	Product Specification PS-55533-004 (PDF)
Product Specification PS-51160-001 (PDF)	RoHS Certificate of Compliance (PDF)
Product Specification PS-51160-006 (PDF)	



General

Product Family	Crimp Terminals
Series	50372
Crimp Quality Equipment	Yes
Product Name	Mi II™

Physical

Gender	Female
Material - Metal	Phosphor Bronze
Material - Plating Mating	Tin
Material - Plating Termination	Tin
Packaging Type	Bag
Plating min: Mating (µin)	36
Plating min: Mating (µm)	0.90
Plating min: Termination (µin)	36
Plating min: Termination (µm)	0.90
Termination Interface: Style	Crimp or Compression
Wire Insulation Diameter	1.40mm (.055") max.
Wire Size AWG	22, 24, 26
Wire Size mm²	N/A

Material Info

Reference - Drawing Numbers

Product Specification	PS-51089-001, PS-51089-005, PS-51090-004, PS-51090-005, PS-51090-007, PS-51090-009, PS-51090-016, PS-51090-017, PS-51160-001, PS-51160-006, PS-51225-003, PS-52968-006, PS-52968-007, PS-53717-002, PS-54111-002, PS-54214-001, PS-54452-007, PS-55533-003, PS-55533-004, RPS-51089-002, RPS-51089-006, RPS-51090-001, RPS-51090-006, RPS-51090-008, RPS-51090-010, RPS-51090-012, RPS-51090-013, RPS-51090-014, RPS-51090-015, RPS-51090-017, RPS-51090-018, RPS-51090-019, RPS-51090-021, RPS-51090-022, RPS-51090-026, RPS-51160-003, RPS-51160-005, RPS-51339-004, RPS-51339-007, RPS-52968-005, RPS-52968-012, RPS-52968-013, RPS-52969-004, RPS-52969-005, RPS-52969-006,
-----------------------	---

EU RoHS

ELV and RoHS Compliant
REACH SVHC Contains SVHC: No
Halogen-Free Status

China RoHS



Need more information on product environmental compliance?

Email productcompliance@molex.com
 For a multiple part number RoHS Certificate of Compliance, [click here](#)

Please visit the [Contact Us](#) section for any non-product compliance questions.

Search Parts in this Series

50372Series

Use With

51090 , 51089

Application Tooling | FAQ

Tooling specifications and manuals are found by selecting the products below. Crimp Height Specifications are then contained in the Application Tooling Specification document.

Global

Description	Product #
Extraction Tool	0011030043
FineAdjust™ Applicator	0638628000

Japan

Description	Product #
Hand Crimper	0571755000
Extraction Tool	0573216000

Sales Drawing

RPS-53324-001, RPS-54111-004, RPS-54111-005,
RPS-54269-004, RPS-87369-001
SD-50372-8*00

This document was generated on 04/15/2010

PLEASE CHECK WWW.MOLEX.COM FOR LATEST PART INFORMATION

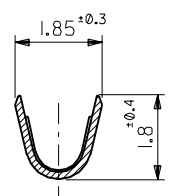
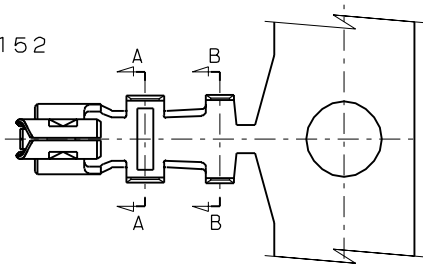
DWG. NO.
SD-50372-8*00

注記
NOTES

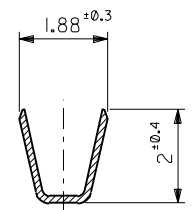
★ 1. 適用ハウジング : 51089-***05, 51090-***00
APPLICABLE HOUSING : 51089-***05, 51090-***00

2. 材質 MATERIAL

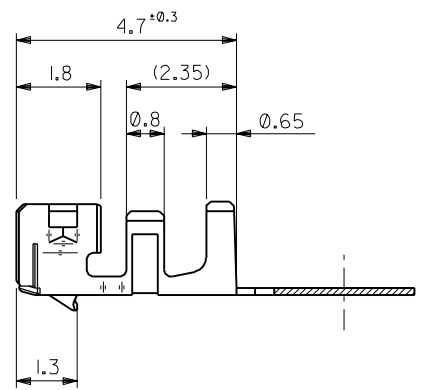
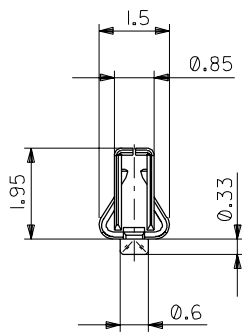
リン青銅, 錫メッキ t=0.152
PHOSPHOR BRONZE, PRE-TINNED, t=0.152



SECT. A-A



SECT. B-B



50372-8100	バラ状 LOOSE
50372-8000	連鎖状 CHAIN
ENG.NO.	端子形状 FORM

材料 MATERIAL 注記参照 SEE NOTES		molex MOLEX-JAPAN CO.,LTD. 日本モレックス株式会社	
仕上げ FINISH 注記参照 SEE NOTES		REVISE ONLY ON CAD SYSTEM	
適用電線範囲 WIRE RANGE AWG #22~#26		TITLE 名称	
被覆外径 INS. RANGE ϕ 1.4MAX.		NEW 2.0 WIRE TO BOARD CONN. CRIMP RECEPTACLE	
DRAWN BY '92/9/3 M.FUJIKURA		CHK'D BY '92/9/4 M.FUJIKURA	
APP'D BY '92/9/4 M.FUJIKURA		尺度 SCALE 10:1	
DWG. NO. SD-50372-8*00		REV 0	

角度 ANGLE	±3°
30以上 OVER	+0.3
10以上 30未満 UNDER	+0.25
10未満 UNDER	+0.2
一般公差 GENERAL TOLERANCES	記号 LTR

新規作成 (J20801) RELEASED	DR. M.F.	日付 DATE '92/9/4
変更内容 REVISION RECORD	DR. CHK.	日付 DATE