

PLEASE CHECK WWW.MOLEX.COM FOR LATEST PART INFORMATION

Part Number: [0357491310](#)
Status: **Active**
Description: Spade Tongue Terminal for 26-30 AWG (0.05~0.13mm²), Stud Size 5-6 M3-3.5, Pre Tin-Lead Plated

Documents:

[Drawing \(PDF\)](#) [RoHS Certificate of Compliance \(PDF\)](#)
[Product Specification PS-35749-001 \(PDF\)](#)

General

Product Family	Ring and Spade Terminals
Series	35749
Crimp Quality Equipment	Yes
Mil-Spec	N/A
Product Name	N/A
Type	Spade

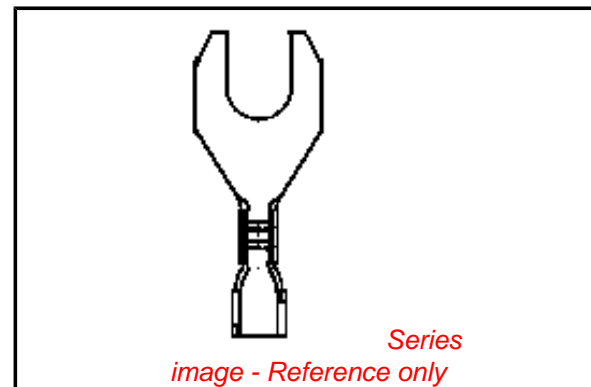
Physical

Barrel Type	Open
Insulation	None
Material - Plating Mating	Tin
Packaging Type	Reel
Stud Size	5-6 (M3-3.5)
Wire Insulation Diameter	1.20mm (.047") max., 1.40mm (.055") max.
Wire Size AWG	26, 28, 30
Wire Size mm ²	0.05 - 0.12

Material Info

Reference - Drawing Numbers

Product Specification	PS-35749-001
Sales Drawing	SD-35749-1310



EU RoHS

ELV and RoHS Compliant
REACH SVHC
Contains SVHC: No
Halogen-Free
Status

China RoHS



Need more information on product environmental compliance?

Email productcompliance@molex.com
 For a multiple part number RoHS Certificate of Compliance, [click here](#)

Please visit the [Contact Us](#) section for any non-product compliance questions.

Search Parts in this Series
[35749Series](#)

10 9 8 7 6 5 4 3 2 1

F

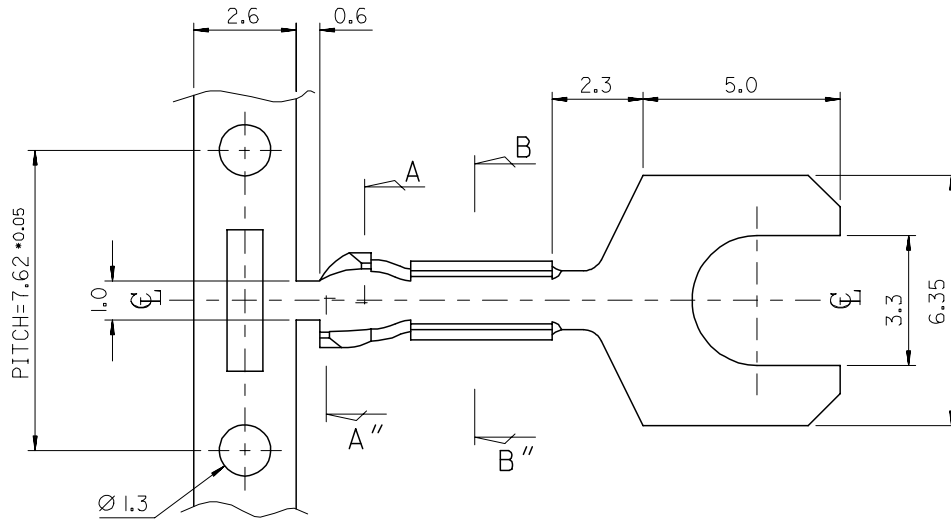
E

D

C

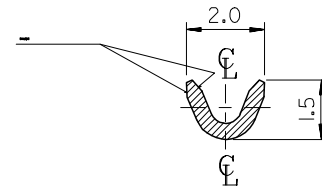
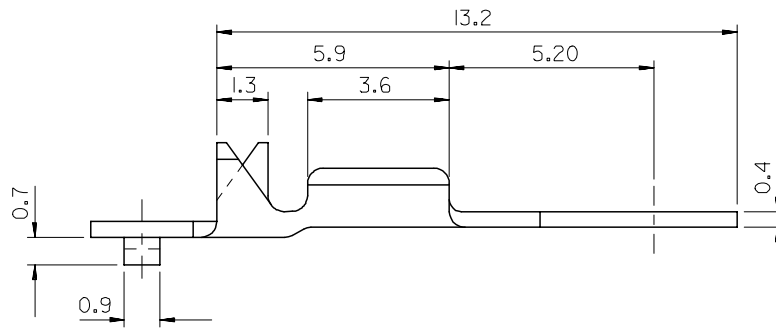
B

A

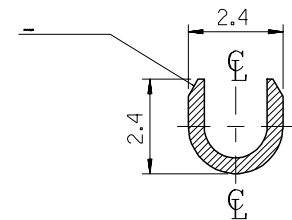


NOTES

1. MATERIAL : BRASS, 0.4mm THICKNESS
2. FINISH : PRE-PLATED TIN
3. RECOMMENDED LENGTH OF WIRE STRIP IS 4.6-5.0mm



SEC' : B-B''



SEC' : A-A''

NEW RELEASED EC NO: KOR2008-0009 DRWN: JHPARK 2007/07/18 CHKD: WYANG 2007/08/20 APPR: YUNSIKKIM 2007/08/20	DESCRIPTION REV	QUALITY SYMBOLS ▽=0 ◻=0	GENERAL TOLERANCES (UNLESS SPECIFIED)		DIMENSION STYLE MM ONLY		SCALE 1:1	DESIGN UNITS METRIC	THIRD ANGLE PROJECTION		
			4 PLACES ± --- ± --- 3 PLACES ± 0.005 ± --- 2 PLACES ± ± --- 1 PLACE ± 0.1 ± ---	mm INCH	DRAWN BY JS.KANG	DATE	TITLE SPADE TERMINAL (D/P)				
			ANGULAR ± 1 °	DRAFT WHERE APPLICABLE MUST REMAIN WITHIN DIMENSIONS	CHECKED BY BK.CHOI	DATE	MOLEX INCORPORATED				
					APPROVED BY	DATE	MATERIAL NO. SD357491310	DOCUMENT NO. SD 35749-1310	SHEET NO. 1 OF 1		

9 8 7 6 5 4 3 2 1