

PLEASE CHECK WWW.MOLEX.COM FOR LATEST PART INFORMATION

Part Number: **0476393000**
Status: **Active**
Overview: slimline serial ata odd connectors
Description: 1.00mm (.039"), 1.27mm (.050") Pitch Removeable Interposer for Dual- Piece Slimline Serial ATA Connector Assembly, Vertical, SMT, Gold (Au) Flash Plating, Leadfree

Documents:

[3D Model](#) [Product Specification PS-47628-001 \(PDF\)](#)
[Drawing \(PDF\)](#) [RoHS Certificate of Compliance \(PDF\)](#)

Agency Certification

CSA LR19980
 UL E29179

General

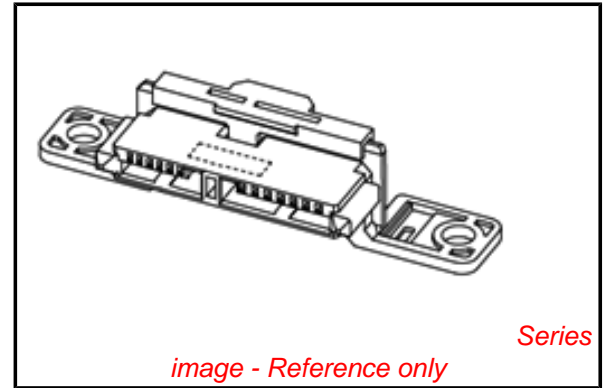
Product Family PCB Receptacles
 Series [47639](#)
 Application Board-to-Board
 Overview [slimline serial ata odd connectors](#)
 Product Name Serial ATA, Slimline Serial ATA

Physical

Circuits (Loaded) 13
 Circuits (maximum) 13
 Color - Resin Black
 Durability (mating cycles max) 500
 Flammability 94V-0
 Glow-Wire Compliant No
 Guide to Mating Part Yes
 Keying to Mating Part Yes
 Lock to Mating Part Yes
 Material - Metal Copper Alloy
 Material - Plating Mating Gold
 Material - Plating Termination Nickel
 Material - Resin High Temperature Thermoplastic
 Number of Rows 1
 Orientation Vertical
 PCB Locator No
 PCB Retention Yes
 Packaging Type Tray
 Pitch - Mating Interface (in) 0.039 In, 0.050 In
 Pitch - Mating Interface (mm) 1.00 mm, 1.27 mm
 Pitch - Term. Interface (in) 0.039 In, 0.050 In
 Pitch - Term. Interface (mm) 1.00 mm, 1.27 mm
 Plating min: Mating (µin) 2
 Plating min: Mating (µm) 0.05
 Polarized to Mating Part Yes
 Polarized to PCB Yes
 Stackable No
 Temperature Range - Operating -35°C to +85°C
 Termination Interface: Style Screw or Lug

Electrical

Current - Maximum per Contact 1.5A
 Grounding to PCB Yes
 Voltage - Maximum 15V DC



EU RoHS

ELV and RoHS Compliant
REACH SVHC Contains SVHC: No
Halogen-Free Status

China RoHS



Not Halogen-Free

Need more information on product environmental compliance?

Email productcompliance@molex.com
 For a multiple part number RoHS Certificate of Compliance, [click here](#)

Please visit the [Contact Us](#) section for any non-product compliance questions.

Search Parts in this Series

[47639Series](#)

Solder Process Data

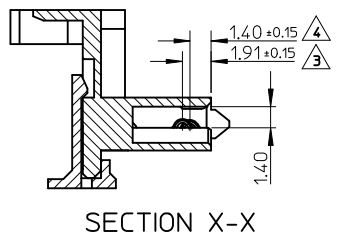
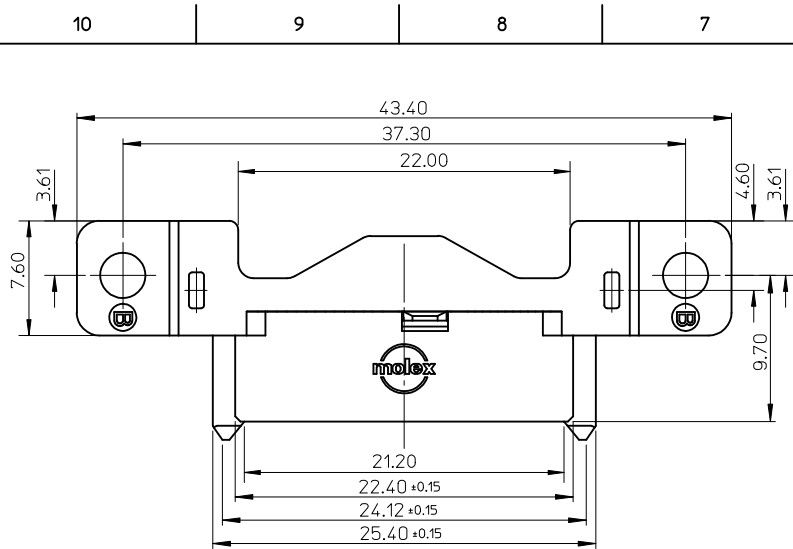
Duration at Max. Process Temperature (seconds)	10
Lead-free Process Capability	Reflow Capable (SMT only)
Max. Cycles at Max. Process Temperature	1
Process Temperature max. C	260

Material Info**Reference - Drawing Numbers**

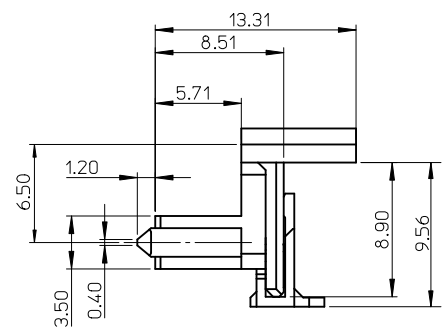
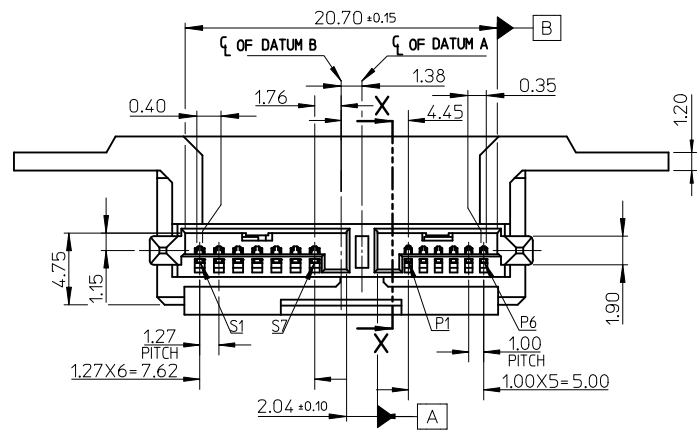
Packaging Specification	PK-47639-003
Product Specification	PS-47628-001
Sales Drawing	SD-47639-300, SD-47639-400

This document was generated on 05/31/2010

PLEASE CHECK WWW.MOLEX.COM FOR LATEST PART INFORMATION



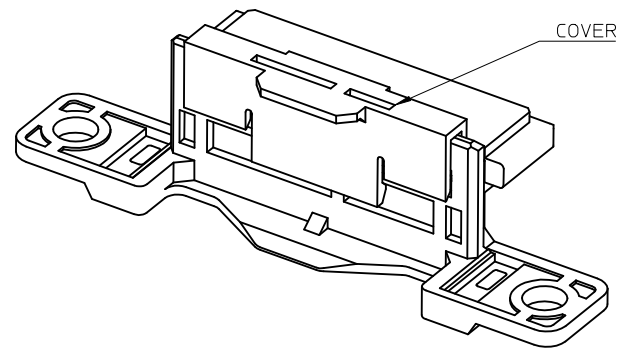
- NOTES :
- MATERIAL:
HOUSING: HIGH TEMPERATURE THERMOPLASTIC, UL94V-0, BLACK.
TERMINAL: COPPER ALLOY
 - PLATING:
TERMINAL:
CONTACT AREA: GOLD PLATING.
UNDERPLATING: NICKEL PLATING.
 - FOR P1 PIN ONLY.
 - FOR PIN P2 THRU P6.
 - PACKAGE: TRAY
 - PRODUCT SPEC: PS-47628-001.
 - SCREW TORQUE: 2.0 kgf.cm REF.
 - THE PRODUCT COMPLIANT TO RoHS DIRECTIVES 2002/95/EC AND ELV 2000/53/EC.



P/N	CONTACT GOLD PLATING SPEC
47639-3200	0.76 MICRONS MIN
47639-3100	0.38 MICRONS MIN
47639-3000	Au FLASH

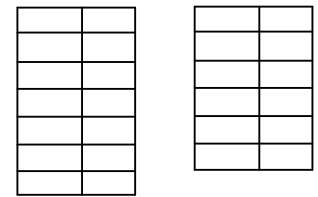
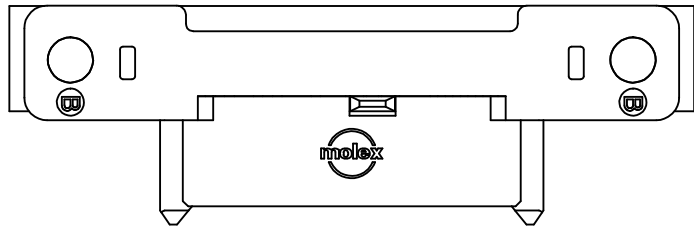
REVISED	EC NO: SH2010-0202	2009/12/22	2009/12/22	2010/01/22
DRW:GLLI	CHKD:XJSNG			
APP:RZHANG				
REV	DESCRIPTION			

QUALITY SYMBOLS	$F_{\sigma} = 0$	GENERAL TOLERANCES (UNLESS SPECIFIED)	DIMENSION STYLE		SCALE	DESIGN UNITS	THIRD ANGLE PROJECTION
	$F_{\sigma} = 0$		mm	INCH			
$F_{\sigma} = 0$		4 PLACES ± --- ± ---	DRAWN BY		DATE	TITLE	INTERPOSER OF 2 PCS SLIMLINE SATA VERTICAL SMT TYPE
		3 PLACES ± --- ± ---	DIXON LI		2008/11/27		
		2 PLACES ± 0.15 ± ---	CHECKED BY		DATE		
		1 PLACE ± 0.25 ± ---	STARY SONG		2008/11/27		
		ANGULAR ± 3 °	APPROVED BY		DATE		MOLEX INCORPORATED
			HARVEY WANG		2008/11/27		
DRAFT WHERE APPLICABLE MUST REMAIN WITHIN DIMENSIONS			MATERIAL NO.		DOCUMENT NO.	SHEET NO.	
			SEE TABLE		SD-47639-300	1 OF 1	



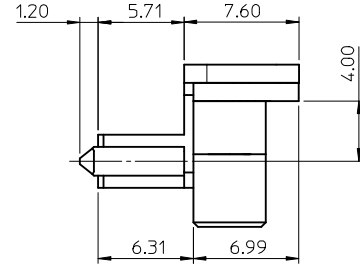
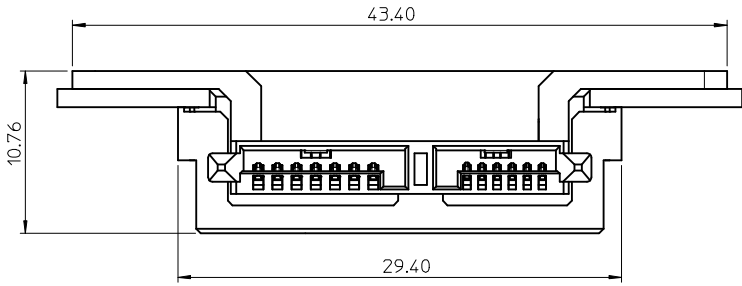
10 9 8 7 6 5 4 3 2 1

F



F

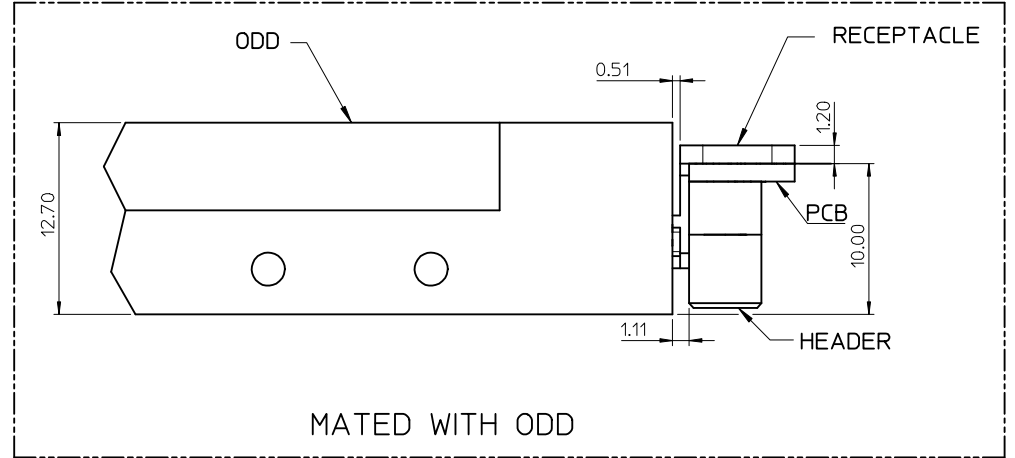
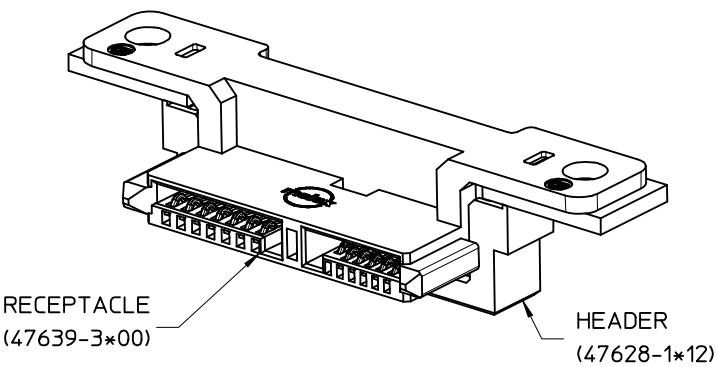
E



E

D

C



D

C

B

B

A

A

RTM EC NO: SH2010-0070 DRWNG:LLI CHKD:XJSONG APPR:RZHANG	2009/08/21 2009/08/21 2009/09/23	QUALITY SYMBOLS ▽=0 ◻=0	GENERAL TOLERANCES (UNLESS SPECIFIED)		DIMENSION STYLE MM ONLY		SCALE 3:1	DESIGN UNITS METRIC	THIRD ANGLE PROJECTION			
	REV B		DESCRIPTION 4 PLACES 3 PLACES 2 PLACES 1 PLACE	mm INCH	DRAWN BY DIXON LI	DATE 2008/11/27	CHECKED BY STARY SONG	DATE 2008/11/27	TITLE 2 PIECES SLIMLINE SATA BOTTOM MOUNT TYPE (ASSEMBLY)			
			ANGULAR ± 3 °	APPROVED BY HARVEY WANG	DATE 2008/11/27	MATERIAL NO. SEE REMARK		MOLEX INCORPORATED				
			DRAFT WHERE APPLICABLE MUST REMAIN WITHIN DIMENSIONS	SIZE A3	THIS DRAWING CONTAINS INFORMATION THAT IS PROPRIETARY TO MOLEX INCORPORATED AND SHOULD NOT BE USED WITHOUT WRITTEN PERMISSION				DOCUMENT NO. SD-47639-400	SHEET NO. 2 OF 2		

9 8 7 6 5 4 3 2 1