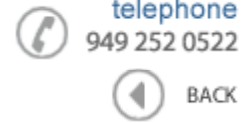




Data Sheet



Product Category: IF SAW Filter

Part Number	Package	Application	Last Modified
807-SL300.0M-20	7.0 x 5.0mm SMD	Base Station & Repeater	Apr 18, 2007

TYPE :
300.00 MHz Filter
Low Loss



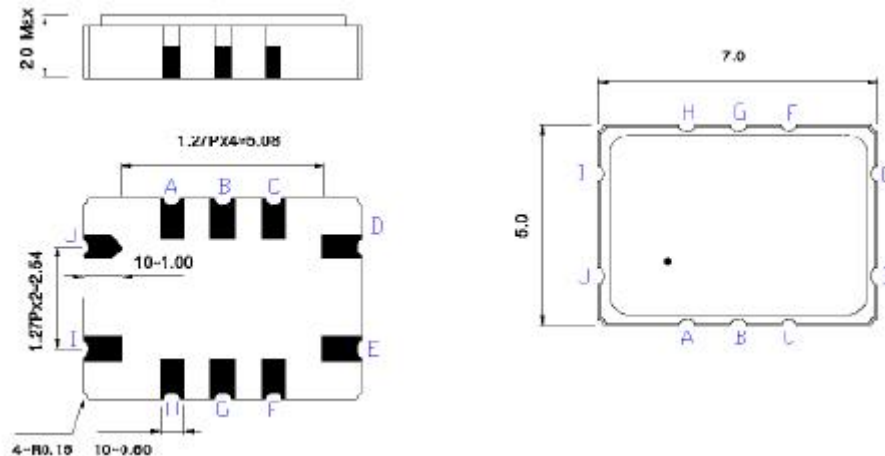
PART NUMBER :
807-SL300.0M-20

OPERATING CONDITIONS / ELECTRICAL CHARACTERISTICS

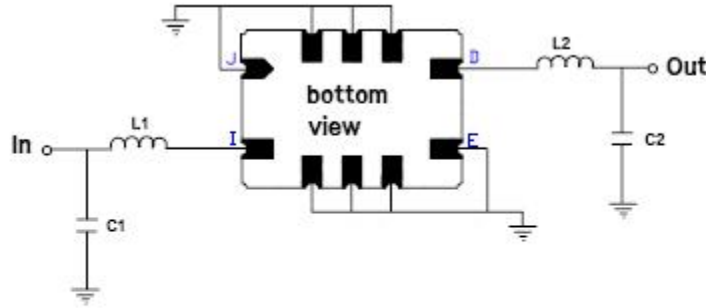
PARAMETERS	Minimum	Typical	Maximum	Units
Center Frequency	-	300.0	-	MHz
Insertion Loss	-	10.30	15	dB
Source Impedance (single ended)*	-	50	-	ohm
Load Impedance (single ended)*	-	50	-	ohm
Bandwidth -1.0 dB	20.0	21.95	-	MHz
Bandwidth -3.0 dB	21.0	23.55	-	MHz
Bandwidth -40.0 dB	-	-	31.0	MHz
Amplitude Ripple (Fo +/- 2.5MHz)	-	0.4	0.7	dBp-p
Amplitude Ripple	-	0.7	1.5	dBp-p
Group Delay Variation	-	65	120	nsec
Group Delay Variation	-	50	100	nsec
Absolute Delay at Fo	-	0.510	1.0	µsec
Relative Attenuation	-	-	-	-
Lower Sidelobe	40	-	-	dB
Upper Sidelobe	40	-	-	dB
Ambient Temperature	-	25	-	°C
Temperature Coefficient	-	-94	-	ppm/°C

*Custom parameters available. Contact Oscilent Sales for discussion.

PACKAGE OUTLINE (mm)

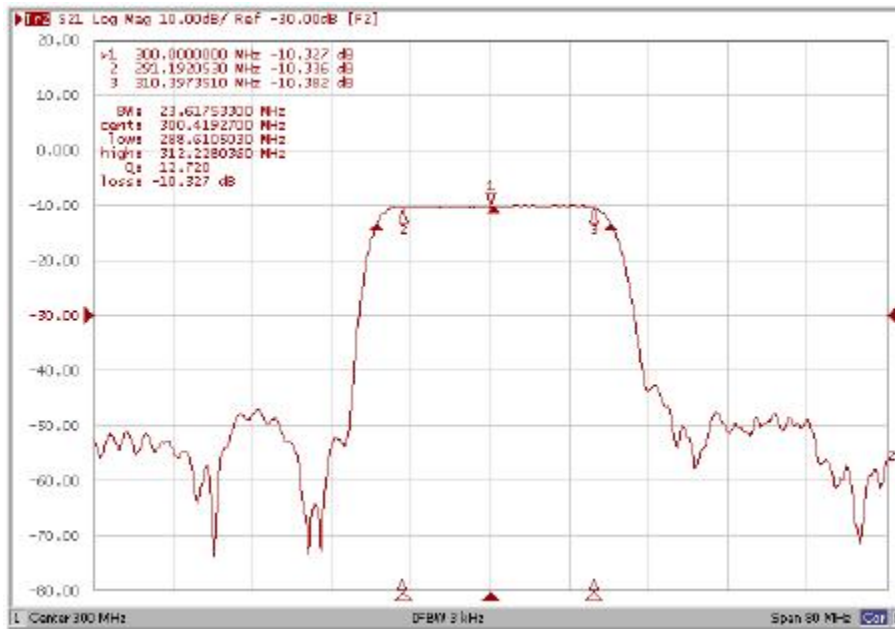


TEST FIXTURE



Test Fixture & Values	
Input	L1=22nH , C1=13pF
Output	L2=25nH , C2=18pF

FREQUENCY RESPONSE



Oscilent Corporation - CALL **949.252.0522**

Part No.: 807-SL300.0M-20

18195 East McDermott Street , Building D , Irvine , CA 92614 , USA
 Fax: 949.252.0599 , E-Mail: Sales@Oscilent.com