

PLEASE CHECK WWW.MOLEX.COM FOR LATEST PART INFORMATION

Part Number: [0877550800](#)
Status: **Active**
Description: 2.00mm (.079") Pitch PCB Header, Through Hole, Single Row Dual Body, Vertical, 8 Circuits, Tin (Sn) Overall, 19.00mm (.748") Stacking Height, Tray Packaging, Lead-free

Documents:

[3D Model](#) [Product Specification PS-87761-100 \(PDF\)](#)
[Drawing \(PDF\)](#) [RoHS Certificate of Compliance \(PDF\)](#)

General

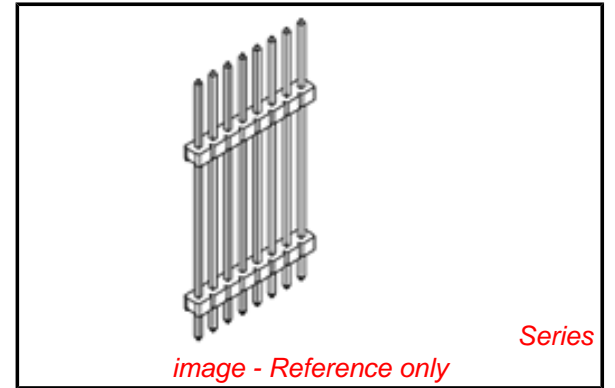
Product Family PCB Headers
 Series [87755](#)
 Application Board-to-Board
 Product Name Dual Body

Physical

Breakaway Yes
 Circuits (Loaded) 8
 Circuits (maximum) 8
 Color - Resin Black
 First Mate / Last Break No
 Glow-Wire Compliant No
 Guide to Mating Part No
 Keying to Mating Part None
 Lock to Mating Part None
 Mated Height (in) 0.748 In
 Mated Height (mm) 19.00 mm
 Material - Metal Copper Alloy
 Material - Plating Mating Tin
 Material - Resin Nylon
 Number of Rows 1
 Orientation Vertical
 PC Tail Length (in) 0.142 In
 PC Tail Length (mm) 3.60 mm
 PCB Locator No
 PCB Retention None
 PCB Thickness Recommended (in) 0.062 In
 PCB Thickness Recommended (mm) 1.60 mm
 Packaging Type Tray
 Pitch - Mating Interface (in) 0.079 In
 Pitch - Mating Interface (mm) 2.00 mm
 Pitch - Term. Interface (in) 0.079 In
 Pitch - Term. Interface (mm) 2.00 mm
 Plating min: Mating (µin) 100
 Plating min: Mating (µm) 2.54
 Polarized to Mating Part No
 Polarized to PCB No
 Shrouded No
 Stackable Yes
 Surface Mount Compatible (SMC) Yes
 Temperature Range - Operating -55°C to +105°C
 Termination Interface: Style Through Hole

Electrical

Current - Maximum per Contact 2A
 Voltage - Maximum 125V



EU RoHS

ELV and RoHS Compliant
REACH SVHC
 Not Reviewed
Halogen-Free Status
Not Reviewed

China RoHS



Need more information on product environmental compliance?

Email productcompliance@molex.com
 For a multiple part number RoHS Certificate of Compliance, [click here](#)

Please visit the [Contact Us](#) section for any non-product compliance questions.

Search Parts in this Series

[87755Series](#)

Solder Process Data

Duration at Max. Process Temperature (seconds)	5
Lead-free Process Capability	Wave Capable (TH only)
Max. Cycles at Max. Process Temperature	1
Process Temperature max. C	250

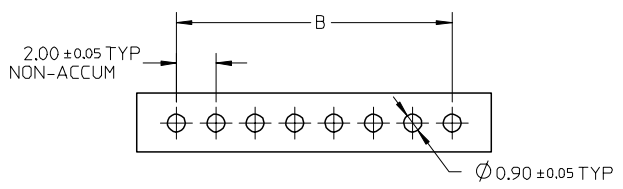
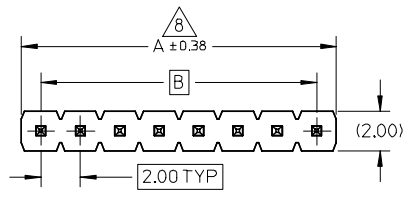
Material Info**Reference - Drawing Numbers**

Product Specification	PS-87761-100
Sales Drawing	SD-87755-030

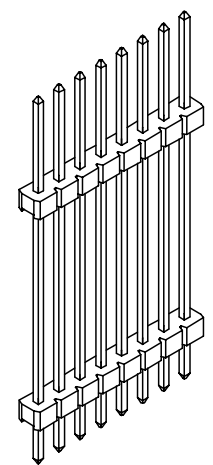
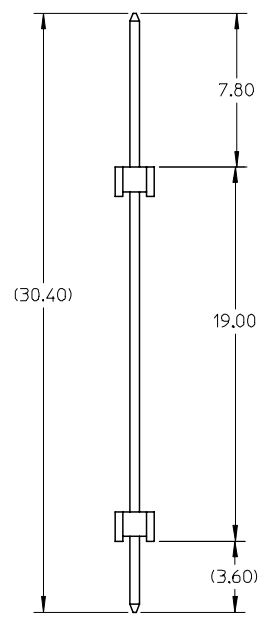
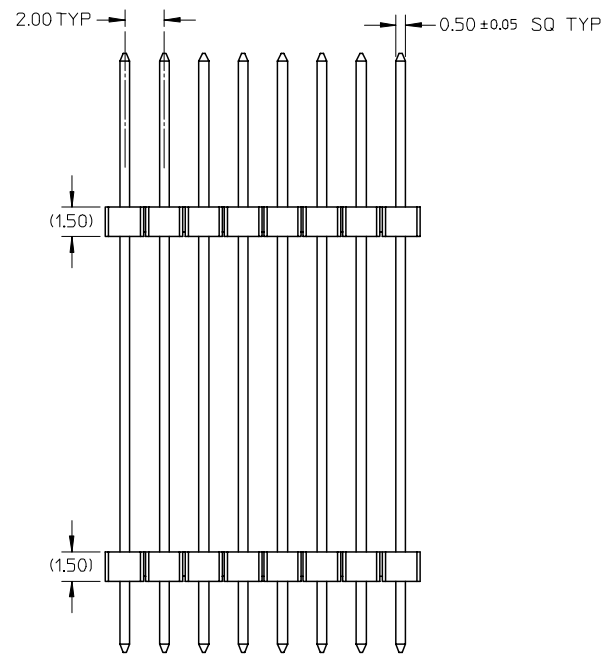
This document was generated on 04/20/2010

PLEASE CHECK WWW.MOLEX.COM FOR LATEST PART INFORMATION

10 9 8 7 6 5 4 3 2 1



RECOMMENDED PCB HOLE LAYOUT



PART NO. FOR TRAY PACKAGING	CKT SIZE	PEG OPTION	VOID POSITION	PLATING TYPE	DIMENSION	
					A	B
87755-0800	8	NO	----	154	16.00	14.00

- NOTES
- MATERIAL:
HSG: NYLON, GLASS-FILLED, UL94V-0
COLOR: BLACK
PIN: COPPER ALLOY, 0.50mm SQ.
 - PLATING TYPE:
(154) 2.540µm/100µm MIN TIN OVERALL OVER
1.270µm/50µm NICKEL OVERALL
 - PARTS TO BE PACKED IN TRAY
 - PCB THICKNESS 1.60+/-0.10mm
 - PIN PUSHOUT FORCE 0.85kgf MIN IN EITHER DIRECTION
 - PRODUCT SPECIFICATION: PS-87761-100
 - WAFER TO BE FLAT WITHIN 0.003 mm/mm
 - IRREGULAR CIRCUIT CUTOFF WITHIN BREAKAWAY SECTION IS PERMISSIBLE. CUTTING OR CHIPPING OF THE MAIN BODY IS NOT ACCEPTABLE

EC NO: S2007-0035 DRWN:SKLIM01 2006/07/26 CHKD:PATEY 2006/07/26 APPR:PATEY 2006/07/28	QUALITY SYMBOLS ▽=0 ▽C=0	GENERAL TOLERANCES (UNLESS SPECIFIED)		DIMENSION STYLE MM ONLY		SCALE NTS	DESIGN UNITS METRIC	THIRD ANGLE PROJECTION		
			mm	INCH	DRAWN BY SKLIM01	DATE 2005/11/24	CUSTOM HEADER 2MM PITCH SINGLE ROW HDR DUAL WAFER, VERTICAL T/H MOLEX INCORPORATED			
		4 PLACES	± ---	± ---	CHECKED BY BOKOK	DATE 2005/11/25				
		3 PLACES	± ---	± ---	APPROVED BY PTLIM	DATE 2005/11/25	DOCUMENT NO. SD-87755-030		SHEET NO. 1 OF 1	
2 PLACES	± 0.20	± ---	DRAFT WHERE APPLICABLE MUST REMAIN WITHIN DIMENSIONS		SEE TABLE					
1 PLACE	± ---	± ---								
		ANGULAR ± 3 °								

9 8 7 6 5 4 3 2 1