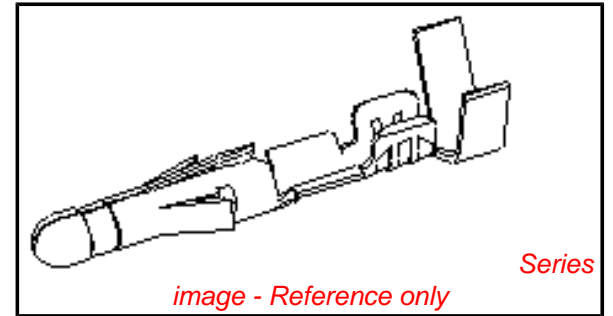


PLEASE CHECK WWW.MOLEX.COM FOR LATEST PART INFORMATION

Part Number: **0002096100**
Status: **Active**
Overview: standard_093
Description: 2.36mm (.093") Diameter, Standard .093" Pin and Socket Crimp Terminal, Series 1190, Male, with Gold (Au) Plated Brass Contact, 14-20 AWG, Reel

Documents:

[Drawing \(PDF\)](#) [RoHS Certificate of Compliance \(PDF\)](#)
[Product Specification PS-02-09 \(PDF\)](#)



General

Product Family	Crimp Terminals
Series	<u>1190</u>
Crimp Quality Equipment	Yes
Overview	<u>standard_093</u>
Product Name	Standard .093"
Physical	
Gender	Male
Material - Metal	Brass
Material - Plating Mating	Gold
Material - Plating Termination	Gold
Packaging Type	Reel
Plating min: Mating (µin)	15
Plating min: Mating (µm)	0.375
Plating min: Termination (µin)	10
Plating min: Termination (µm)	0.25
Termination Interface: Style	Crimp or Compression
Wire Insulation Diameter	1.65-4.06mm (.065-.160")
Wire Size AWG	14, 16, 18, 20
Wire Size mm ²	N/A

Material Info

Old Part Number 1190550

Reference - Drawing Numbers

Packaging Specification	PK-1190-001
Product Specification	PS-02-09
Sales Drawing	SD-1190*

EU RoHS
ELV and RoHS
Compliant
REACH SVHC
 Not Reviewed
Halogen-Free
Status
Not Reviewed

China RoHS



Need more information on product environmental compliance?

Email productcompliance@molex.com
 For a multiple part number RoHS Certificate of Compliance, [click here](#)

Please visit the [Contact Us](#) section for any non-product compliance questions.

Search Parts in this Series

1190Series

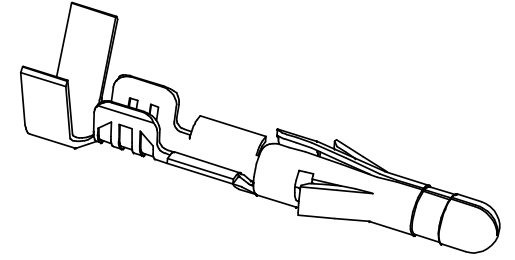
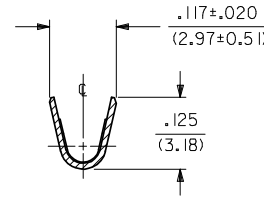
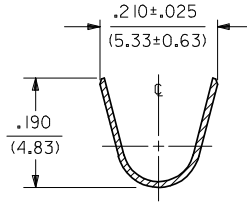
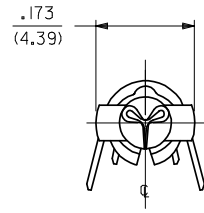
Application Tooling | FAQ

Tooling specifications and manuals are found by selecting the products below. Crimp Height Specifications are then contained in the Application Tooling Specification document.

Global

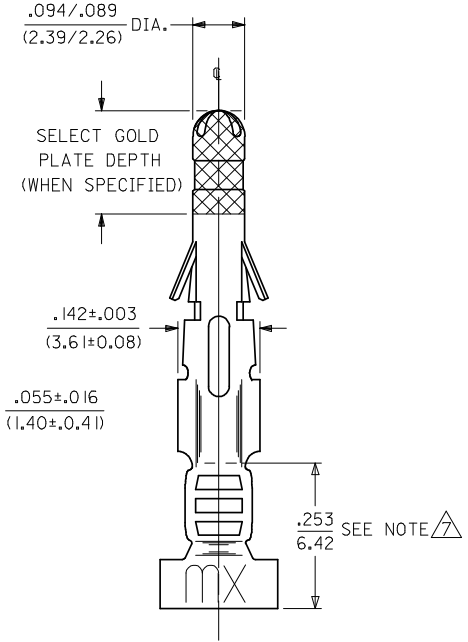
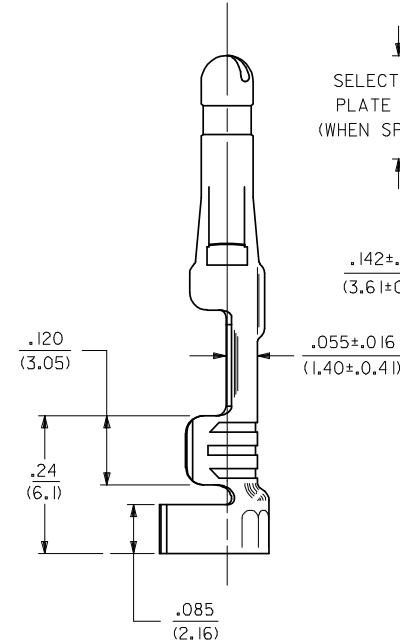
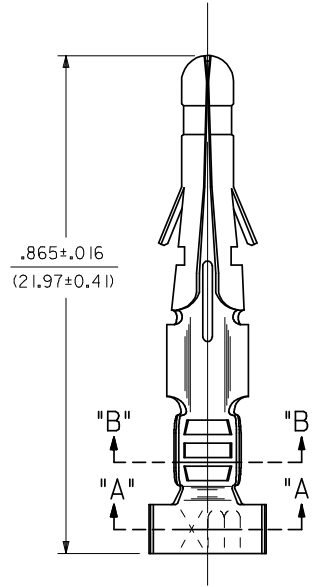
Description	Product #
Mini-Mac™ Applicator	<u>0638927100</u>
Mini-Mac™ Applicator	<u>0638927300</u>
Insertion Tool	<u>0011020003</u>
Extraction Tool	<u>0011030006</u>
Terminator Die	<u>0011402001</u>
Hand Crimper - DISTRIBUTION ONLY	<u>0638111000</u>

PART NO.	ENG. NO.
02-09-2103	1190-(P901)L
02-09-2101	1190-(P901)
02-09-6110	1190-(591)L
02-09-6101	1190-(591)
02-09-6106	1190-(550)L
02-09-6100	1190-(550)



SECT. "A-A"

SECT. "B-B"

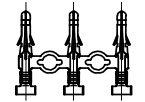


NOTES:

- 1) MATERIAL:
CARTRIDGE BRASS
- 2) FINISH CODES:
901 HOT TIN DIP .000020/(0.00051) MIN.
591 SELECT GOLD PLATE .000050/(0.00127) MIN. IN CONTACT AREA,
OVER .000050/(0.00127) MIN. NICKEL OVERALL
WITH .000010/(0.00025) MAX. GOLD FLASH OVERALL.
550 SELECT GOLD PLATE .000015/(0.00038) MIN. IN CONTACT AREA,
OVER .000030/(0.00076) MIN. NICKEL OVERALL
WITH .000010/(0.00025) MAX. GOLD FLASH OVERALL.
- 3) PRODUCT SPECIFICATION: PS-43660-9999
- 4) PACKAGING SPECIFICATION: PK-1190-001
- 5) INSERTION FORCE: 3.5 LBS. MAX. WHEN TERMINAL IS INSERTED INTO .093 SERIES HOUSING.
- 6) RETENTION: 20 LBS. MIN. FROM HOUSING.
- 7) DIMENSION FROM THE END OF THE TERMINAL TO THE END OF THE BRUSH ON THE WIRE CRIMPED INTO THE TERMINAL.
- 8) TERMINAL FOR USE WITH .093/(2.36) SERIES HOUSINGS AND WILL ACCEPT 14 THRU 20 AWG WIRE.

LEGEND

1190-(****)*
 P=PREPLATE FORM
 BLANK=POSTPLATE BLANK=CHAIN
 L=LOOSE
 FINISH CODE



CHAIN FORM
FULL SCALE

ADD PK SPEC EC NO: UCP2009-0180 DRWNG: GAVRILL 2008/08/15 CHKD: AELHAG 2008/08/22 APPR: FSM LTH 2008/08/22 BS1	QUALITY SYMBOLS	GENERAL TOLERANCES (UNLESS SPECIFIED)	DIMENSION STYLE IN/MM	SCALE	DESIGN UNITS	THIRD ANGLE PROJECTION													
	$\nabla=0$ $\nabla=0$			<table border="1"> <tr> <th></th> <th>mm</th> <th>INCH</th> </tr> <tr> <td>4 PLACES ± ---</td> <td>± ---</td> <td>± ---</td> </tr> <tr> <td>3 PLACES ± ---</td> <td>± .010</td> <td>± .010</td> </tr> <tr> <td>2 PLACES ± .25</td> <td>± .014</td> <td>± .014</td> </tr> <tr> <td>1 PLACE ± 0.13</td> <td>± ---</td> <td>± ---</td> </tr> </table>			mm	INCH	4 PLACES ± ---	± ---	± ---	3 PLACES ± ---	± .010	± .010	2 PLACES ± .25	± .014	± .014	1 PLACE ± 0.13	± ---
		mm	INCH																
	4 PLACES ± ---	± ---	± ---																
3 PLACES ± ---	± .010	± .010																	
2 PLACES ± .25	± .014	± .014																	
1 PLACE ± 0.13	± ---	± ---																	
DESCRIPTION	ANGULAR ±1/2°	DRAWN BY GEP	DATE 10/26/87	TITLE CRIMP TERMINAL, MALE .093/(2.36) DIA. FOR 14 THRU 20 AWG. WIRE															
REV	DRAFT WHERE APPLICABLE MUST REMAIN WITHIN DIMENSIONS	CHECKED BY RW	DATE 10/26/87	MOLEX INCORPORATED															
		APPROVED BY RAS	DATE 10/26/87	DOCUMENT NO. SD-1190-*															
		MATERIAL NO.	SEE CHART	SHEET NO. 1 OF 1															
		SIZE	THIS DRAWING CONTAINS INFORMATION THAT IS PROPRIETARY TO MOLEX INCORPORATED AND SHOULD NOT BE USED WITHOUT WRITTEN PERMISSION																